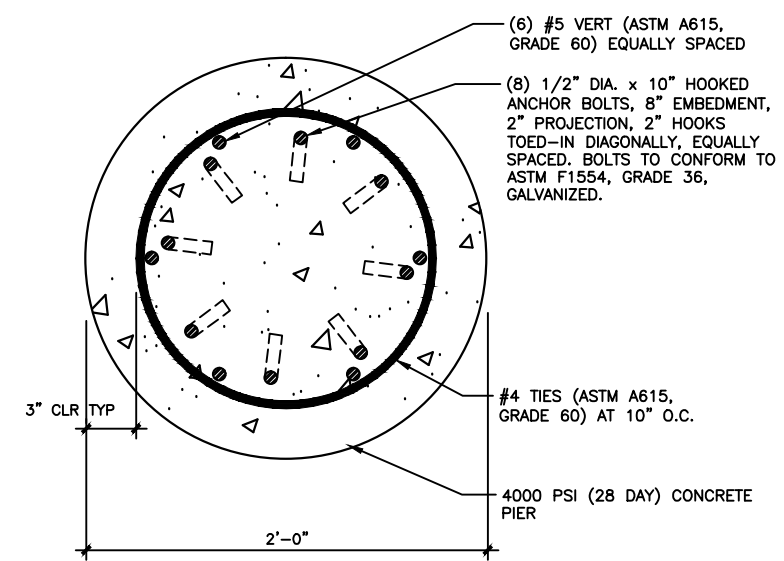


BASE DETAILS
NO SCALE



SECTION A-A
NO SCALE

NOTES TO DESIGNER:
(DO NOT INCLUDE ON CONSTRUCTION DRAWINGS)

- COORDINATE WITH LANL MASTER SPECIFICATION 10 1405.
- THIS MOUNTING DETAIL IS TO BE USED FOR SIGNS PLACED A MINIMUM OF 30 FT FROM EDGE OF HIGHWAY PAVEMENT. SIGNS INSTALLED WITHIN 30 FT SHALL BE DESIGNED W/ BREAKAWAY MOUNTINGS IN ACCORDANCE WITH HIGHWAY CODES AND STANDARDS.
- SIGN TYPES
TYPE A - FACE AREA \leq 24 SF & VERT CENTER OF GRAVITY \leq 3'-6" ABOVE BASE. (EX: FREESTANDING BUILDING SIGN - VARIES DEPENDING ON SIGN TEXT AND LAYOUT).
TYPE B - FACE AREA \leq 42 SF & VERT CENTER OF GRAVITY \leq 5'-6" ABOVE BASE. (EX: FREESTANDING TECHNICAL AREA SIGN - VARIES DEPENDING ON SIGN TEXT AND LAYOUT).
- DRAWING DEVELOPED FOR ML-3/ML-4 PROJECTS. FOR ML-1/ML-2, ADDITIONAL REQUIREMENTS AND QA REVIEWS ARE REQUIRED.
- SUPPORTING CALCULATION = CAL-012-03-1414-0012-S

NO	DATE	CLASS REV	DC	DESCRIPTION	DWN	DSGN	CHKD	SUB	APP
2	11/17/14	UNCL	EJS	CHANGED GRADE 40 REBAR TIES TO GRADE 60 & CLARIFIED INSTALLATIONS NEAR ROADS	SR	SR	ES	DC	TO
1	8/30/12	UNCL	EJS	REVISED FTG DETAILS	SR	SK	RT	DC	TO

ENGINEERING STANDARDS PROGRAM

ENGINEERING STANDARDS MANUAL	DRAWN	R. PEARSON
	DESIGN	S. RICHARDSON
	CHECKED	R. TROUT
	DATE	5-17-04

BLDG X	TA-X	
SUBMITTED	APPROVED FOR RELEASE	
DISCIPLINE POC: SCOTT RICHARDSON	STANDARDS MANAGER: TOBIN ORUCH	
SHEET		9
9		OF 9
CLASSIFICATION: U	REVIEWER: ED SEAWALT	DATE:
PROJECT ID	DRAWING NO	REV
CHAPTER 4	ST-G2040-4	2



PO Box 1663
Los Alamos, New Mexico 87545