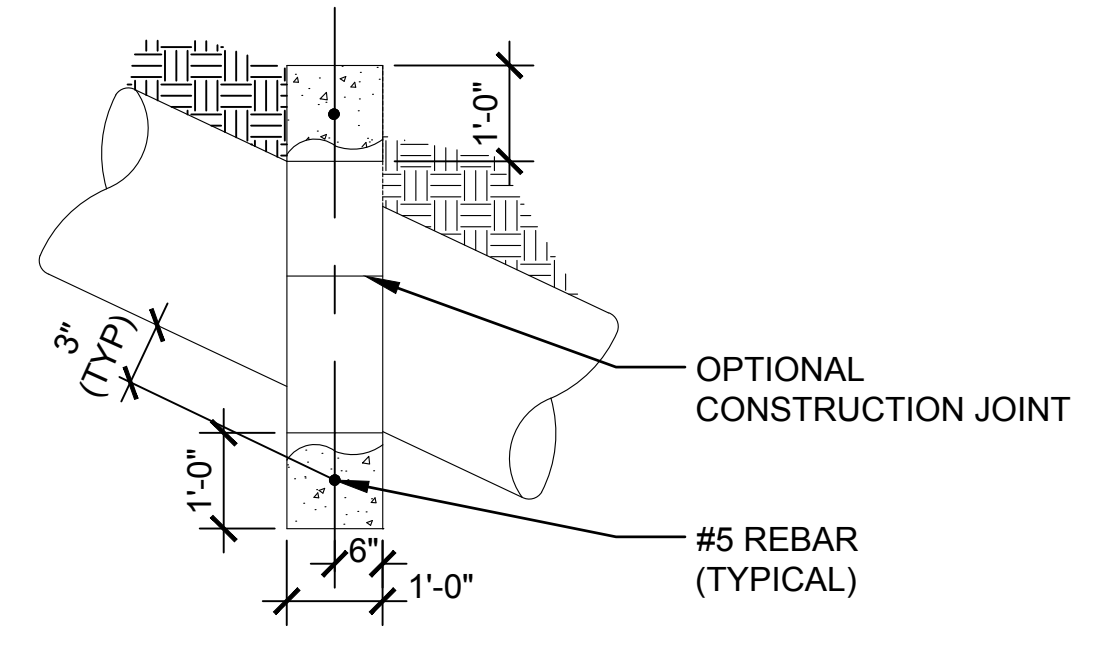
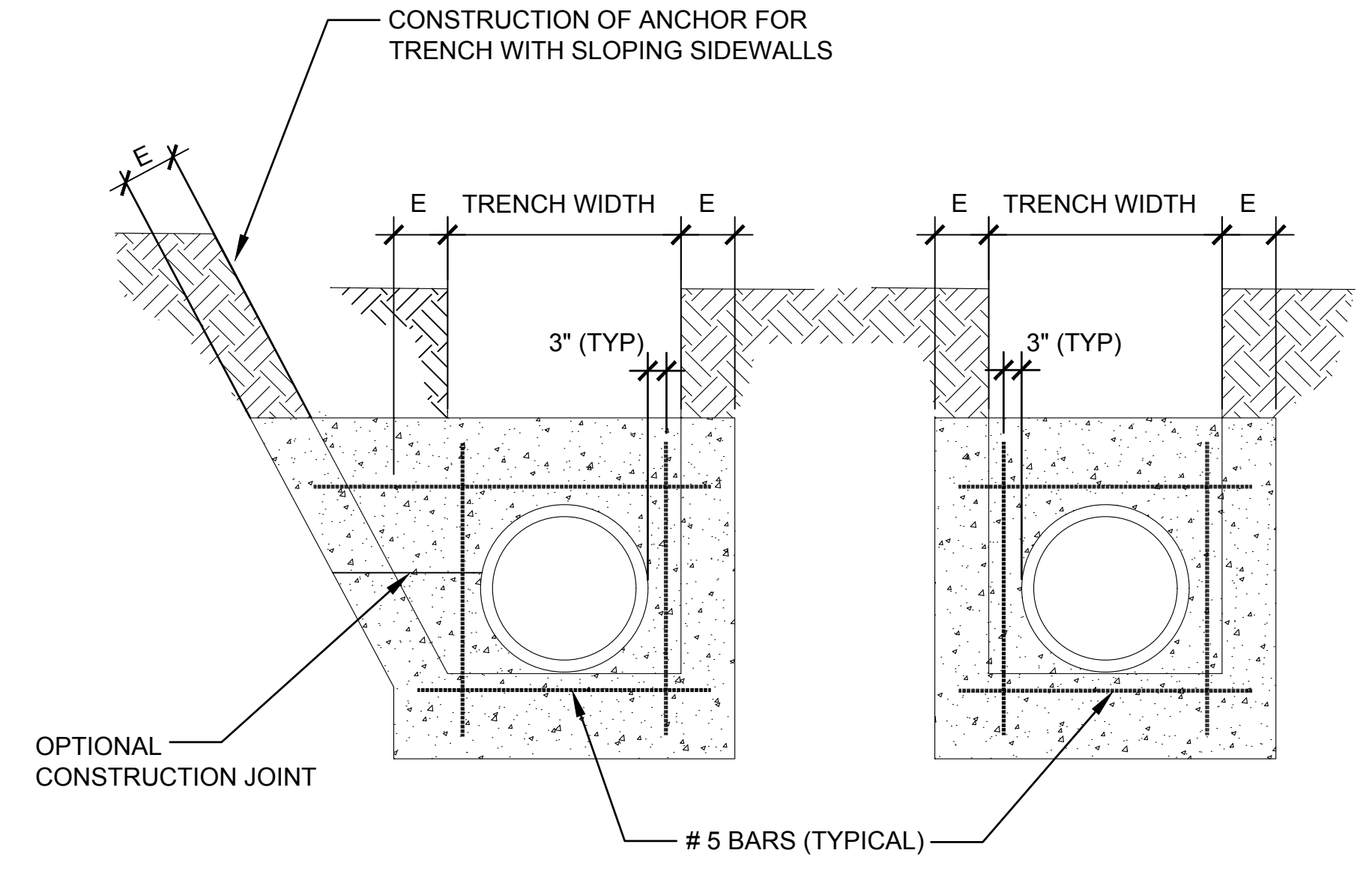


PIPE SLOPE	"X" DISTANCE BETWEEN ANCHORS
1:1 TO 1.5:1	12'
1.5:1 TO 2:1	14'
2:1 TO 2.5:1	16'
2.5:1 TO 3:1	18'
3:1	20'

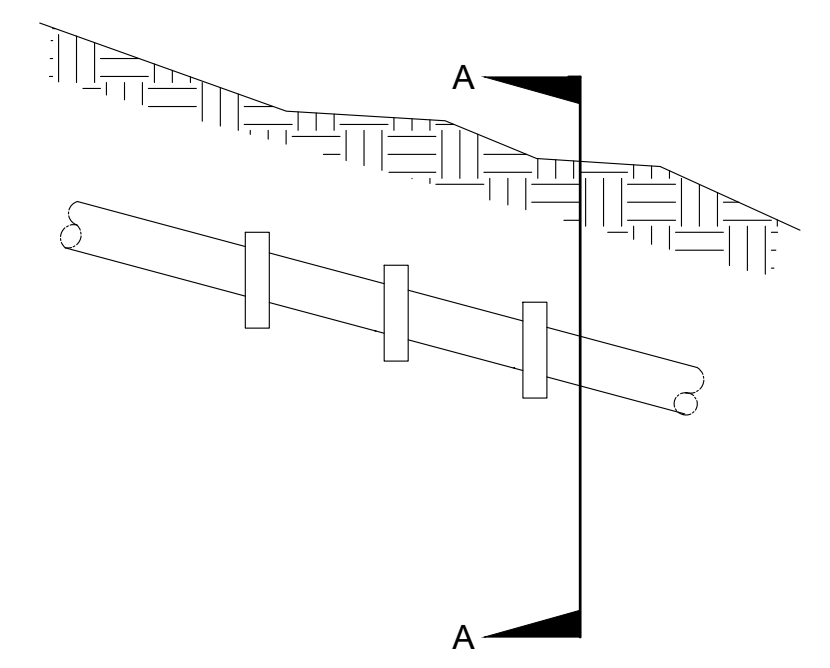
- GENERAL NOTES:**
- IF THIS SHEET IS NOT 24" X 36" USE GRAPHIC SCALE ACCORDINGLY
 - PIPE ANCHORS REQUIRED ON ALL SLOPES OF 3:1 AND STEEPER.
 - "E"=8 INCHES UNLESS OTHERWISE NOTED.
 - CONCRETE f' c = 3000 psi (MINIMUM).
 - PLACE CONCRETE AGAINST UNDISTURBED EARTH, EXCEPT WHERE FORMED; IF FORMS CREATE VOID, BACKFILL TO 90% MAX. DENSITY.
 - BACKFILL TRENCH TO 90% MAX. DENSITY TO PREVENT TRENCH EROSION.



ENLARGED PROFILE



SECTION A-A



PROFILE

DRAWING DEVELOPED FOR ML-3/ML-4 PROJECTS. FOR ML-1/ML-2, ADDITIONAL REQUIREMENTS AND QA REVIEWS ARE REQUIRED. (REMOVE THIS NOTE WHEN INSERTED INTO A DRAWING PACKAGE)

SLOPING PIPE ANCHOR DETAIL
SCALE: NONE

NOTES FOR DESIGNER:

(DO NOT INCLUDE ON CONSTRUCTION DRAWINGS)

- WHEN EDITING DETAIL TO SUIT PROJECT, ADD JOB SPECIFIC REQUIREMENTS AND DELETE ONLY THOSE PORTIONS THAT DO NOT APPLY. TO SEEK A VARIANCE FROM APPLICABLE REQUIREMENTS, CONTACT THE ESM CIVIL POC.

NO	DATE	CLASS REV	DC	DESCRIPTION	DWN	DSGN	CHKD	SUB	APP
4	09/01/2016	UNCLASS	EJS	ADMIN CHANGES TO NEW FORMAT CAD STD REV#5. MINOR DESIGN CHANGES	EJS	MS	MS	CJRR	TO
3	01/28/2014	U		GENERAL REVISION	KT	MS	JG	RT	TO
2	08/09/2006	U	DY	DETAIL CLARIFIED. (EDITORIAL CHANGES)	RP	EH	MS	EH	TO
1	08/23/2002	U		GENERAL REVISION AND DWG. NO. WAS ST3664	RP	EH	MS	EH	TO

ENGINEERING STANDARDS

CIVIL

SLOPING PIPE ANCHOR DETAIL

DRAWN	R. PEARSON
DESIGN	E. HOTH
CHECKED	M. SMITHOUR
DATE	6-28-99

TA- XX BLDG XXXX

SUBMITTED DISCIPLINE POC: EDWARD HOTH APPROVED FOR RELEASE STANDARDS MANAGER: TOBIN ORUCH

SHEET **1**

1 OF **1**

D.C.: UNCLASSIFIED REVIEWER: LARRY BAYS DATE:

PROJECT ID DRAWING NO **CHAPTER 3 ST-G3010-5** REV **4**

00% REVIEW
NOT FOR CONSTRUCTION

D
C
B
A