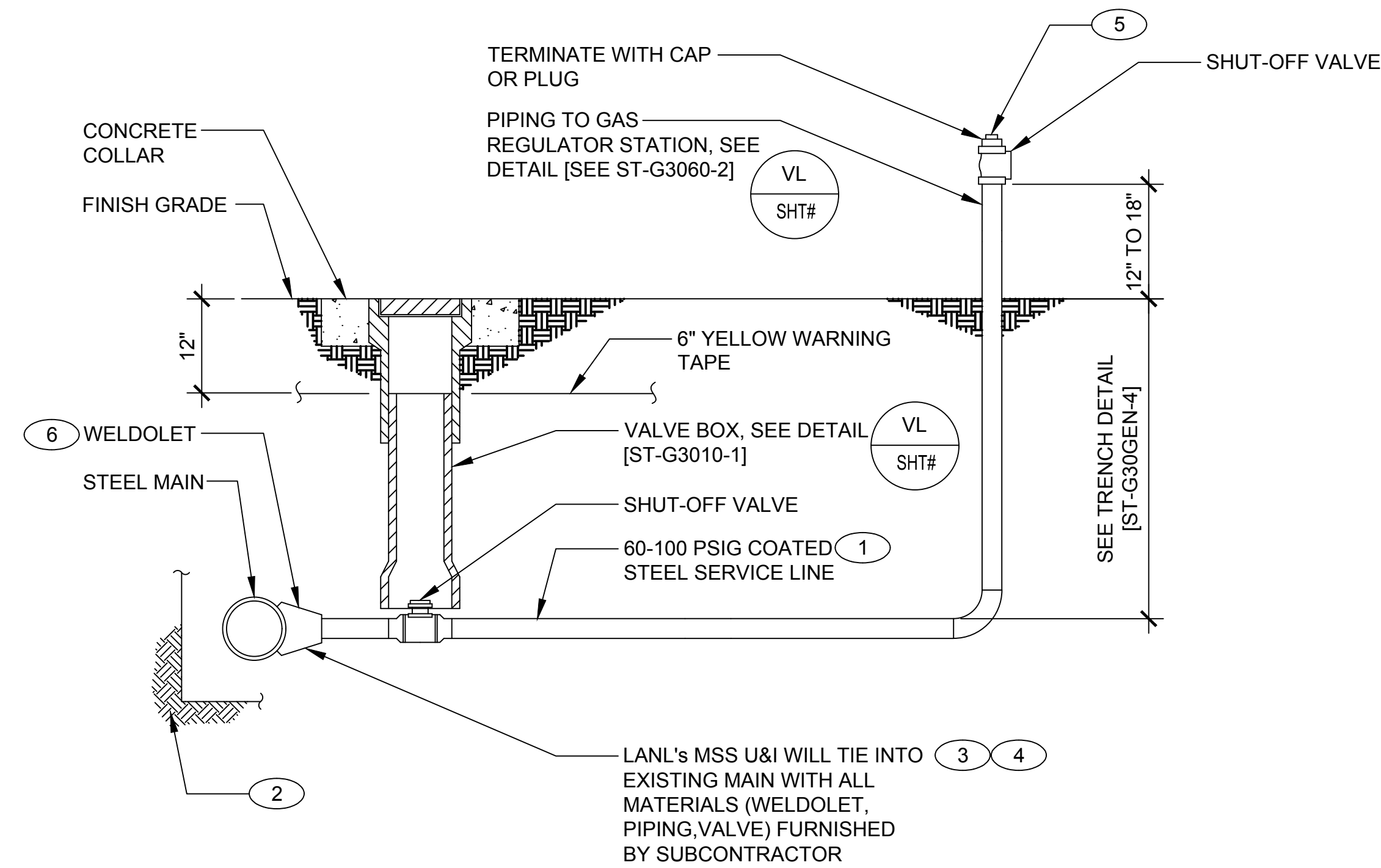


**GENERAL NOTES:**

- IF THIS SHEET IS NOT 24"x36" USE GRAPHIC SCALE ACCORDINGLY.

**KEYED NOTES:**

- RUN NEW SERVICE LINE TO WITHIN 6" OF EXISTING MAIN
- MINIMUM BELL HOLE AT BOTTOM OF TRENCH: 24" FROM CENTERLINE OF NEW PIPE ON EACH SIDE; 18" FROM EDGE ON BACK SIDE; 4'-0" IN FRONT OF MAIN (LENGTH OF BELL HOLE); 18" UNDER MAIN. TAPER OR STEP TRENCH TO MEET OSHA REQUIREMENTS.
- LANL STR WILL ENSURE MATERIALS REQUIRED FOR TIE-IN ARE AT THE JOB SITE. SERVICE LINE HAS BEEN PRESSURE TESTED, AND BELL HOLE IS DUG PRIOR TO NOTIFYING MSS U&I.
- LANL STR WILL NOTIFY MSS U&I 15 DAYS IN ADVANCE TO SCHEDULE TIE-IN.
- LOCATE STUB-OUT FOR GAS REGULATOR 8" TO 12" FROM BUILDING. ENSURE PIPING IS STRAIGHT, LEVEL AND PLUMB WITH BUILDING.
- WHEN TIE-IN PIPING IS EQUAL TO OR EXCEEDS 1/2 OF MAIN DIAMETER, MAKE TIE-IN WITH FULL CIRCLE WELD CLAMP OR BY CUTTING IN A TEE.



DRAWING DEVELOPED FOR ML-3/ML-4 PROJECTS. FOR ML-1/ML-2, ADDITIONAL REQUIREMENTS AND QA REVIEWS ARE REQUIRED. (REMOVE THIS NOTE WHEN INSERTED INTO A DRAWING PACKAGE)

**GAS PIPING TIE-IN DETAIL**  
SCALE: NONE

**NOTES FOR DESIGNER:** (DO NOT INCLUDE ON CONSTRUCTION DRAWINGS)

- PROVIDE 2" MINIMUM STEEL SERVICE LINE.
- CONTACT LANL'S U&I UTILITIES CORROSION SPECIALIST OR LANL U&I UTILITIES GROUP GAS SYSTEM REPRESENTATIVE FOR CATHODIC PROTECTION REQUIREMENTS. ALSO REFER TO THE ESM ELECTRICAL CHAPTER SECTION G4040.
- WHEN EDITING DETAIL TO SUIT PROJECT, ADD JOB SPECIFIC REQUIREMENTS AND DELETE ONLY THOSE PORTIONS THAT DO NOT APPLY. TO SEEK A VARIANCE FROM APPLICABLE REQUIREMENTS, CONTACT THE LANL ESM CIVIL POC.
- REFER TO THE FOLLOWING LANL STANDARDS FOR ADDITIONAL REQUIREMENTS:
  - ENGINEERING MANUAL, CIVIL CHAPTER.
  - SPEC 31 2000, EARTH MOVING.
  - SPEC 33 5100, NATURAL GAS DISTRIBUTION.
- SPECIFY POLYETHYLENE PIPING FOR BRANCH PIPING TO BUILDING. USE OF COATED STEEL PIPING SHALL BE APPROVED BY LANL UTILITIES GROUP GAS REPRESENTATIVE.
- SIZE SERVICE LINES IN ACCORDANCE WITH THE UNIFORM PLUMBING CODE OR UNIFORM MECHANICAL CODE.
- DESIGN DRAWINGS AND SUBMITTALS OF SITE NATURAL GAS PIPING SYSTEM SHALL BE REVIEWED AND APPROVED BY LANL UTILITIES AND INSTITUTIONAL FACILITIES GROUP GAS SYSTEM REPRESENTATIVE.
- DESIGN PIPING CAPACITY FOR 60 PSIG GAS PRESSURE AND 100 PSIG MAXIMUM OPERATION PRESSURE.
- PROVIDE TRACER WIRE IN ACCORDANCE WITH LANL ESM STANDARD DRAWING ST-G30GEN-3. TRACER WIRE DETAIL FOR NON-METALIC PIPE ONLY.

2	09/15/2016	UNCLASS	EJS	ADMIN. CHANGES TO NEW FORMAT CAD STD REV#5 & INCORPORATED DESIGNER NOTES FROM SHEET 4 OF 4.	EJS	MS	MS	CJRR	TO
1	08/23/2002	U		GENERAL REVISION & DWG# WAS ST6510	RP	JG	MS	EH	TO
NO	DATE	CLASS REV	DC	DESCRIPTION	DWN	DSGN	CHKD	SUB	APP

**ENGINEERING STANDARDS**

**CIVIL**

DRAWN	R. PEARSON
DESIGN	J. GONZALES
CHECKED	M. SMITHOUR
DATE	6-28-99

TA- XX BLDG XXXX

SUBMITTED DISCIPLINE POC: E. HOTH APPROVED FOR RELEASE STANDARDS MANAGER: TOBIN ORUCH

**1**

**1** OF **3**

D.C.: U PROJECT ID: CHAPTER 3 REVIEWER: LARRY BAYS DRAWING NO: ST-G3060-1.1 DATE: REV 2

00% REVIEW  
NOT FOR CONSTRUCTION

D  
C  
B  
A