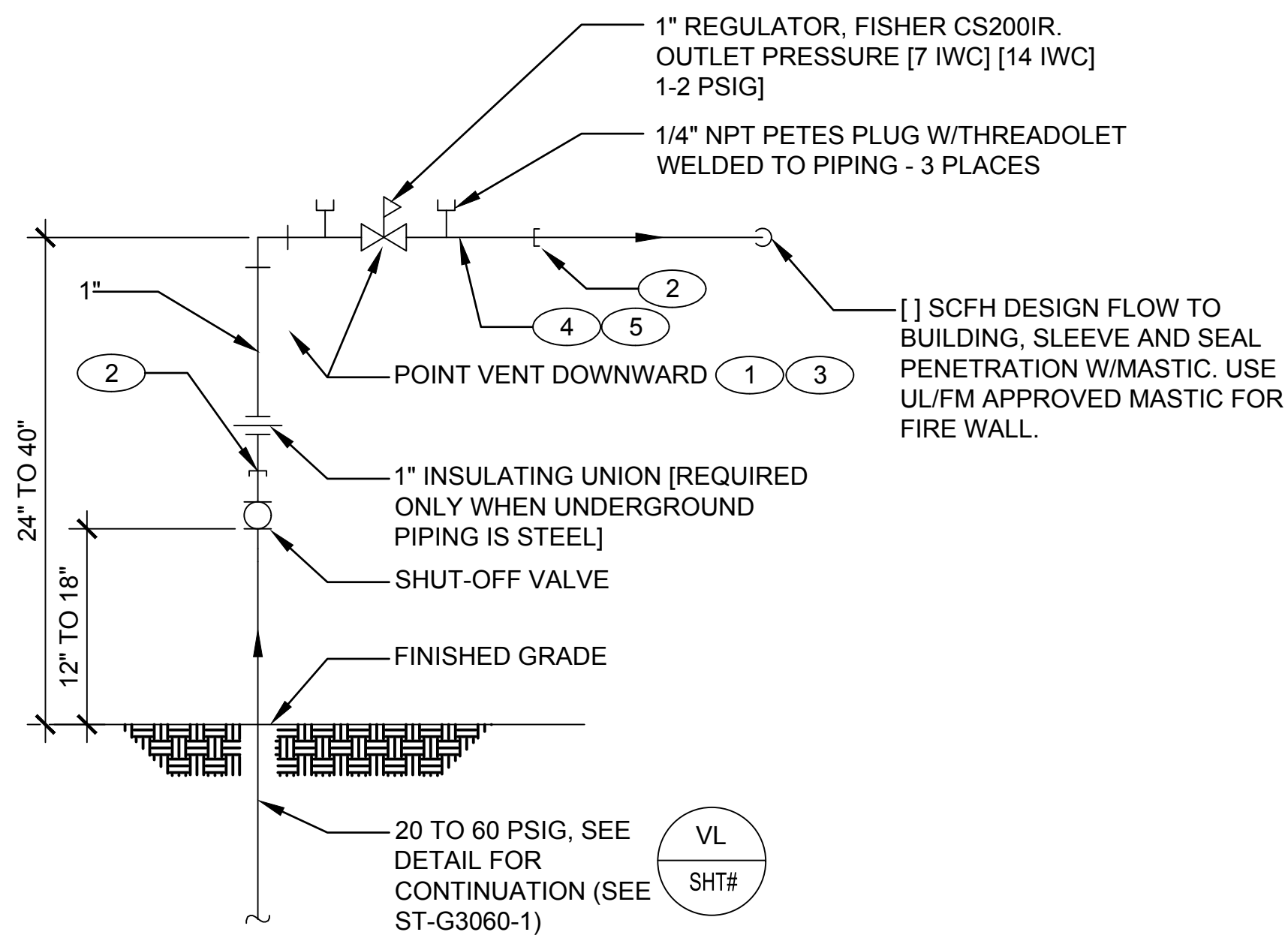


GENERAL NOTES:

- IF THIS SHEET IS NOT 24"x36" USE GRAPHIC SCALE ACCORDINGLY.

KEYED NOTES:

- LANL's MSS U&I WILL INSTALL AND ADJUST PRESSURE OF GAS REGULATORS.
- SUBCONTRACTOR SHALL TERMINATE PIPING WITH A THREADED CAP OR PLUG AND ALLOW SUFFICIENT HORIZONTAL SPACE, 5 TO 10 FEET, BETWEEN TERMINATION POINTS FOR INSTALLATION OF REGULATOR STATION
- LOCATE REGULATORS NOT CLOSER THAN 10 FEET HORIZONTALLY FROM INTAKE AIR DEVICES (LOUVERS, FANS, ETC...)
- BOND ABOVE GROUND PIPING TO ELECTRICAL GROUNDING SYSTEM. BOND TO GAS PIPING AT SUITABLE LOCATION DOWNSTREAM OF LOW PRESSURE REGULATOR AND UPSTREAM OF GAS APPLIANCE SHUT-OFF VALVE. COMPLY WITH NEC
- BOND GAS PIPING LOCATED WITHIN 6 FEET OF A LIGHTNING PROTECTION CONDUCTOR TO THE CONDUCTOR PER NFPA 780. BOND TO GAS PIPING AT SUITABLE EXTERIOR LOCATION DOWN-STREAM OF LOW PRESSURE REGULATOR.



OUTLET PRESSURE	REGULATOR MAX. CAPACITY (SCFH) AT 0.6 S.G.	ORIFICE SIZE	SPRING NUMBER
FISHER REGULATOR CS200IR (CAPACITIES BASED ON 20 PSIG INLET PRESSURE)			
7 IWC	475 1050	1/8 3/16	GE30188X012 (GOLD)
14 IWC	480 1075	1/8 3/16	GE30224X012 (UNPAINTED)
1-2 PSIG	475 1025	1/8 3/16	GE30190X012 (BLACK)

DRAWING DEVELOPED FOR ML-3/ML-4 PROJECTS. FOR ML-1/ML-2, ADDITIONAL REQUIREMENTS AND QA REVIEWS ARE REQUIRED. (REMOVE THIS NOTE WHEN INSERTED INTO A DRAWING PACKAGE)

GAS REGULATOR STATION DETAIL
SCALE: NONE

NOTES FOR DESIGNER: (DO NOT INCLUDE ON CONSTRUCTION DRAWINGS)

- WHEN EDITING DETAIL TO SUIT PROJECT, AND JOB SPECIFIC REQUIREMENTS DELETE ONLY THOSE THAT DO NOT APPLY. TO SEEK A VARIANCE FROM APPLICABLE REQUIREMENTS, CONTACT THE ESM CIVIL POC.
- VERIFY NATURAL GAS INLET PRESSURE AND SIZE REGULATOR ACCORDINGLY
- REFER TO THE FOLLOWING LANL STANDARDS FOR ADDITIONAL REQUIREMENTS:
 - ENGINEERING STANDARDS MANUAL, CIVIL CHAPTER
 - CIVIL DRAWING ST-G30GEN-1, BOLLARD DETAIL
 - MASTER SPECIFICATION 33 5100, NATURAL GAS DISTRIBUTION (SITE).
 - MASTER SPECIFICATION 23 1123, NATURAL GAS PIPING SYSTEMS (BUILDING).
- PROVIDE 4" DIAMETER PIPE BOLLARDS IF VEHICLES ARE LIKELY TO COME IN CONTACT WITH REGULATOR STATION. BOLLARDS FOR PROTECTING GAS SERVICES WILL BE 3'-6" ABOVE AND 2'-6" BELOW GRADE WITH BASE BEING 4" OF CONCRETE ALL AROUND.
- CONTACT LANL UTILITIES AND INSTITUTIONAL FACILITIES FOR SPECIAL DESIGN, AND WHEN EXCEPTIONS TO THESE STANDARDS ARE NECESSARY i.e. LOCATION OF REGULATOR, FLOW CAPACITIES, ETC....
- INSTALL AGA APPROVED APPLIANCE REGULATIONS AT EACH APPLIANCE ON 1 PSIG OR 2 PSIG GAS PIPING SYSTEMS. SEPARATE VENTS TO THE OUTSIDE ARE NOT REQUIRED PROVIDING APPLIANCE REGULATORS HAVE MAXIMUM DISCHARGE RATE THROUGH VENT OF 1.0 CFH AT 2 PSIG. INSTALL REGULATORS IN NON-HAZARDOUS WELL-VENTED INTERIOR LOCATION, READILY ACCESSIBLE FOR SERVICING.
- SIZE SUPPLY PIPING TO BUILDING IN ACCORDANCE WITH THE UNIFORM PLUMBING OR UNIFORM MECHANICAL CODES (IAPMO).
- INSTALL SNOW PROTECTION ABOVE REGULATOR STATION IF STATION IS LOCATED ON SLOPE END OF ROOF.
- DESIGN DRAWINGS AND SUBMITTALS OF SITE NATURAL GAS PIPING SYSTEM SHALL BE REVIEWED AND APPROVED BY A LANL UTILITIES AND INSTITUTIONAL FACILITIES REPRESENTATIVE.

NO	DATE	CLASS REV	DC	DESCRIPTION	DWN	DSGN	CHKD	SUB	APP
4	09/15/2016	UNCLASS		ADMIN. CHANGES TO NEW FORMAT CAD STD REV#5. MINOR DESIGN CHANGES & INCORPORATED NOTES TO DESIGNER FROM SHEET 5 OF 5.	EJS	MS	MS	CJRR	TO
3	01/19/2006	U	DY	REVISED TITLE BLOCK DATA, AND ADTS. ENGINEERING LOGO.	RP	MS	MS	EH	TO
2	09/27/2004	U		FISHER REGULATOR HSR WAS S402 & REVISED TABLE ACCORDINGLY	RP	JG	MS	EH	TO
1	08/23/2002	U		GENERAL REVISION AND DWG. NO. WAS ST6500.	RP	JG	MS	EH	TO

ENGINEERING STANDARDS

CIVIL

**GAS REG. STATION DETAIL
SINGLE STAGE, LOW FLOW**

DRAWN	R. PEARSON
DESIGN	J. GONZALES
CHECKED	M. SMITHOUR
DATE	6-28-99

TA- XX BLDG XXXX

SUBMITTED DISCIPLINE POC: E. HOTH APPROVED FOR RELEASE STANDARDS MANAGER: TOBIN ORUCH

SHEET **3**

3 OF **4**

D.C.: U REVIEWER: LARRY BAYS DATE:

PROJECT ID DRAWING NO DATE: REV

CHAPTER 3 ST-G3060-2.3 4

00% REVIEW
NOT FOR CONSTRUCTION

D
C
B
A