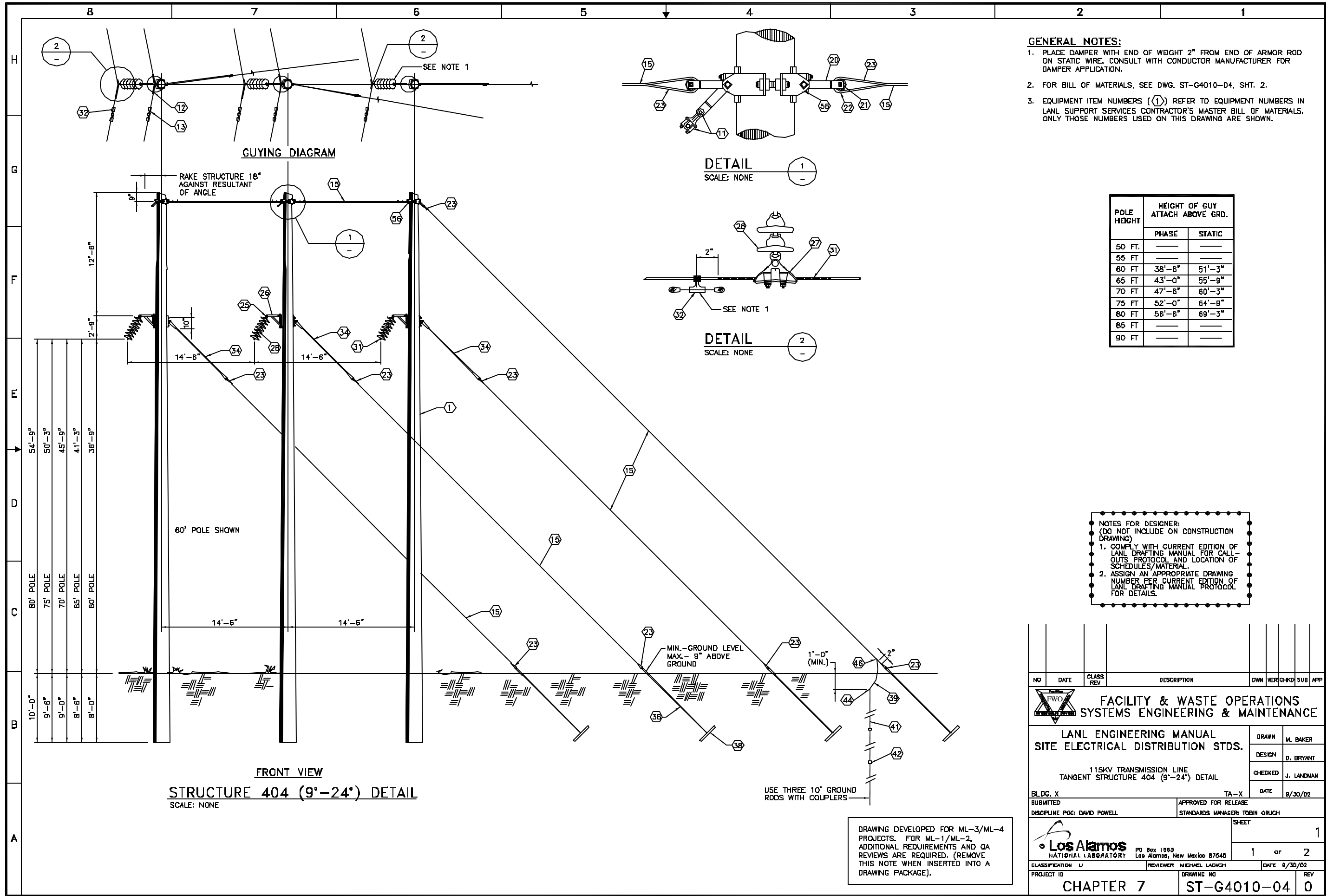


G:\LANL Engineering Standards\Eng. Manual (LEU)\2. Approved\ST-G4010-D4E1.dwg, 10/31/02 08:15 053088





- GENERAL NOTES:**
1. PLACE DAMPER WITH END OF WEIGHT 2" FROM END OF ARMOR ROD ON STATIC WIRE. CONSULT WITH CONDUCTOR MANUFACTURER FOR DAMPER APPLICATION.
  2. FOR BILL OF MATERIALS, SEE DWG. ST-G4010-D4, SHT. 2.
  3. EQUIPMENT ITEM NUMBERS ((1)) REFER TO EQUIPMENT NUMBERS IN LANL SUPPORT SERVICES CONTRACTOR'S MASTER BILL OF MATERIALS. ONLY THOSE NUMBERS USED ON THIS DRAWING ARE SHOWN.

POLE HEIGHT	HEIGHT OF GUY ATTACH ABOVE GRD.	
	PHASE	STATIC
50 FT.	—	—
55 FT.	—	—
60 FT.	38'-6"	51'-3"
65 FT.	43'-0"	55'-9"
70 FT.	47'-6"	60'-3"
75 FT.	52'-0"	64'-9"
80 FT.	56'-6"	69'-3"
85 FT.	—	—
90 FT.	—	—

**NOTES FOR DESIGNER:**  
(DO NOT INCLUDE ON CONSTRUCTION DRAWING)

1. COMPLY WITH CURRENT EDITION OF LANL DRAFTING MANUAL FOR CALL-OUTS PROTOCOL AND LOCATION OF SCHEDULES/MATERIAL.
2. ASSIGN AN APPROPRIATE DRAWING NUMBER PER CURRENT EDITION OF LANL DRAFTING MANUAL PROTOCOL FOR DETAILS.

NO	DATE	CLASS REV	DESCRIPTION	OWN	VER	CHKD	SUB	APP
 <b>FACILITY &amp; WASTE OPERATIONS SYSTEMS ENGINEERING &amp; MAINTENANCE</b>								
<b>LANL ENGINEERING MANUAL SITE ELECTRICAL DISTRIBUTION STDS.</b>				DRAWN		M. BAKER		
115KV TRANSMISSION LINE TANGENT STRUCTURE 404 (9'-24') DETAIL				DESIGN		D. BRYANT		
BLDG. X TA-X				CHECKED		J. LANDMAN		
SUBMITTED				DATE		9/30/02		
DISCIPLINE POCI DAVID POWELL				APPROVED FOR RELEASE		STANDARDS MANAGER TOBIN GRUCH		
 NATIONAL LABORATORY				SHEET		1		
CLASSIFICATION U				REVIEWER		MICHAEL LADACH		
PROJECT ID				DATE		9/30/02		
<b>CHAPTER 7</b>				DRAWING NO		ST-G4010-04		
0				REV		0		

DRAWING DEVELOPED FOR ML-3/ML-4 PROJECTS. FOR ML-1/ML-2, ADDITIONAL REQUIREMENTS AND QA REVIEWS ARE REQUIRED. (REMOVE THIS NOTE WHEN INSERTED INTO A DRAWING PACKAGE).