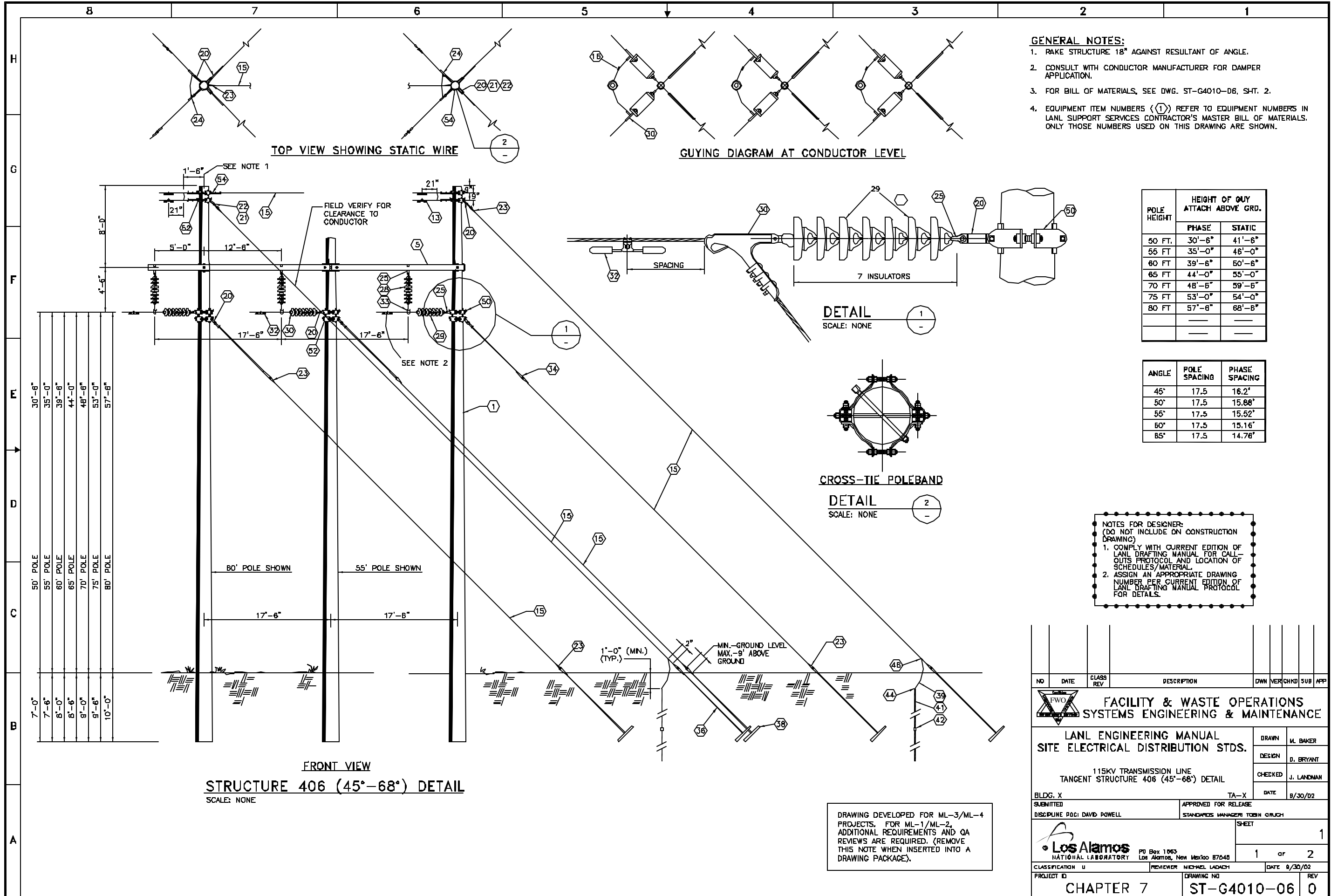


C:\LANL\Engineering\Standards\Eng. Manual (LEU)\2. Approved\ST-G4010-06E1.dwg, 10/31/02, 11:08 083688



- GENERAL NOTES:**
1. MAKE STRUCTURE 18° AGAINST RESULTANT OF ANGLE.
 2. CONSULT WITH CONDUCTOR MANUFACTURER FOR DAMPER APPLICATION.
 3. FOR BILL OF MATERIALS, SEE DWG. ST-G4010-06, SHT. 2.
 4. EQUIPMENT ITEM NUMBERS ((1)) REFER TO EQUIPMENT NUMBERS IN LANL SUPPORT SERVICES CONTRACTOR'S MASTER BILL OF MATERIALS. ONLY THOSE NUMBERS USED ON THIS DRAWING ARE SHOWN.

POLE HEIGHT	HEIGHT OF GUY ATTACH ABOVE GRD.	
	PHASE	STATIC
50 FT.	30'-6"	41'-6"
55 FT.	35'-0"	46'-0"
60 FT.	39'-6"	50'-6"
65 FT.	44'-0"	55'-0"
70 FT.	48'-6"	59'-6"
75 FT.	53'-0"	64'-0"
80 FT.	57'-6"	68'-6"

ANGLE	POLE SPACING	PHASE SPACING
45°	17.5	16.2'
50°	17.5	15.88'
55°	17.5	15.52'
60°	17.5	15.16'
65°	17.5	14.78'

NOTES FOR DESIGNER:
(DO NOT INCLUDE ON CONSTRUCTION DRAWING)

1. COMPLY WITH CURRENT EDITION OF LANL DRAFTING MANUAL FOR CALL-OUTS PROTOCOL AND LOCATION OF SCHEDULES/MATERIAL.
2. ASSIGN AN APPROPRIATE DRAWING NUMBER PER CURRENT EDITION OF LANL DRAFTING MANUAL PROTOCOL FOR DETAILS.

NO.	DATE	CLASS REV	DESCRIPTION	OWN	VER	CHKD	SUB	APP		
FACILITY & WASTE OPERATIONS SYSTEMS ENGINEERING & MAINTENANCE										
LANL ENGINEERING MANUAL SITE ELECTRICAL DISTRIBUTION STDS.								DRAWN	M. BAKER	
115KV TRANSMISSION LINE TANGENT STRUCTURE 406 (45°-68°) DETAIL								DESIGN	D. BRYANT	
BLDG. X TA-X								CHECKED	J. LANDMAN	
SUBMITTED APPROVED FOR RELEASE								DATE	9/30/02	
DISCIPLINE POCI DAVID POWELL STANDARDS MANAGER TOMMY GRUCH								SHEET	1	
								1	or	2
CLASSIFICATION U REVIEWER MICHAEL LADACH DATE 8/30/02								DRAWING NO	CHAPTER 7	
PROJECT ID								REV	ST-G4010-06 0	

DRAWING DEVELOPED FOR ML-3/ML-4 PROJECTS. FOR ML-1/ML-2, ADDITIONAL REQUIREMENTS AND QA REVIEWS ARE REQUIRED. (REMOVE THIS NOTE WHEN INSERTED INTO A DRAWING PACKAGE).