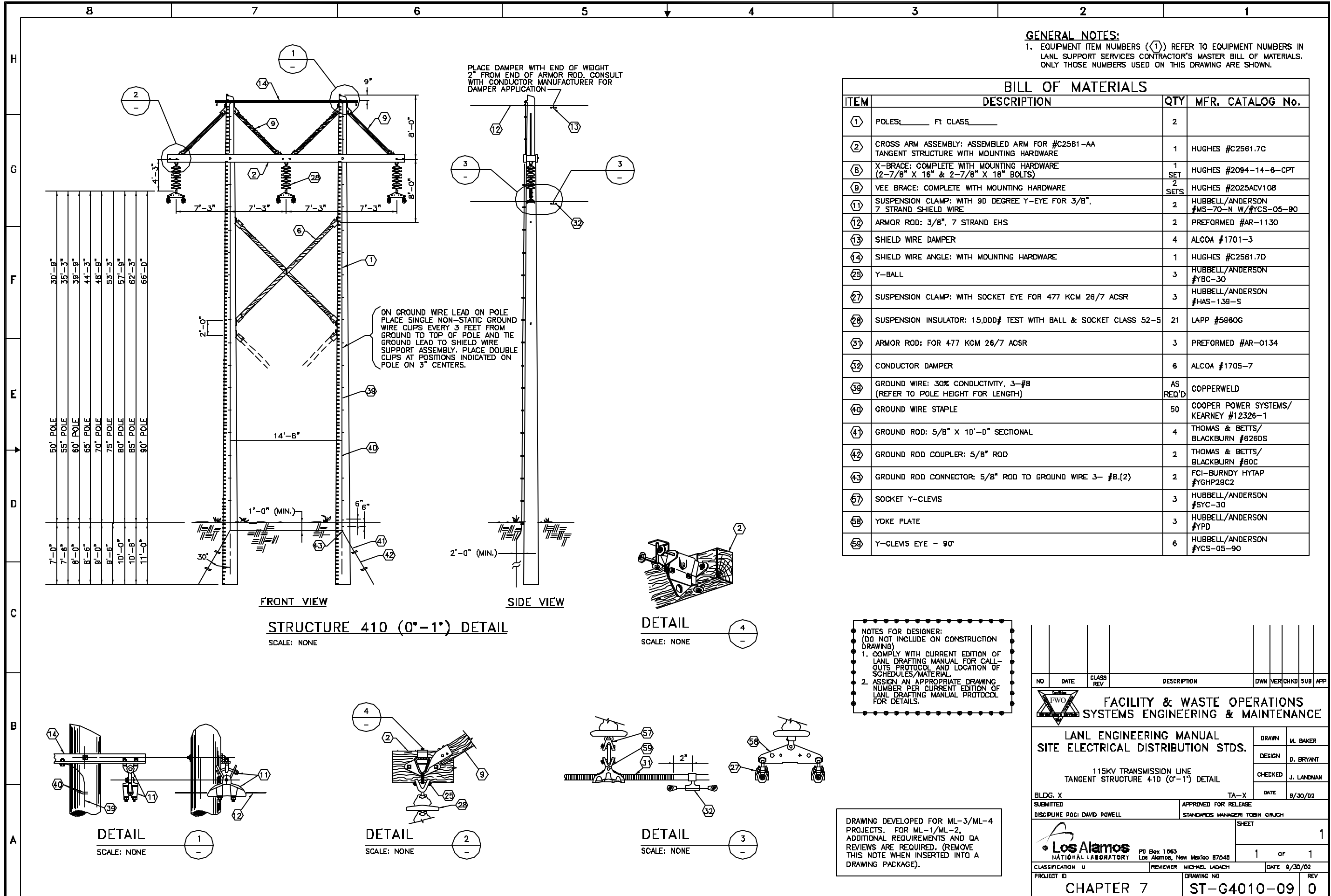


C:\LANL\Engineering\Standards\Eng. Manual (LEU)\2. Approved\ST-G4010-09\ST-G4010-09.dwg, 10/31/02, 11:42, 093508B



**GENERAL NOTES:**  
 1. EQUIPMENT ITEM NUMBERS (Ⓛ) REFER TO EQUIPMENT NUMBERS IN LANL SUPPORT SERVICES CONTRACTOR'S MASTER BILL OF MATERIALS. ONLY THOSE NUMBERS USED ON THIS DRAWING ARE SHOWN.

ITEM	DESCRIPTION	QTY	MFR. CATALOG No.
Ⓛ	POLES: _____ FT CLASS _____	2	
Ⓜ	CROSS ARM ASSEMBLY: ASSEMBLED ARM FOR #C2561-AA TANGENT STRUCTURE WITH MOUNTING HARDWARE	1	HUGHES #C2561.7C
Ⓝ	X-BRACE: COMPLETE WITH MOUNTING HARDWARE (2-7/8" X 16" & 2-7/8" X 18" BOLTS)	1 SET	HUGHES #2094-14-6-CPT
Ⓞ	VEE BRACE: COMPLETE WITH MOUNTING HARDWARE	2 SETS	HUGHES #2025ACV108
Ⓟ	SUSPENSION CLAMP: WITH 90 DEGREE Y-EYE FOR 3/8", 7 STRAND SHIELD WIRE	2	HUBBELL/ANDERSON #MS-70-N W/YCS-05-90
Ⓠ	ARMOR ROD: 3/8", 7 STRAND EHS	2	PREFORMED #AR-1130
Ⓡ	SHIELD WIRE DAMPER	4	ALCOA #1701-3
Ⓢ	SHIELD WIRE ANGLE: WITH MOUNTING HARDWARE	1	HUGHES #C2561.7D
Ⓣ	Y-BALL	3	HUBBELL/ANDERSON #YBC-30
Ⓤ	SUSPENSION CLAMP: WITH SOCKET EYE FOR 477 KCM 26/7 ACSR	3	HUBBELL/ANDERSON #HAS-139-S
Ⓥ	SUSPENSION INSULATOR: 15,DDD# TEST WITH BALL & SOCKET CLASS 52-5	21	LAPP #59606
Ⓦ	ARMOR ROD: FOR 477 KCM 26/7 ACSR	3	PREFORMED #AR-0134
Ⓧ	CONDUCTOR DAMPER	6	ALCOA #1705-7
Ⓨ	GROUND WIRE: 30% CONDUCTIVITY, 3-#8 (REFER TO POLE HEIGHT FOR LENGTH)	AS REQ'D	COPPERWELD
Ⓩ	GROUND WIRE STAPLE	50	COOPER POWER SYSTEMS/KEARNEY #12326-1
Ⓛ	GROUND ROD: 5/8" X 10'-0" SECTIONAL	4	THOMAS & BETTS/BLACKBURN #B26DS
Ⓜ	GROUND ROD COUPLER: 5/8" ROD	2	THOMAS & BETTS/BLACKBURN #B0C
Ⓝ	GROUND ROD CONNECTOR: 5/8" ROD TO GROUND WIRE 3- #8.(2)	2	FCI-BURNDY HYTAP #YGHP28C2
Ⓞ	SOCKET Y-CLEVIS	3	HUBBELL/ANDERSON #SYC-30
Ⓟ	YOKE PLATE	3	HUBBELL/ANDERSON #YPD
Ⓠ	Y-CLEVIS EYE - 90°	6	HUBBELL/ANDERSON #YCS-05-90

**NOTES FOR DESIGNER:**  
 (DO NOT INCLUDE ON CONSTRUCTION DRAWING)  
 1. COMPLY WITH CURRENT EDITION OF LANL DRAFTING MANUAL FOR CALL-OUTS PROTOCOL AND LOCATION OF SCHEDULES/MATERIAL.  
 2. ASSIGN AN APPROPRIATE DRAWING NUMBER PER CURRENT EDITION OF LANL DRAFTING MANUAL PROTOCOL FOR DETAILS.

NO	DATE	CLASS REV	DESCRIPTION	OWN	VER	CHKD	SUB	APP	
<b>FACILITY &amp; WASTE OPERATIONS SYSTEMS ENGINEERING &amp; MAINTENANCE</b>									
<b>LANL ENGINEERING MANUAL            SITE ELECTRICAL DISTRIBUTION STDS.</b>								DRAWN	M. BAKER
115KV TRANSMISSION LINE TANGENT STRUCTURE 410 (0'-1') DETAIL								DESIGN	D. BRYANT
BLDG. X TA-X SUBMITTED APPROVED FOR RELEASE DISCIPLINE POCI DAVID POWELL STANDARDS MANAGER TOMM GRUCH								CHECKED	J. LANDMAN
								DATE	8/30/02
CLASSIFICATION U REVIEWER MICHAEL LAMACH DATE 8/30/02 PROJECT ID DRAWING NO								SHEET	1
<b>CHAPTER 7</b>								1	of 1
<b>ST-G4010-09</b>								REV	0

DRAWING DEVELOPED FOR ML-3/ML-4 PROJECTS. FOR ML-1/ML-2, ADDITIONAL REQUIREMENTS AND QA REVIEWS ARE REQUIRED. (REMOVE THIS NOTE WHEN INSERTED INTO A DRAWING PACKAGE).