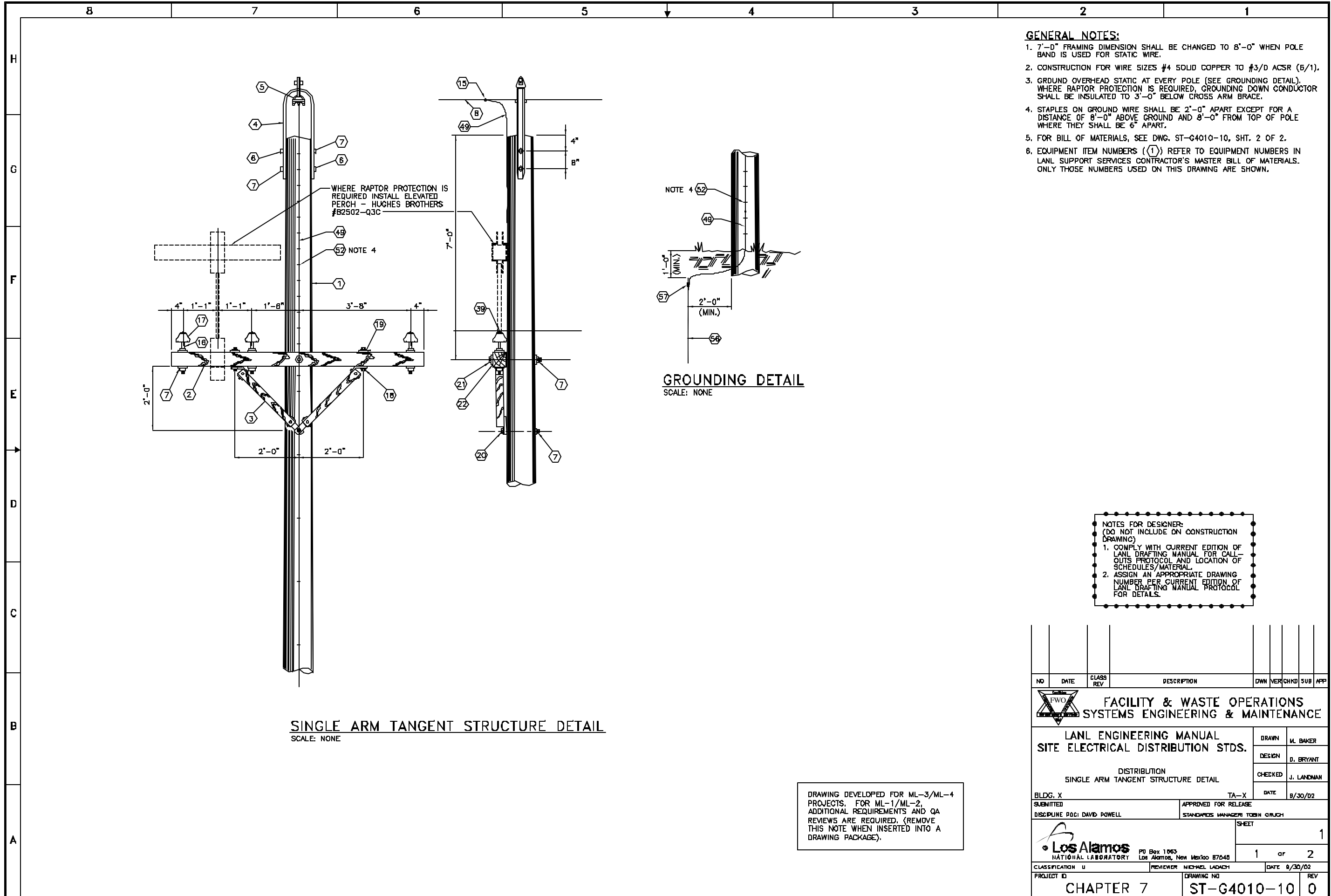


C:\LANL\Engineering\Blamere\Eng. Manual [LEU]\2. Approved\ST-G4010-10E1.dwg, 10/31/02, 11:48 003308B



- GENERAL NOTES:**
- 7'-0" FRAMING DIMENSION SHALL BE CHANGED TO 8'-0" WHEN POLE BAND IS USED FOR STATIC WIRE.
  - CONSTRUCTION FOR WIRE SIZES #4 SOLID COPPER TO #3/D ACSR (5/1).
  - GROUND OVERHEAD STATIC AT EVERY POLE (SEE GROUNDING DETAIL). WHERE RAPTOR PROTECTION IS REQUIRED, GROUNDING DOWN CONDUCTOR SHALL BE INSULATED TO 3'-0" BELOW CROSS ARM BRACE.
  - STAPLES ON GROUND WIRE SHALL BE 2'-0" APART EXCEPT FOR A DISTANCE OF 8'-0" ABOVE GROUND AND 8'-0" FROM TOP OF POLE WHERE THEY SHALL BE 6" APART.
  - FOR BILL OF MATERIALS, SEE DWG. ST-G4010-10, SH. 2 OF 2.
  - EQUIPMENT ITEM NUMBERS ((1)) REFER TO EQUIPMENT NUMBERS IN LANL SUPPORT SERVICES CONTRACTOR'S MASTER BILL OF MATERIALS. ONLY THOSE NUMBERS USED ON THIS DRAWING ARE SHOWN.

**NOTES FOR DESIGNER:**  
(DO NOT INCLUDE ON CONSTRUCTION DRAWING)

- COMPLY WITH CURRENT EDITION OF LANL DRAFTING MANUAL FOR CALL-OUTS PROTOCOL AND LOCATION OF SCHEDULES/MATERIAL.
- ASSIGN AN APPROPRIATE DRAWING NUMBER PER CURRENT EDITION OF LANL DRAFTING MANUAL PROTOCOL FOR DETAILS.

**SINGLE ARM TANGENT STRUCTURE DETAIL**  
SCALE: NONE

DRAWING DEVELOPED FOR ML-3/ML-4 PROJECTS. FOR ML-1/ML-2, ADDITIONAL REQUIREMENTS AND QA REVIEWS ARE REQUIRED. (REMOVE THIS NOTE WHEN INSERTED INTO A DRAWING PACKAGE).

NO	DATE	CLASS REV	DESCRIPTION	OWN	VER	CHKD	SUB	APP	
<b>FACILITY &amp; WASTE OPERATIONS SYSTEMS ENGINEERING &amp; MAINTENANCE</b>									
<b>LANL ENGINEERING MANUAL SITE ELECTRICAL DISTRIBUTION STDS.</b>				DRAWN	M. BAKER				
DISTRIBUTION SINGLE ARM TANGENT STRUCTURE DETAIL				DESIGN	D. BRYANT				
BLDG. X TA-X				CHECKED	J. LANDMAN				
SUBMITTED				DATE	9/30/02				
DISCIPLINE POCI DAVID POWELL				APPROVED FOR RELEASE	STANDARDS MANAGER TOMMY GRUCH				
				SHEET	1				
CLASSIFICATION U				REVIEWER	MICHAEL LADACH		DATE	8/30/02	
PROJECT ID				DRAWING NO	CHAPTER 7		REV	ST-G4010-10 0	