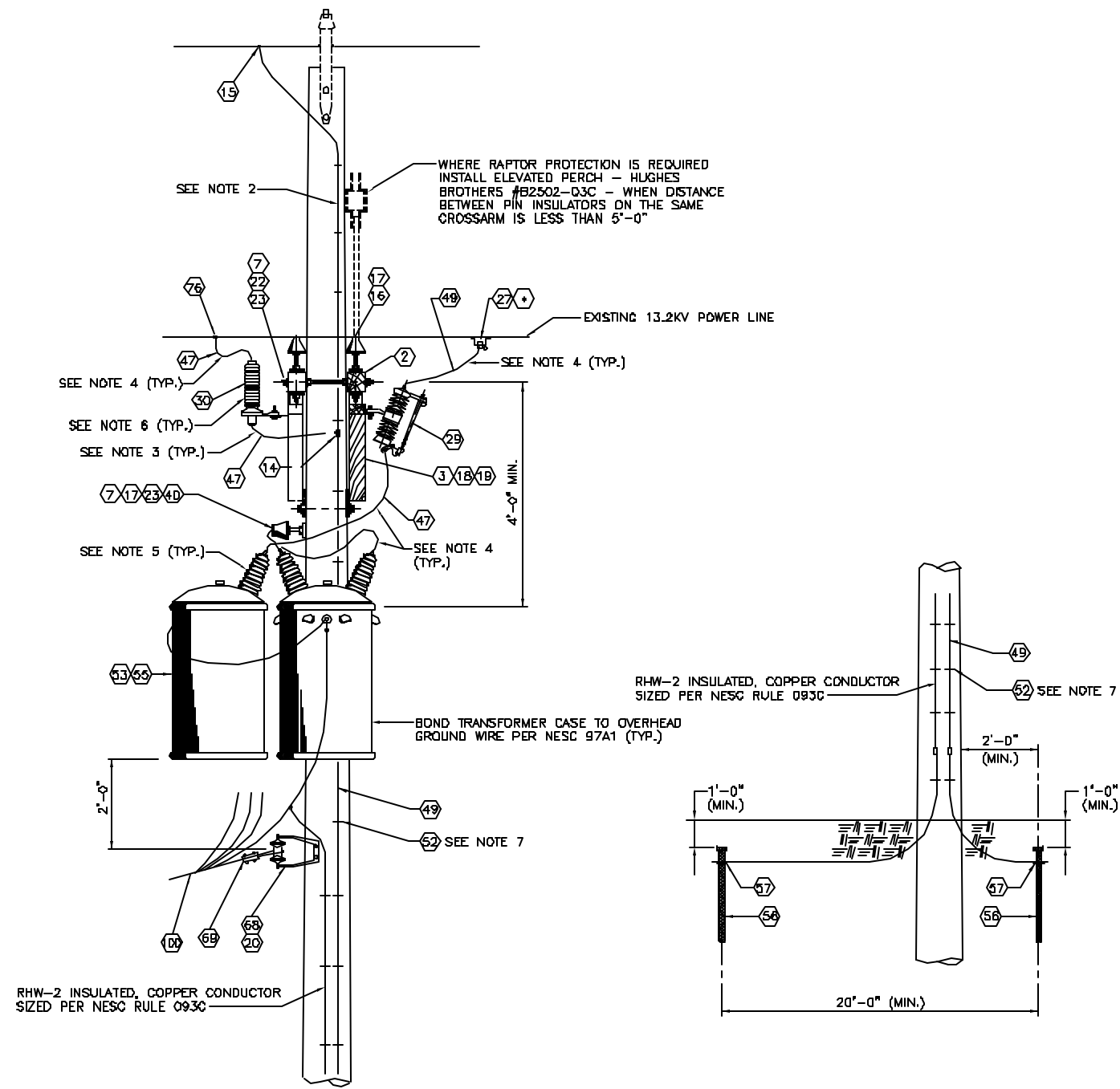


C:\LANL\Engineering\Batteries\Eng. Manual [LEU]\2. Approved\ST-G4010-20E1.dwg, 11/04/02, 14:20 083508





NEW 3-PHASE TRANSFORMER BANK ON EXISTING POLE DETAIL
SCALE: NONE

- GENERAL NOTES:**
1. CONSTRUCTION FOR WIRE SIZES #4 SOLID COPPER TO #3/0 ACSR (6/1).
 2. GROUND OVERHEAD STATIC AT EVERY POLE (SEE GROUNDING DETAIL). WHERE RAPTOR PROTECTION IS REQUIRED, GROUNDING DOWN CONDUCTOR SHALL BE INSULATED TO 3'-0" BELOW CROSS ARM BRACE.
 3. WHERE WILDLIFE/RAPTOR PROTECTION IS REQUIRED USE 800V. INSULATED WIRE.
 4. WHERE WILDLIFE/RAPTOR PROTECTION IS REQUIRED USE NON-SHIELDED 15KV INSULATED CABLE FOR CONNECTIONS TO TRANSFORMER PRIMARY BUSHINGS.
 5. WHERE WILDLIFE/RAPTOR PROTECTION IS REQUIRED PROVIDE BUSHING COVERS SIMILAR TO PREFORMED LINE PRODUCTS #WP-10T.
 6. WHERE WILDLIFE/RAPTOR PROTECTION IS REQUIRED USE HUBBELL/OHIO BRASS #7325 MOUNTING BRACKET WITH PROTECTIVE CAPS IN LIEU OF #7224 MOUNTING BRACKET.
 7. STAPLES ON GROUND WIRE SHALL BE 2'-0" APART EXCEPT FOR A DISTANCE OF 8'-0" ABOVE GROUND AND 8'-0" FROM TOP OF POLE WHERE THEY SHALL BE 8" APART.
 8. FOR BILL OF MATERIALS, SEE DWG. ST-G4010-20, SHT. 2 OF 2.
 9. EQUIPMENT ITEM NUMBERS ((1)) REFER TO EQUIPMENT NUMBERS IN LANL SUPPORT SERVICES CONTRACTOR'S MASTER BILL OF MATERIALS. ONLY THOSE NUMBERS USED ON THIS DRAWING ARE SHOWN.

NOTES FOR DESIGNER:
(DO NOT INCLUDE ON CONSTRUCTION DRAWING)

1. COMPLY WITH CURRENT EDITION OF LANL DRAFTING MANUAL FOR CALL-OUTS PROTOCOL AND LOCATION OF SCHEDULES/MATERIAL.
2. ASSIGN AN APPROPRIATE DRAWING NUMBER PER CURRENT EDITION OF LANL DRAFTING MANUAL PROTOCOL FOR DETAILS.

DRAWING DEVELOPED FOR ML-3/ML-4 PROJECTS. FOR ML-1/ML-2, ADDITIONAL REQUIREMENTS AND QA REVIEWS ARE REQUIRED. (REMOVE THIS NOTE WHEN INSERTED INTO A DRAWING PACKAGE).

NO	DATE	CLASS	DESCRIPTION	OWN	VER	CHKD	SUB	APP	
 FACILITY & WASTE OPERATIONS SYSTEMS ENGINEERING & MAINTENANCE									
LANL ENGINEERING MANUAL SITE ELECTRICAL DISTRIBUTION STDS.				DRAWN	M. BAKER				
DISTRIBUTION - NEW 3 PHASE TRANSFORMER BANK ON EXISTING POLE DETAIL				DESIGN	D. BRYANT				
				CHECKED	J. LANDMAN				
				DATE	9/30/02				
BLDG. X				TA-X					
SUBMITTED				APPROVED FOR RELEASE					
DISCIPLINE POCI DAVID POWELL				STANDARDS MANAGER TOMMY GRUCH					
				SHEET					
				1					
CLASSIFICATION U				REVIEWER	MICHAEL LADACH		DATE	8/30/02	
PROJECT ID				DRAWING NO		REV			
CHAPTER 7				ST-G4010-20		0			