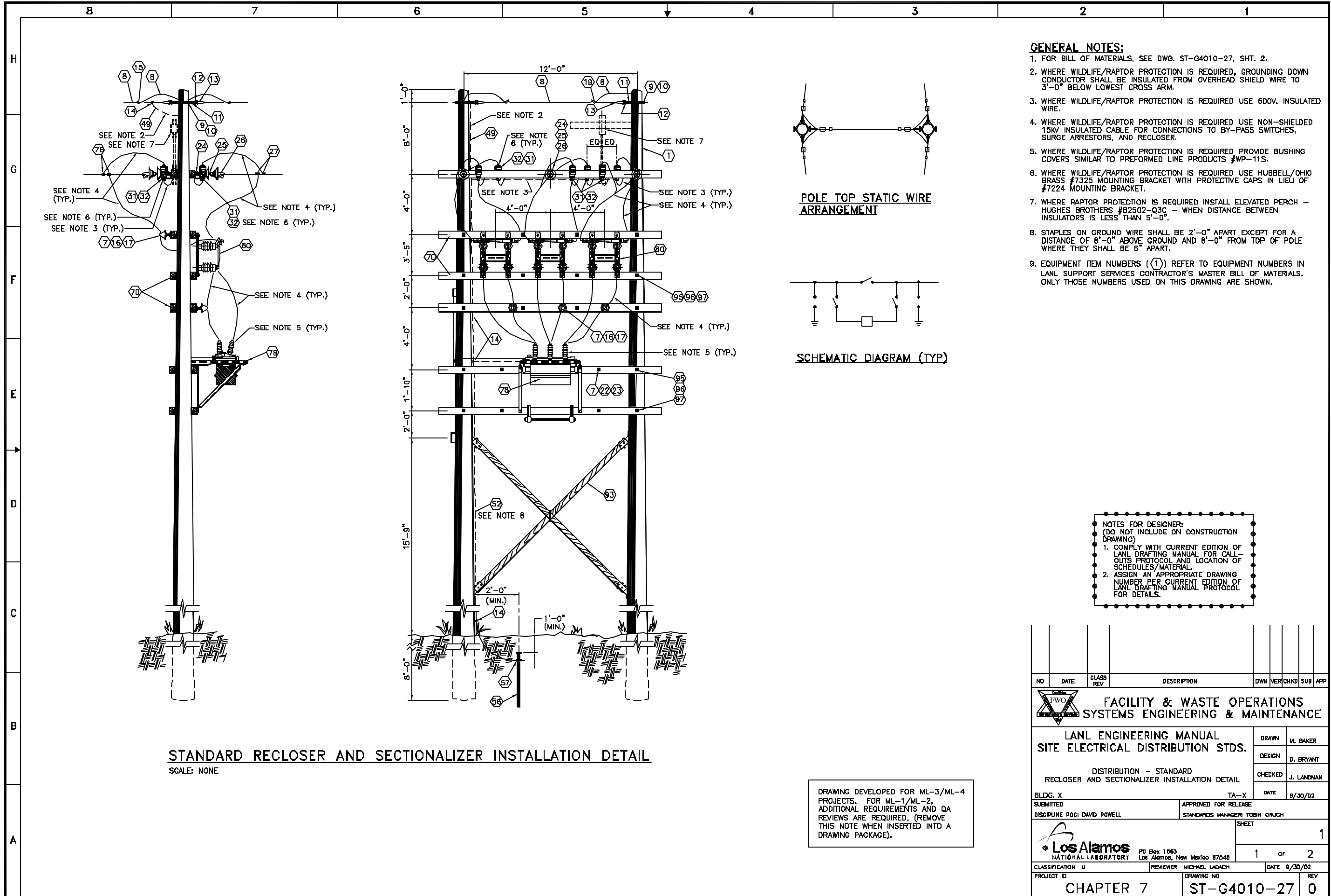


C:\LANL\Engineering\Blamere\Eng. Manual [LEU]2. Approved\ST-G4010-27E1.dwg, 11/04/02 14:53 083588



STANDARD RECLOSER AND SECTIONALIZER INSTALLATION DETAIL
SCALE: NONE

- GENERAL NOTES:**
- FOR BILL OF MATERIALS, SEE DWG. ST-G4010-27, SHT. 2.
 - WHERE WILDLIFE/RAPTOR PROTECTION IS REQUIRED, GROUNDING DOWN CONDUCTOR SHALL BE INSULATED FROM OVERHEAD SHIELD WIRE TO 3'-0" BELOW LOWEST CROSS ARM.
 - WHERE WILDLIFE/RAPTOR PROTECTION IS REQUIRED USE 600V. INSULATED WIRE.
 - WHERE WILDLIFE/RAPTOR PROTECTION IS REQUIRED USE NON-SHIELDED 15KV INSULATED CABLE FOR CONNECTIONS TO BY-PASS SWITCHES, SURGE ARRESTORS, AND RECLOSER.
 - WHERE WILDLIFE/RAPTOR PROTECTION IS REQUIRED PROVIDE BUSHING COVERS SIMILAR TO PREFORMED LINE PRODUCTS #WP-11S.
 - WHERE WILDLIFE/RAPTOR PROTECTION IS REQUIRED USE HUBBELL/OHIO BRASS #7325 MOUNTING BRACKET WITH PROTECTIVE CAPS IN LIEU OF #7224 MOUNTING BRACKET.
 - WHERE RAPTOR PROTECTION IS REQUIRED INSTALL ELEVATED PERCH - HUGHES BROTHERS #B2502-Q3C - WHEN DISTANCE BETWEEN INSULATORS IS LESS THAN 5'-0".
 - STAPLES ON GROUND WIRE SHALL BE 2'-0" APART EXCEPT FOR A DISTANCE OF 8'-0" ABOVE GROUND AND 8'-0" FROM TOP OF POLE WHERE THEY SHALL BE 6" APART.
 - EQUIPMENT ITEM NUMBERS (1) REFER TO EQUIPMENT NUMBERS IN LANL SUPPORT SERVICES CONTRACTOR'S MASTER BILL OF MATERIALS. ONLY THOSE NUMBERS USED ON THIS DRAWING ARE SHOWN.

NOTES FOR DESIGNER:
(DO NOT INCLUDE ON CONSTRUCTION DRAWING)

- COMPLY WITH CURRENT EDITION OF LANL DRAFTING MANUAL FOR CALL-OUTS PROTOCOL AND LOCATION OF SCHEDULES/MATERIAL.
- ASSIGN AN APPROPRIATE DRAWING NUMBER PER CURRENT EDITION OF LANL DRAFTING MANUAL PROTOCOL FOR DETAILS.

DRAWING DEVELOPED FOR ML-3/ML-4 PROJECTS. FOR ML-1/ML-2, ADDITIONAL REQUIREMENTS AND QA REVIEWS ARE REQUIRED. (REMOVE THIS NOTE WHEN INSERTED INTO A DRAWING PACKAGE).

NO	DATE	CLASS REV	DESCRIPTION	OWN	VER	CHKD	SUB	APP
LANL ENGINEERING MANUAL SITE ELECTRICAL DISTRIBUTION STDS.				DRAWN M. BAKER				
DISTRIBUTION - STANDARD RECLOSER AND SECTIONALIZER INSTALLATION DETAIL				DESIGN D. BRYANT				
				CHECKED J. LANDMAN				
				DATE 8/30/02				
BLDG. X SUBMITTED				TA-X APPROVED FOR RELEASE STANDARDS MANAGER TOSH GRUCH				
DISCIPLINE POCI DAVID POWELL				SHEET 1				
CLASSIFICATION U PROJECT ID				REVIEWER MICHAEL LADACH		DATE 8/30/02		REV
CHAPTER 7				ST-G4010-27		0		