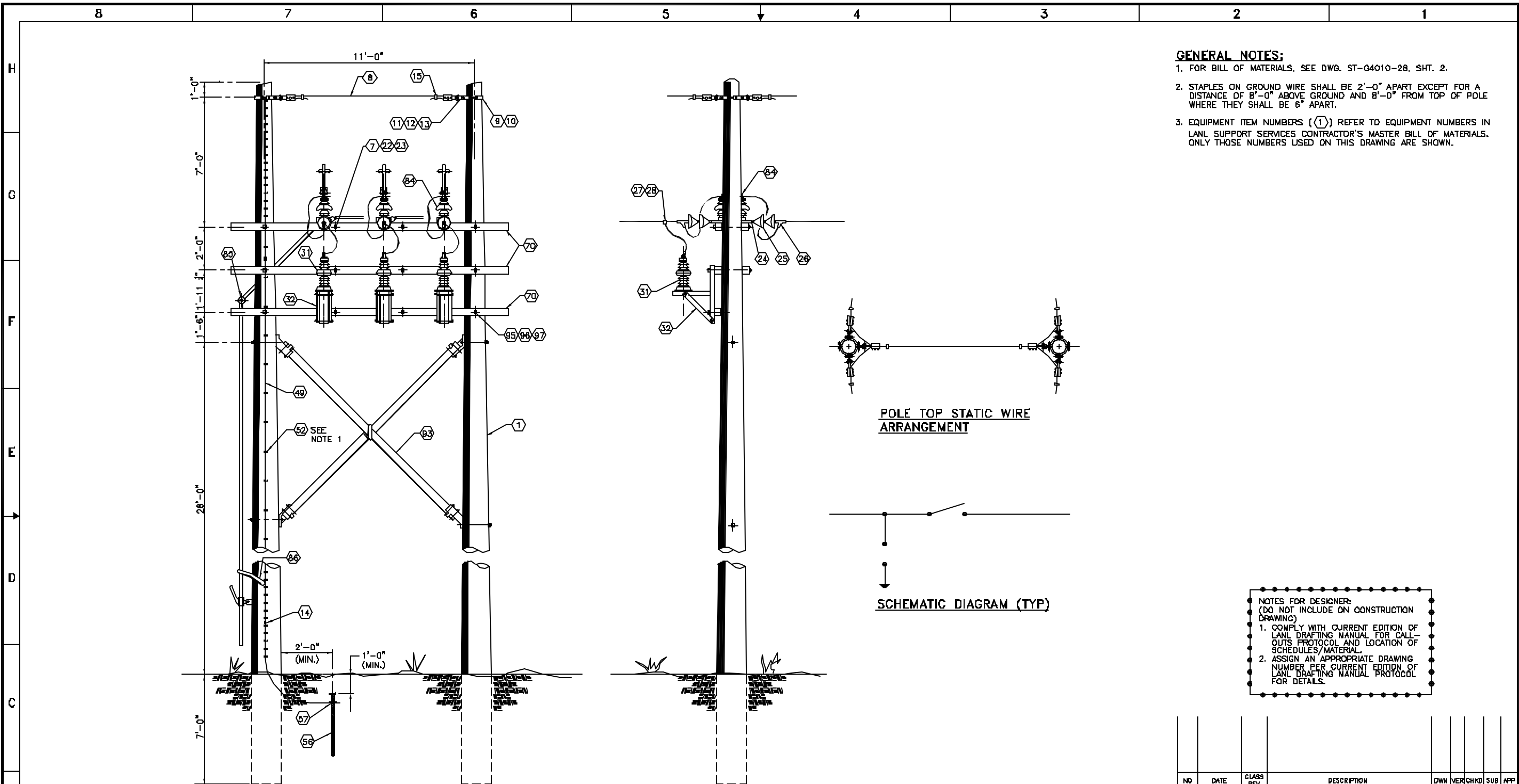


C:\LANL Engineering Standards\Eng. Manual [LB]\2. Approved\ST-G4010-28E1.dwg, 11/04/02 16:22 033948





- GENERAL NOTES:**
1. FOR BILL OF MATERIALS, SEE DWG. ST-G4010-28, SHT. 2.
  2. STAPLES ON GROUND WIRE SHALL BE 2'-0" APART EXCEPT FOR A DISTANCE OF 8'-0" ABOVE GROUND AND 8'-0" FROM TOP OF POLE WHERE THEY SHALL BE 6" APART.
  3. EQUIPMENT ITEM NUMBERS (Ⓛ) REFER TO EQUIPMENT NUMBERS IN LANL SUPPORT SERVICES CONTRACTOR'S MASTER BILL OF MATERIALS. ONLY THOSE NUMBERS USED ON THIS DRAWING ARE SHOWN.

**STANDARD 2-POLE GANG SWITCH INSTALLATION DETAIL**  
SCALE: NONE

DRAWING DEVELOPED FOR ML-3/ML-4 PROJECTS. FOR ML-1/ML-2, ADDITIONAL REQUIREMENTS AND QA REVIEWS ARE REQUIRED. (REMOVE THIS NOTE WHEN INSERTED INTO A DRAWING PACKAGE).

**NOTES FOR DESIGNER:**  
(DO NOT INCLUDE ON CONSTRUCTION DRAWING)

1. COMPLY WITH CURRENT EDITION OF LANL DRAFTING MANUAL FOR CALL-OUTS PROTOCOL AND LOCATION OF SCHEDULES/MATERIAL.
2. ASSIGN AN APPROPRIATE DRAWING NUMBER PER CURRENT EDITION OF LANL DRAFTING MANUAL PROTOCOL FOR DETAILS.

NO	DATE	CLASS	DESCRIPTION	OWN	VER	CHKD	SUB	APP	
 <b>FACILITY &amp; WASTE OPERATIONS SYSTEMS ENGINEERING &amp; MAINTENANCE</b>									
LANL ENGINEERING MANUAL SITE ELECTRICAL DISTRIBUTION STDS.				DRAWN	M. BAKER				
DISTRIBUTION STANDARD 2-POLE GANG SWITCH INSTALLATION DETAIL				DESIGN	D. BRYANT				
BLDG. X				CHECKED	J. LANDMAN				
SUBMITTED				DATE	9/30/02				
DISCIPLINE POCI DAVID POWELL				APPROVED FOR RELEASE	STANDARDS MANAGER TOMMY GRUCH				
				SHEET		1			
CLASSIFICATION U				REVIEWER	MICHAEL LADACH		DATE	8/30/02	
PROJECT ID				DRAWING NO		REV			
CHAPTER 7				ST-G4010-28		0			