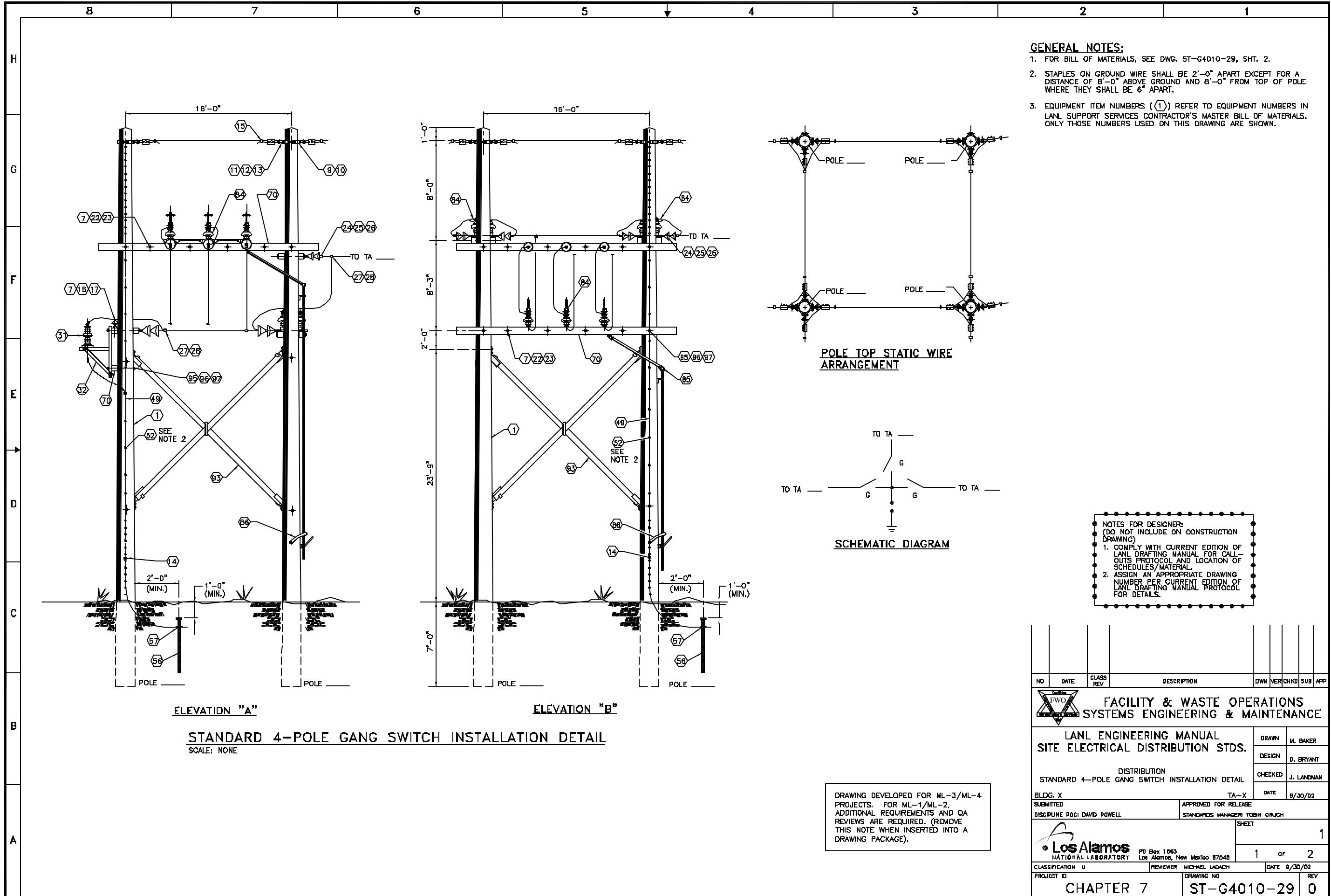
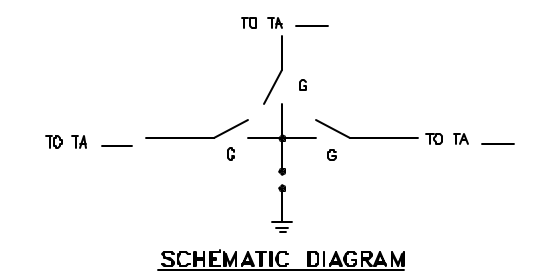
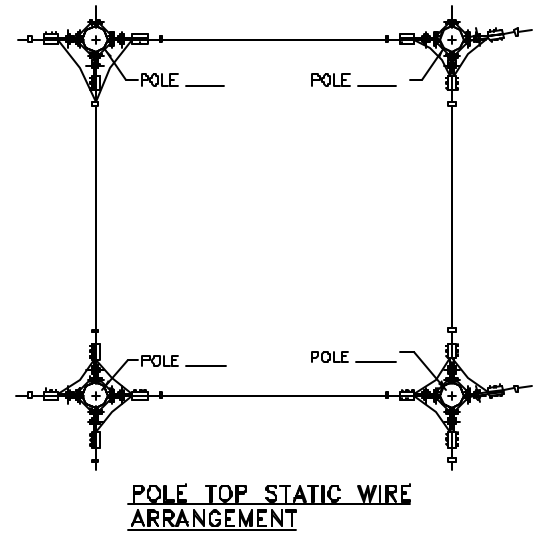


C:\LANL\Engineering\Standards\Eng. Manual [LEU]\2. Approved\ST-G4010-29E1.dwg, 11/04/02 ■ 1627 063608





- GENERAL NOTES:**
- FOR BILL OF MATERIALS, SEE DWG. ST-G4010-29, SHT. 2.
 - STAPLES ON GROUND WIRE SHALL BE 2'-0" APART EXCEPT FOR A DISTANCE OF 8'-0" ABOVE GROUND AND 8'-0" FROM TOP OF POLE WHERE THEY SHALL BE 6" APART.
 - EQUIPMENT ITEM NUMBERS (①) REFER TO EQUIPMENT NUMBERS IN LANL SUPPORT SERVICES CONTRACTOR'S MASTER BILL OF MATERIALS. ONLY THOSE NUMBERS USED ON THIS DRAWING ARE SHOWN.



NOTES FOR DESIGNER:
(DO NOT INCLUDE ON CONSTRUCTION DRAWING)

- COMPLY WITH CURRENT EDITION OF LANL DRAFTING MANUAL FOR CALL-OUTS PROTOCOL AND LOCATION OF SCHEDULES/MATERIAL.
- ASSIGN AN APPROPRIATE DRAWING NUMBER PER CURRENT EDITION OF LANL DRAFTING MANUAL PROTOCOL FOR DETAILS.

NO	DATE	CLASS	DESCRIPTION	OWN	VER	CHKD	SUB	APP
 FACILITY & WASTE OPERATIONS SYSTEMS ENGINEERING & MAINTENANCE								
LANL ENGINEERING MANUAL SITE ELECTRICAL DISTRIBUTION STDS.							DRAWN	M. BAKER
DISTRIBUTION STANDARD 4-POLE GANG SWITCH INSTALLATION DETAIL							DESIGN	D. BRYANT
BLDG. X							CHECKED	J. LANDMAN
SUBMITTED							DATE	8/30/02
DISCIPLINE POCI DAVID POWELL							APPROVED FOR RELEASE	STANDARDS MANAGER TOSH GRUCH
							SHEET	1
CLASSIFICATION U							REVIEWER	MICHAEL LADACH
PROJECT ID							DATE	8/30/02
CHAPTER 7							DRAWING NO	ST-G4010-29
							REV	0

DRAWING DEVELOPED FOR ML-3/ML-4 PROJECTS. FOR ML-1/ML-2, ADDITIONAL REQUIREMENTS AND QA REVIEWS ARE REQUIRED. (REMOVE THIS NOTE WHEN INSERTED INTO A DRAWING PACKAGE).