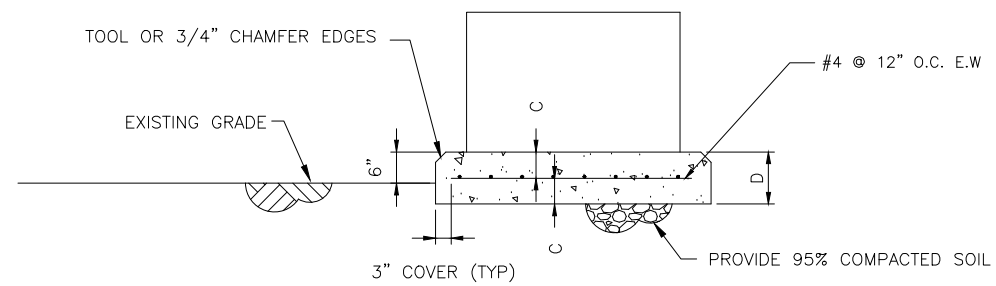
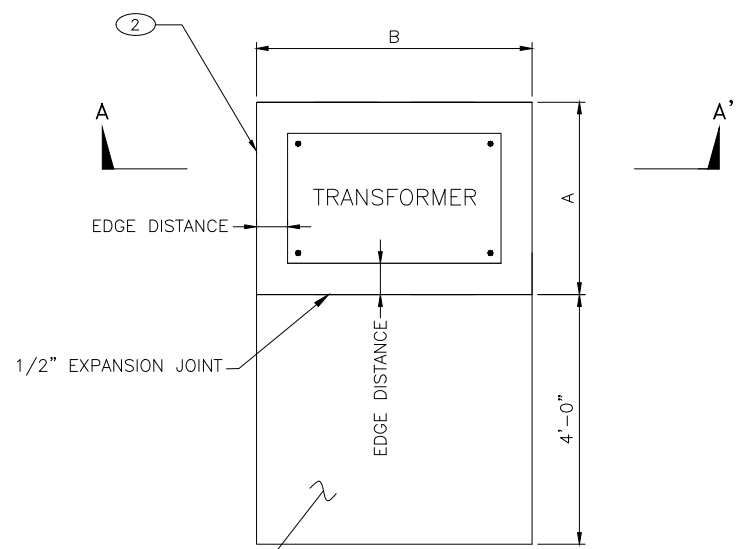


GENERAL NOTES:
 1. COORDINATE CONDUIT STUB-UP LOCATION W/ SUB CONTRACTOR IN AREAS WHERE REINFORCEMENT INTERFERES WITH CONDUIT STUB-UPS, REINFORCING STEEL MAY BE MOVED UP TO 3" IN EITHER DIRECTION.



SECTION A-A'
SCALE: NONE



PLAN VIEW
SCALE: NONE

**PAD DETAIL**
SHT#

KEYED NOTES
 ① PROVIDE 4" THICK CONCRETE APRON WITH W4.5 X 6" REINFORCEMENT.
 ② REFER TO TABLE A FOR PAD DIMENSIONS A AND B FROM PLAN VIEW

② **TABLE A**

3-PHASE TRANSFORMER WEIGHT (LBS)	PAD DIMENSIONS				MINIMUM EDGE DISTANCE TO BOLT
	A	B	C	D	
<900	3'-0"	3'-6"	4"	8"	6"
>900 - <1600	3'-6"	4'-6"	4"	8"	6"
>1600 - <3700	4'-6"	5'-6"	4"	8"	6"

NOTES FOR DESIGNER:
 (DO NOT INCLUDE ON CONSTRUCTION DRAWING)
 1. EDIT TO BE PROJECT SPECIFIC - DELETE TABLE A, SHOW DIMENSIONS
 2. COMPLY WITH CURRENT EDITION OF LANL DRAFTING MANUAL FOR CALL-OUTS PROTOCOL AND LOCATION OF SCHEDULES/MATERIAL.
 3. ASSIGN AN APPROPRIATE DRAWING NUMBER PER CURRENT EDITION OF LANL DRAFTING MANUAL PROTOCOL FOR DETAILS.

DRAWING DEVELOPED FOR ML-4, PC-1, OR PC-2 PROJECTS. FOR ML-1/ML-2/ML-3, ADDITIONAL REQUIREMENTS AND QA REVIEWS ARE REQUIRED. (REMOVE THIS NOTE WHEN INSERTED INTO A DRAWING PACKAGE).

NO	DATE	CLASS REV	ADC	DESCRIPTION	DWN	DSGN	CHKD	SUB	APP
ENGINEERING SERVICES									
LANL ENGINEERING MANUAL SITE ELECTRICAL DISTRIBUTION STDS. LOW VOLTAGE DRY TYPE THREE PHASE TRANSFORMER EQUIPMENT PAD DIMENSIONS								DRAWN J. CARDON DESIGN J. CARDON CHECKED S. KOTHARI DATE 11/1/2012	
BLDG X				TA-X					
PROJECT ENGINEER DISCIPLINE POC: DUANE NIZIO				APPROVED FOR RELEASE STANDARDS MANAGER: TOBIN ORUCH					
Los Alamos NATIONAL LABORATORY PO Box 1663 Los Alamos, New Mexico 87545								SHEET S-XXXX	
CLASSIFICATION: UNCLASSIFIED								DATE: 11/1/2012	
PROJECT ID CHAPTER 7				DRAWING NO G-4010-40				REV 0	

H
G
F
E
D
C
B
A