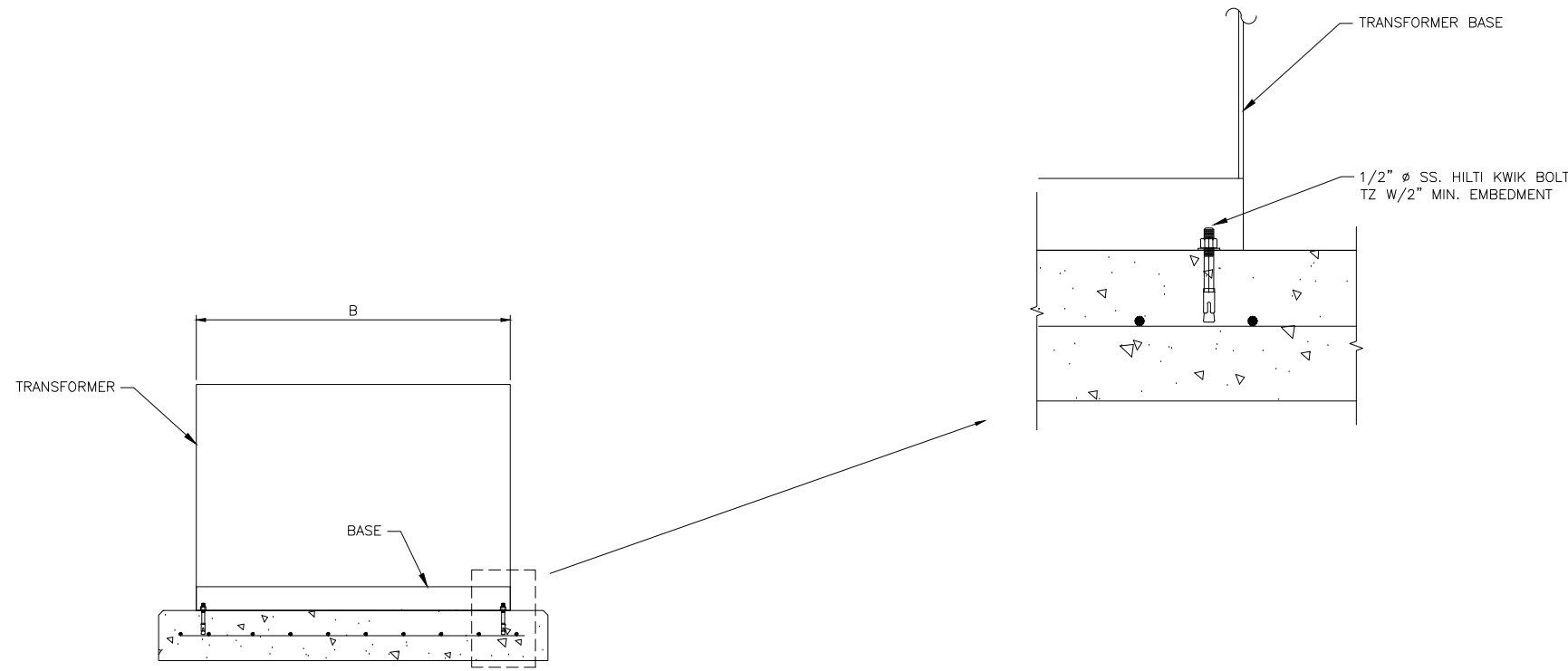


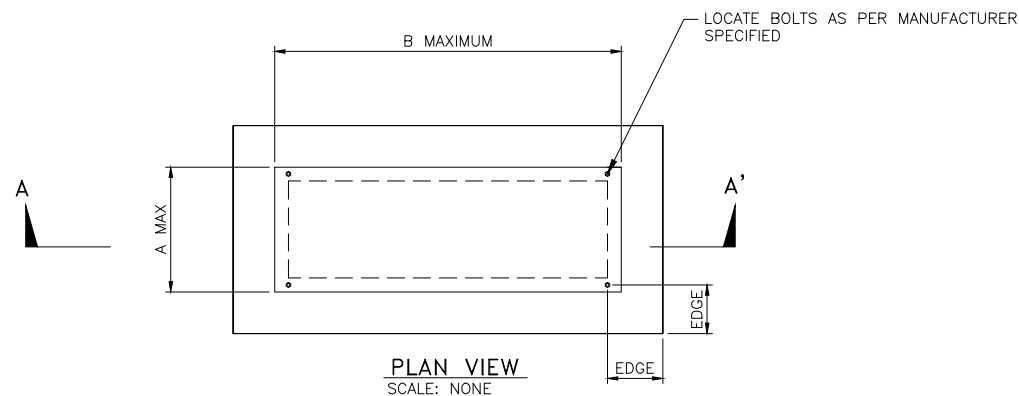
8 7 6 5 4 3 2 1

- GENERAL NOTES:**
1. MINIMUM CONCRETE COVER OVER REINFORCING STEEL 2" UNLESS OTHERWISE NOTED.
  2. FOR PAD DIMENSIONS REFERENCE SHEET 1.
  3. SUBCONTRACTOR TO LOCATE EXISTING REINFORCING PRIOR TO INSTALLATION OF EXPANSION ANCHORS. DO NOT DAMAGE EXISTING REBAR.



**SECTION A-A'**  
SCALE: NONE

- NOTES FOR DESIGNER:**  
(DO NOT INCLUDE ON CONSTRUCTION DRAWING)
1. EDIT TO BE PROJECT SPECIFIC - DELETE TABLE B, SHOW DIMENSIONS
  2. FOR TRANSFORMERS LESS THAN 900LBS, DELETE CONCRETE TURN DOWN.
  3. COMPLY WITH CURRENT EDITION OF LANL DRAFTING MANUAL FOR CALL-OUTS PROTOCOL AND LOCATION OF SCHEDULES/MATERIAL.
  4. ASSIGN AN APPROPRIATE DRAWING NUMBER PER CURRENT EDITION OF LANL DRAFTING MANUAL PROTOCOL FOR DETAILS.



**PLAN VIEW**  
SCALE: NONE

# ANCHORAGE DETAILS  
SHT#

**TABLE B**

LOW VOLTAGE TRANSFORMER (DRY TYPE)					
WEIGHT (LB.)	A MAX.(IN.)	B MAX. (IN.)	H MAX. (IN.)	#BOLTS	MIN EDGE DISTANCE (IN.)
<900	24	30	38	4	6
>900-1,600	32	41	50	4	6
>1,600-3,700	41	56	74	4	6

CENTER OF GRAVITY (CG)  
LOCATION: H/2 OR LOWER

DRAWING DEVELOPED FOR ML-4, PC-1 OR PC-2 PROJECTS. FOR ML-1/ML-2/ML-3, ADDITIONAL REQUIREMENTS AND QA REVIEWS ARE REQUIRED. (REMOVE THIS NOTE WHEN INSERTED INTO A DRAWING PACKAGE).

NO	DATE	CLASS REV	ADC	DESCRIPTION	DWN	DSGN	CHKD	SUB	APP

**ENGINEERING SERVICES**

LANL ENGINEERING MANUAL		DESIGN	J. CARDON
SITE ELECTRICAL DISTRIBUTION STDS.		CHECKED	S. KOTHARI
LOW VOLTAGE DRY TYPE THREE PHASE TRANSFORMER ANCHORAGE REQUIREMENTS		DATE	11/1/12

BLDG X TA-X

PROJECT ENGINEER	APPROVED FOR RELEASE
DISCIPLINE POC: DUANE NIZIO	STANDARDS MANAGER: TOBIN ORUCH

**Los Alamos NATIONAL LABORATORY**  
PO Box 1663  
Los Alamos, New Mexico 87545

SHEET  
S-XXXX  
2 OF 3

CLASSIFICATION: UNCLASSIFIED	ADC: DONALD YARDMAN	DATE: 11-1-12
PROJECT ID	DRAWING NO	REV
CHAPTER 7	ST-G4010-40	0