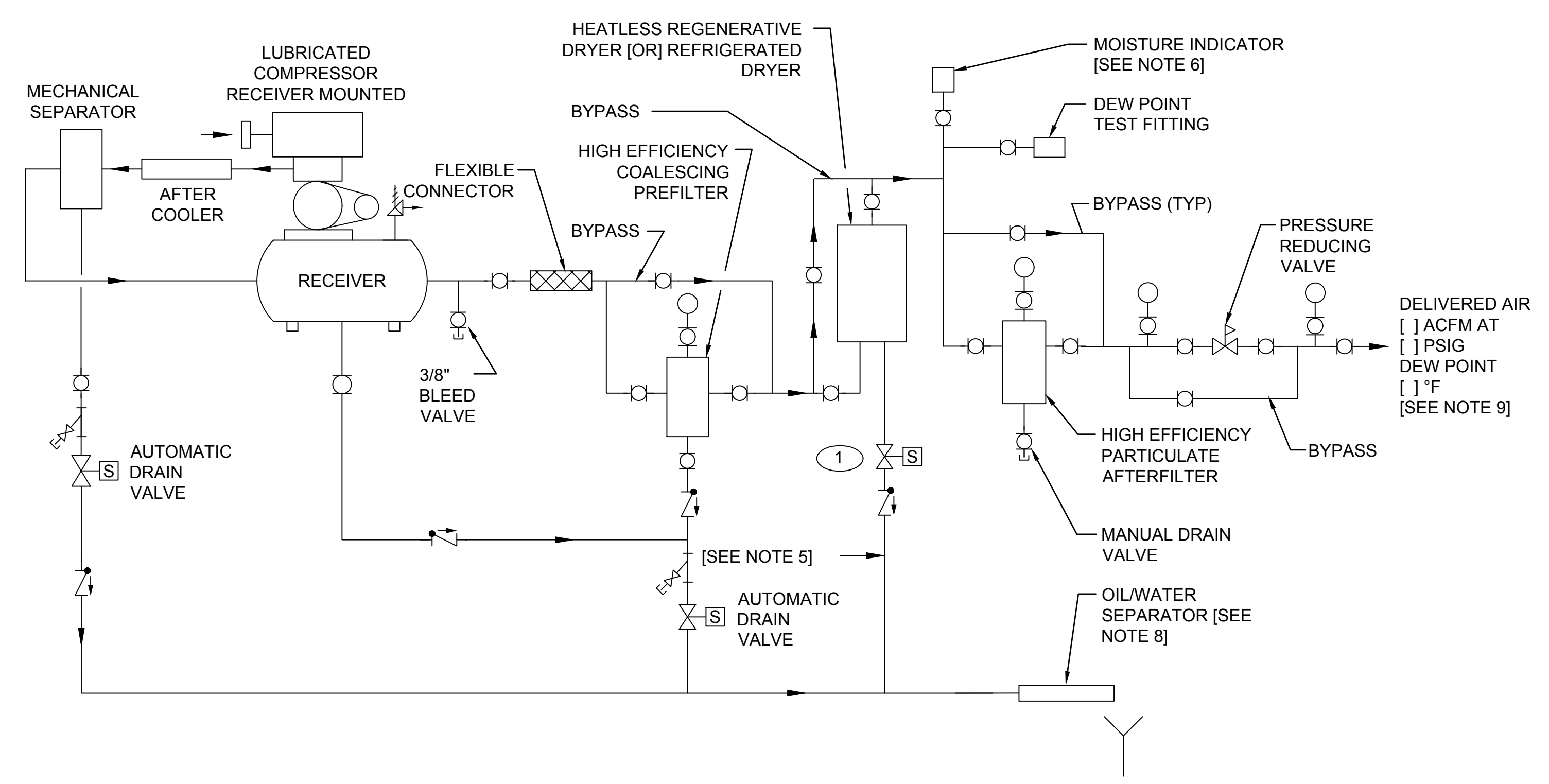


KEYED NOTES:

- 1 AUTOMATIC DRAIN VALVE FURNISHED WITH REFRIGERATED DRYER.



COMPRESSED AIR COMPONENT DETAIL
SCALE: NONE

DRAWING DEVELOPED FOR ML-3/ML-4 PROJECTS. FOR ML-1/ML-2, ADDITIONAL REQUIREMENTS AND QA REVIEWS ARE REQUIRED. (REMOVE THIS NOTE WHEN INSERTED INTO A DRAWING PACKAGE).

NOTES FOR DESIGNER: (DO NOT INCLUDE ON CONSTRUCTION DRAWINGS)

- WHEN EDITING DETAIL TO SUIT PROJECT, ADD JOB SPECIFIC REQUIREMENTS AND DELETE ONLY THOSE PORTIONS THAT DO NOT APPLY. TO SEEK A VARIANCE FROM APPLICABLE REQUIREMENTS, CONTACT THE ESM MECHANICAL POC.
- REFER TO THE FOLLOWING LANL STANDARDS FOR ADDITIONAL INFORMATION:
 - A. ENGINEERING MANUAL, MECHANICAL CHAPTER.
 - B. MASTER SPECIFICATION 01 3545, WATER DISCHARGE REQUIREMENTS.
 - C. MASTER SPECIFICATION 22 1500, COMPRESSED AIR SYSTEMS.
- ADD WATER PIPING AND ISOLATION VALVES IF COMPONENTS (COMPRESSOR, AFTERCOOLER, ETC) ARE WATER COOLED. USE NONPOTABLE WATER THAT IS CHEMICALLY TREATED.
- ALL AUTOMATIC DRAIN VALVES TO BE ON A SINGLE DEDICATED CIRCUIT WITH A SINGLE RECEPTACLE (WITHIN 48") FOR EACH VALVE.
- PROVIDE DRAIN LINE WHEN SPECIFYING A REFRIGERATED DRYER. HEATLESS REGENERATIVE DRYER DOES NOT REQUIRE A DRAIN LINE.
- PROVIDE MOISTURE INDICATOR WHEN NOT PROVIDED WITH REGENERATIVE DRYER. DO NOT INSTALL ON SYSTEM WITH REFRIGERATED DRYER.
- DETAIL SHOWS MINIMUM REQUIRED FILTERS FOR TYPE OF COMPRESSOR AND DRYER USED. COMPRESSED AIR SYSTEM MAY REQUIRE ADDITIONAL FILTERS AND POINT OF USE FILTERS. FOR EXAMPLE, AN OIL VAPOR ABSORBING FILTER, INSTALLED BETWEEN THE DRYER AND AFTERFILTER MAY BE REQUIRED WHENEVER OIL VAPORS OCCUR (HYDROCARBONS ARE DETRIMENTAL TO EQUIPMENT OR PROCESS).
- SPECIFY A COMMERCIALY AVAILABLE OIL/WATER SEPARATOR. CONSULT WITH MANUFACTURES REPRESENTATIVE FOR APPLICATION AND SIZING INFORMATION.
- REFER TO ISO 8573-1 AND THE ESM MECHANICAL CHAPTER SECTION D2090 FOR COMPRESSED AIR QUALITY GUIDANCE.

NO	DATE	CLASS REV	DC	DESCRIPTION	DWN	DSGN	CHKD	SUB	APP
4	06-15-2017	UNCLASS	TO	ADMIN. CHANGES TO CAD STD. REV#5 FORMAT	JB	AJ	ML	ML	TO
3	08-13-2003	U	LB	EDITORIAL CHANGES & DWG. NO. WAS ST6020	RP	JM	RR	GG	TO
2	09-06-2002	U	LB	REVISED NOTES AND ADDED "ML" NOTES	RP	JR	GG	GG	TO
1	02-07-2001	U	LB	REVISED FLOW DIAGRAM, NOTES, AND ADDED SHEET 3 AND 4	RP	JR	RR	TO	TO

ENGINEERING STANDARDS

MECHANICAL

DRAWN	R. PEARSON
DESIGN	J. RATLIFF
CHECKED	R. ROMERO
DATE	06-28-1999

TA- XX BLDG- XX

SUBMITTED DISCIPLINE POC: GURINDER GREWAL APPROVED FOR RELEASE STANDARDS MANAGER: TOBIN ORUCH

1

1 OF **4**

D.C.: U REVIEWER: LARRY BAYS DATE: 06-28-1999

PROJECT ID DRAWING NO DATE: 06-28-1999

CHAPTER 6 ST-D2090-1 REV **4**

00% REVIEW NOT FOR CONSTRUCTION

D
C
B
A