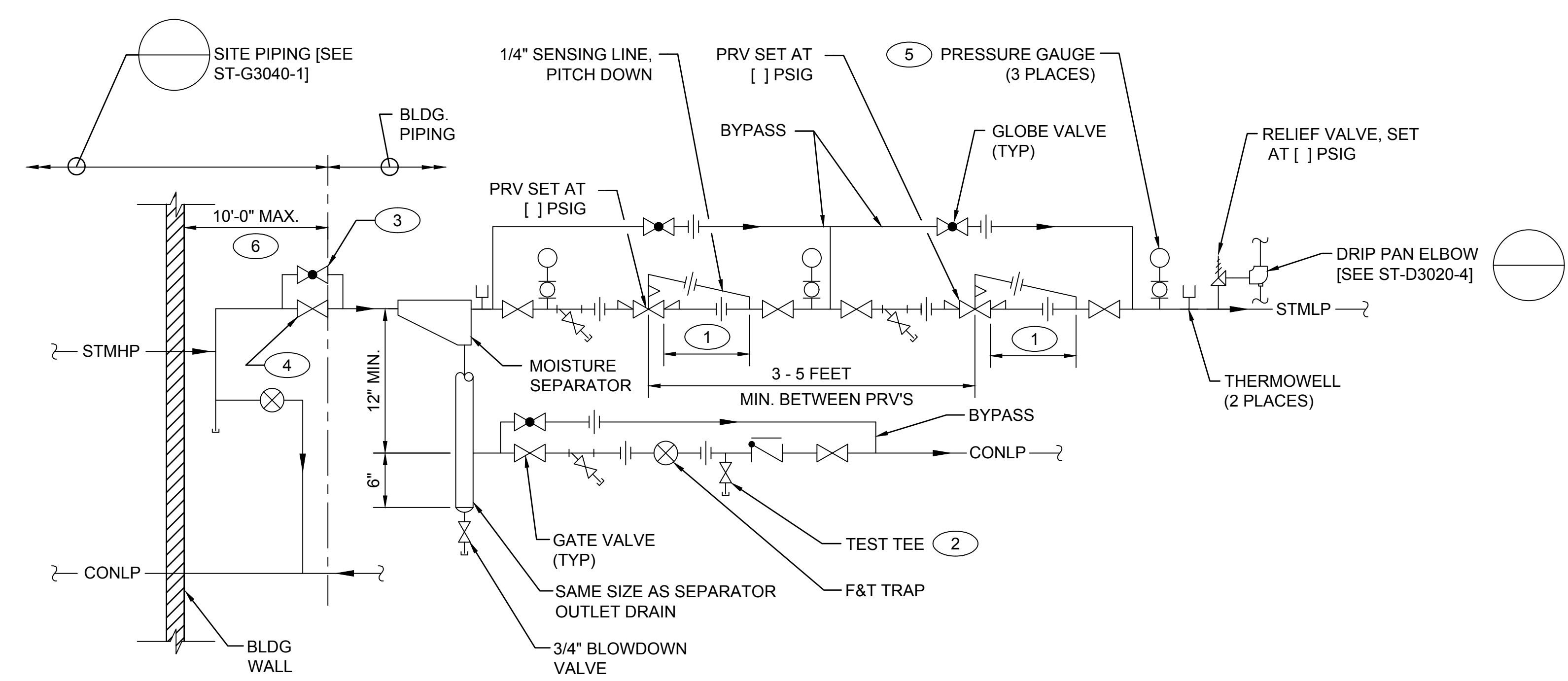


D  
C  
B  
A

**KEYED NOTES:**

- 1 CONNECT SENSING LINE TO A STRAIGHT SECTION OF PIPING, MINIMUM 10 PIPE DIAMETERS OR 24", WHICHEVER IS GREATER.
- 2 PROVIDE 1/2" VALVE IN BOTTOM OF CONDENSATE LINE.
- 3 3/4" BYPASS FOR INITIAL WARM-UP.
- 4 FIRST SHUTOFF VALVE INSIDE BUILDING.
- 5 ON STEAM SERVICE, PROTECT THE PRESSURE GAUGE WITH A PIGTAIL SIPHON.
- 6 FIRST SHUTOFF VALVE AND TRAP SHOULD BE WITHIN 10 FEET OF THE EXTERIOR WALL ENTRY POINT.



DRAWING DEVELOPED FOR ML-3/ ML-4 PROJECTS. FOR ML-1/ ML-2, ADDITIONAL REQUIREMENTS AND QA REVIEWS ARE REQUIRED. (REMOVE THIS NOTE WHEN INSERTED INTO A DRAWING PACKAGE).

**STEAM PRV STATION DETAIL (2 STAGE)**  
SCALE: NONE

**NOTES FOR DESIGNER:** (DO NOT INCLUDE ON CONSTRUCTION DRAWINGS)  
1. SEE SHEET 4.

NO	DATE	CLASS REV	DC	DESCRIPTION	DWN	DSGN	CHKD	SUB	APP
4	06-23-2017	UNCLASS	TO	ADMIN. CHANGES TO CAD STD. REV#5 FORMAT	JB	AJ	ML	ML	TO
3	01-04-2006	U	LB	ADDED KEY NOTE 6 AND REVISED TITLE BLOCK	RP	AY	AY	CD	TO
2	09-08-2004	U	LB	ADDED 'F & T' TO MOISTURE SEPERATOR TRAP.	RP	RF	MN	CD	TO
1	08-13-2003	U	LB	REVISED DETAIL. DWG. NO. WAS ST6940	RP	RF	JM	GG	TO

**ENGINEERING STANDARDS**

**MECHANICAL**

**STEAM PRV STATION DETAIL DUAL STAGE**

DRAWN	R.PEARSON
DESIGN	R.FROST
CHECKED	C.DUPRE
DATE	06-28-1999

TA- XX BLDG- XX

SUBMITTED DISCIPLINE POC: GURINDER GREWAL APPROVED FOR RELEASE STANDARDS MANAGER: TOBIN ORUCH

SHEET **2** OF **4**

Los Alamos NATIONAL LABORATORY PO Box 1663 Los Alamos, New Mexico 87545

D.C.: U REVIEWER: LARRY BAYS DATE: 06-28-1999

PROJECT ID DRAWING NO **CHAPTER 6 ST-D3020-2** REV **4**

00% REVIEW  
NOT FOR CONSTRUCTION