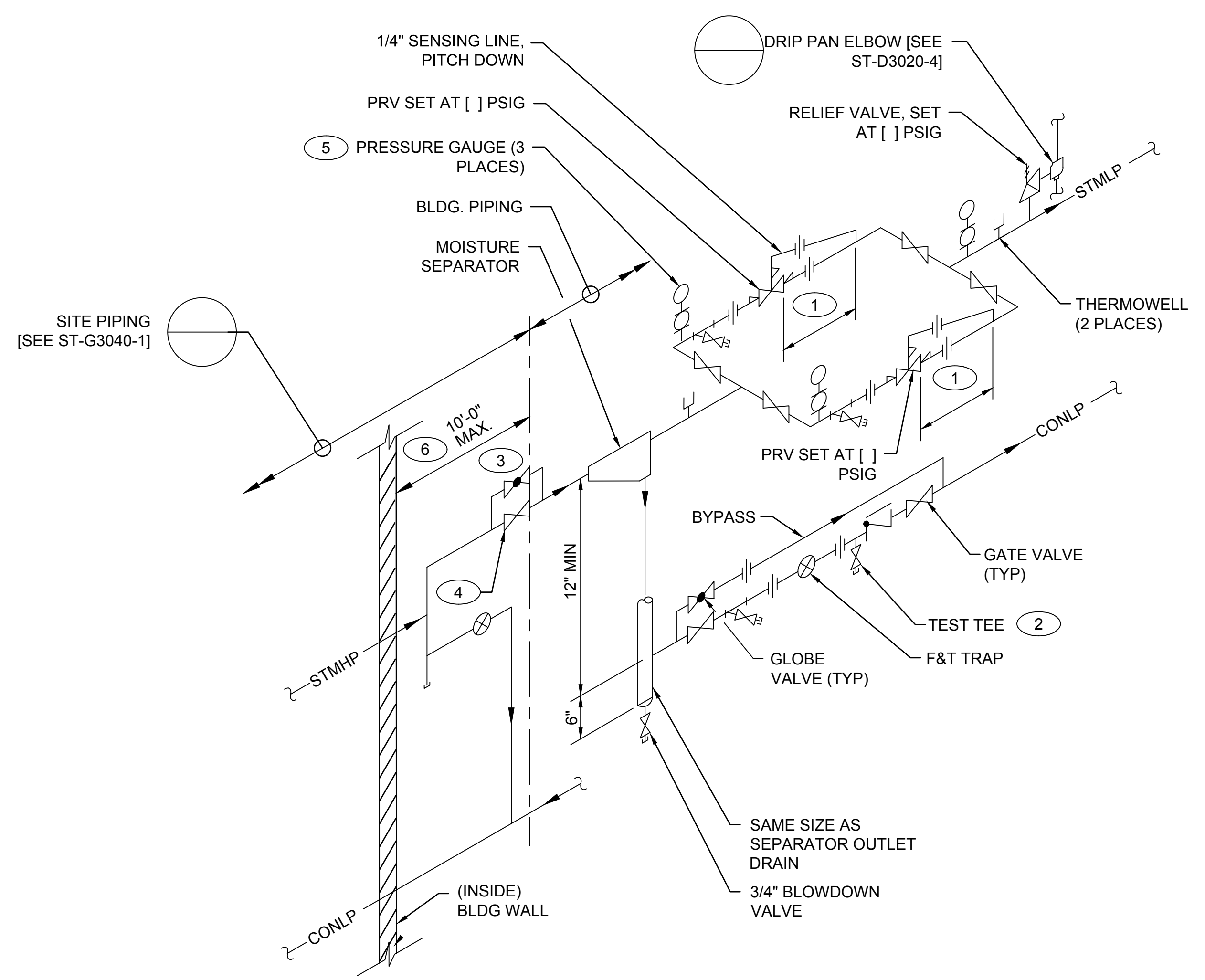


**KEYED NOTES:**

- 1 CONNECT SENSING LINE TO A STRAIGHT SECTION OF PIPING, MINIMUM 10 PIPE DIAMETERS OR 24" WHICHEVER IS GREATER.
- 2 PROVIDE 1/2" VALVE IN BOTTOM OF CONDENSATE LINE.
- 3 3/4" BYPASS FOR INITIAL WARM-UP.
- 4 FIRST SHUTOFF VALVE INSIDE BUILDING.
- 5 ON STEAM SERVICES, PROTECT THE PRESSURE GAUGE WITH A PIGTAIL SIPHON.
- 6 FIRST SHUTOFF VALVE AND TRAP SHOULD BE WITHIN 10 FEET OF THE EXTERIOR WALL ENTRY POINT.



DRAWING DEVELOPED FOR ML-3/ML-4 PROJECTS. FOR ML-1/ML-2, ADDITIONAL REQUIREMENTS AND QA REVIEWS ARE REQUIRED. (REMOVE THIS NOTE WHEN INSERTED INTO A DRAWING PACKAGE).

| NO | DATE       | CLASS REV | DC | DESCRIPTION                             | DWN | DSGN | CHKD | SUB | APP |
|----|------------|-----------|----|---|-----|------|------|-----|-----|
| 4  | 06-23-2017 | UNCLASS   | TO | ADMIN. CHANGES TO CAD STD. REV#5 FORMAT | JB  | AJ   | ML   | ML  | TO  |
| 3  | 01-04-2006 | U         | LB | ADDED KEY NOTE AND REVISED TITLE BLOCK  | RP  | AY   | AY   | CD  | TO  |
| 2  | 06-03-2004 | U         | LB | ADDED F & T TO MOISTURE SEPARATOR TRAP  | RP  | RF   | JM   | CD  | TO  |
| 1  | 08-13-2003 | U         | LB | REVISED DETAIL. DWG NO. WAS ST6202.     | RP  | RF   | JM   | GG  | TO  |

**STEAM PRV STATION DETAIL PARALLEL PRVs**  
SCALE: NONE

**NOTES FOR DESIGNER:** (DO NOT INCLUDE ON CONSTRUCTION DRAWINGS)  
1. SEE SHEET 4.

00% REVIEW  
NOT FOR CONSTRUCTION

**ENGINEERING STANDARDS**

|   |                   |   |                  |
|---|-------------------|---|------------------|
| <b>MECHANICAL</b>                         |                   | DRAWN   | R. PEARSON       |
| <b>STEAM PRV STATION DETAIL PARALLEL</b>  |                   | DESIGN  | R. FROST         |
|   |                   | CHECKED   | C. DUPRE         |
|   |                   | DATE  | 06-28-1999       |
| TA- XX                                    | BLDG- XX          |   |                  |
| SUBMITTED DISCIPLINE POC: GURINDER GREWAL |                   | APPROVED FOR RELEASE STANDARDS MANAGER: TOBIN ORUCH |                  |
|   |                   | SHEET <b>3</b> OF <b>4</b>                          |                  |
| D.C.: U                                   |                   | REVIEWER: LARRY BAYS                                | DATE: 06-28-1999 |
| PROJECT ID                                | DRAWING NO        | REV   |                  |
| <b>CHAPTER 6</b>                          | <b>ST-D3020-2</b> | <b>4</b>  |                  |