

1

2

3

4

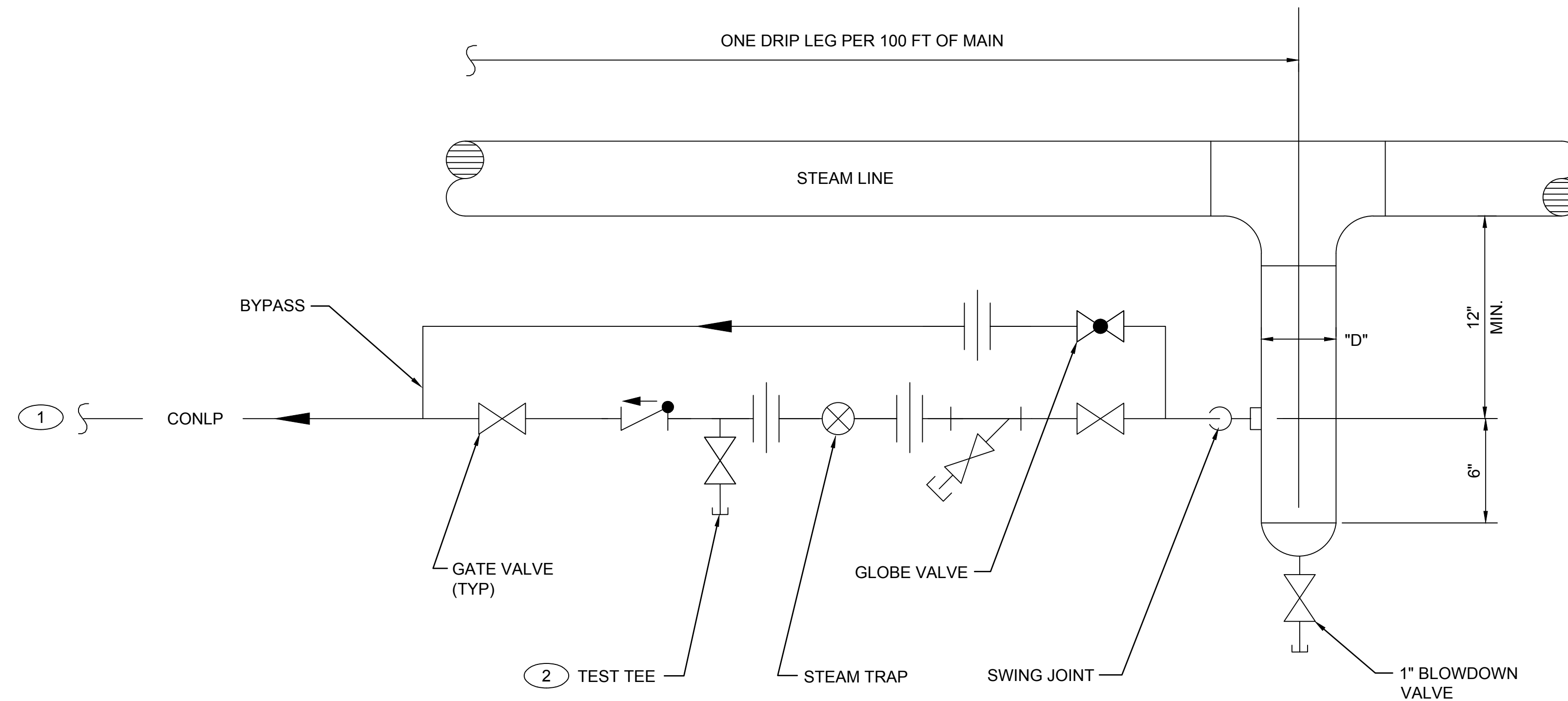
5

6

KEYED NOTES:

- ① CONNECT STEAM TRAP CONDENSATE BRANCH LINE INTO TOP OF CONDENSATE MAIN OR AT 45° ANGLE FROM TOP OF MAIN.
- ② PROVIDE 1/2" VALVE IN BOTTOM OF CONDENSATE LINE.

STEAM LINE SIZE	"D" (MIN)
UP TO 4"	LINE SIZE
6"	4"
8"	4"
10"	6"
12"	6"
14"	8"
16"	8"



DRAWING DEVELOPED FOR ML-3/ML-4 PROJECTS. FOR ML-1/ML-2, ADDITIONAL REQUIREMENTS AND QA REVIEWS ARE REQUIRED. (REMOVE THIS NOTE WHEN INSERTED INTO A DRAWING PACKAGE).

STEAM DRIP LEG DETAIL
SCALE: NONE

NOTES FOR DESIGNER: (DO NOT INCLUDE ON CONSTRUCTION DRAWINGS)

- 1. SEE SHEET 2.

2	06-23-2017	UNCLASS	TO	ADMIN. CHANGES TO CAD STD. REV#5 FORMAT	JB	AJ	ML	ML	TO
1	08-13-2003	U	LB	REVISED TO COMPLY WITH DRAFTING MANUAL. DWG NO. WAS ST6203	RP	RF	JM	GG	TO
NO	DATE	CLASS REV	DC	DESCRIPTION	DWN	DSGN	CHKD	SUB	APP

ENGINEERING STANDARDS

MECHANICAL		DRAWN	R. PEARSON
STEAM DRIP LEG DETAIL ALONG PIPE RUN		DESIGN	A. BRIDGE
		CHECKED	G. GREWAL
		DATE	06-25-99
TA- XX	BLDG- XX	SHEET 1	
SUBMITTED DISCIPLINE POC: GURINDER GREWAL		APPROVED FOR RELEASE STANDARDS MANAGER: TOBIN ORUCH	
Los Alamos NATIONAL LABORATORY		PO Box 1663 Los Alamos, New Mexico 87545	
D.C.: U	REVIEWER: LARRY BAYS	DATE: 06-25-99	
PROJECT ID	DRAWING NO	REV	2
CHAPTER 6	ST-D3020-3		

00% REVIEW NOT FOR CONSTRUCTION

D
C
B
A