

**KEYED NOTES:**

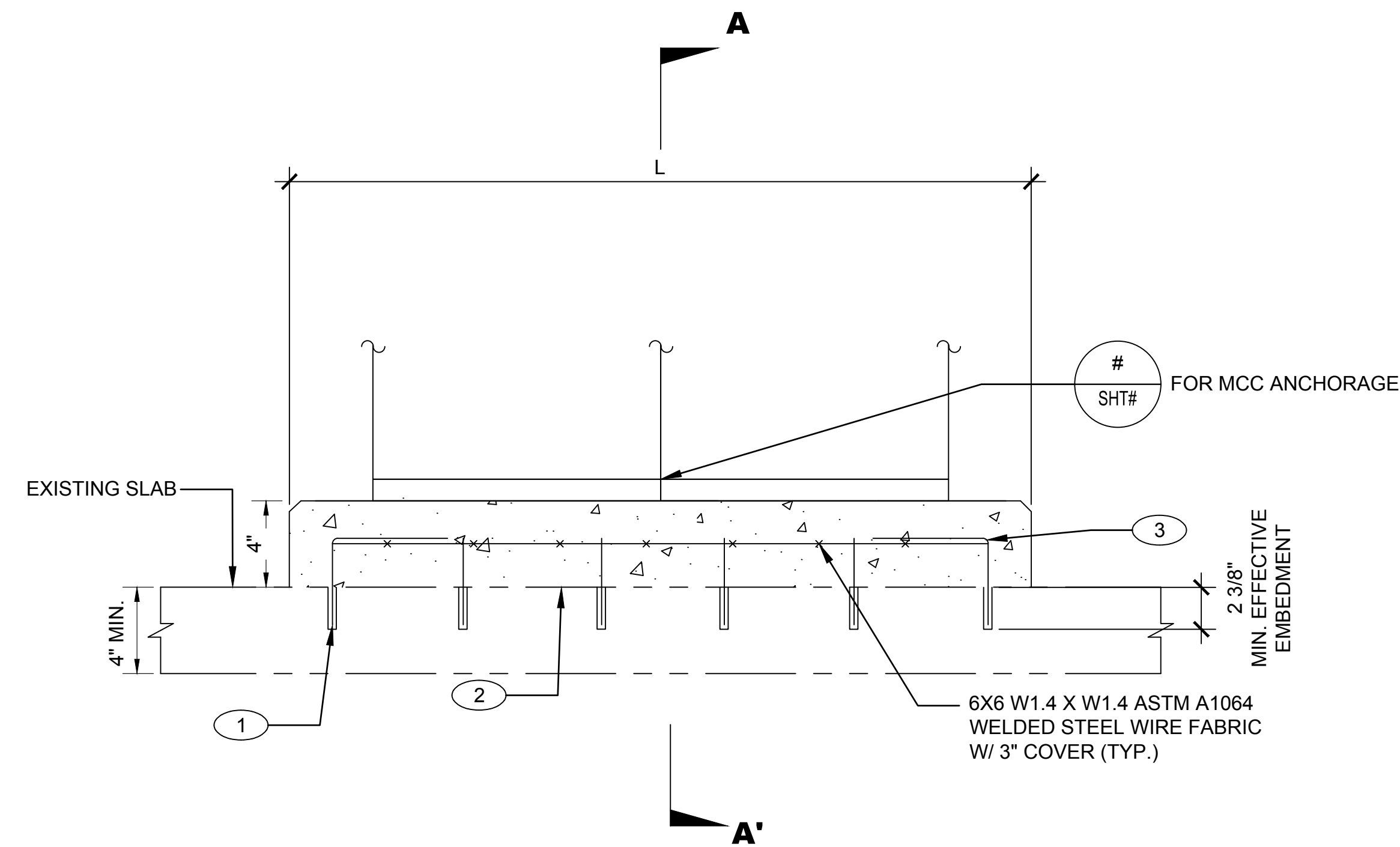
- 1 SEE TABLE B FOR NUMBER OF ANCHORS REQUIRED AROUND PERIMETER. PLACE CORNER ANCHORS WITH SPECIFIED 4" COVER, THEN EQUALLY SPACE REMAINING ANCHORS ALONG SIDES (APPROXIMATELY 8" O.C.).
- 2 ROUGHEN AND CLEAN TO FULL AMPLITUDE OF APPROXIMATELY 1/4". COAT WITH BONDING AGENT PRIOR TO PLACING NEW CONCRETE (TYP.)
- 3 #4 REBAR HILTI HIT-RE 500-V3 ADHESIVE ANCHOR ASTM A615 GR. 60, W/ 3" COVER FROM EACH EDGE AND MIN. 2 3/8" EMBEDMENT IN EXISTING FLOOR. BEND AND TIE TO WIRE MESH WITH 6" HOOK. (TYP.)

**GENERAL NOTES:**

- A. IF THIS SHEET IS NOT 24"x36" USE GRAPHIC SCALE ACCORDINGLY.
- B. ADHESIVE ANCHORS:
  - PROVIDE #4 REBAR HILTI HIT-RE 500 V3 ADHESIVE ANCHORS 2-3/8" MINIMUM EFFECTIVE EMBEDMENT. INSTALL ANCHORS PER MPII AND ICC-ESR-3814.
  - ESTABLISH THE EXISTING REBAR PATTERN W/ GPR AROUND CONCRETE ANCHORS TO PROVIDE A MINIMUM OF 1-1/2" CLEAR TO AVOID CONFLICT WITH EXISTING REINFORCING WHEN INSTALLING POST INSTALLED ANCHORS.
- C. MINIMUM ANCHOR LAYOUT:
  - MINIMUM SPACING = 6".
  - MINIMUM CONCRETE EDGE DISTANCE = 8".
- D. MINIMUM CONCRETE PROPERTIES FOR ANCHORAGE OF PAD TO SLAB:
  - CONCRETE TO BE NORMAL WEIGHT.
  - CONCRETE COMPRESSIVE STRENGTH F'C = 2500 PSI.
  - MINIMUM SLAB THICKNESS = 4".
- E. ALL SPECIAL INSPECTIONS FOR ANCHORS SHALL BE COMPLETED PER THE STATEMENT OF SPECIAL INSPECTIONS.

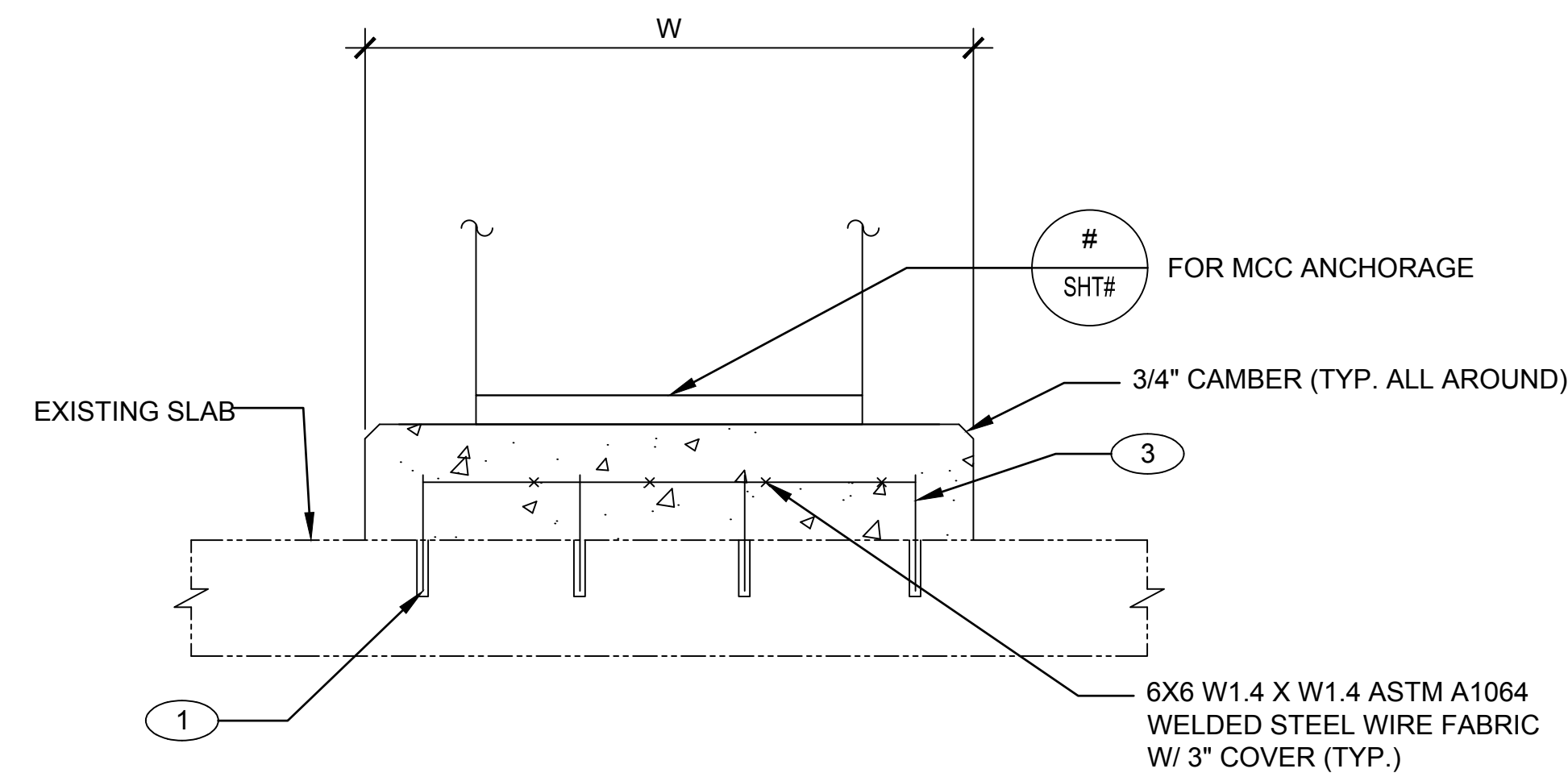
NOTES FOR EOR:  
(DO NOT INCLUDE ON CONSTRUCTION DRAWING)

1. EDIT TO BE PROJECT SPECIFIC.
2. COMPLY WITH CURRENT EDITION OF LANL CAD STANDARDS MANUAL.
3. ASSIGN AN APPROPRIATE SHEET & DRAWING NUMBER PER THE CURRENT LANL CAD STANDARDS MANUAL.
4. ADHESIVE ANCHORS PER LANL MASTER SPEC FOR NORMAL CONFIDENCE POST-INSTALLED ANCHORS.
5. ADHESIVE ANCHORS SHALL BE INSTALLED IN COMPLIANCE WITH THE MPII AND ICC-ESR 3814.



# SHT# **PAD TO SLAB ANCHORAGE DETAILS**

4" 0 6" 1"  
1 1/2"=1'-0"



**SECTION A-A'**

4" 0 6" 1"  
1 1/2"=1'-0"

**TABLE B: HOUSEKEEPING PAD TO EXISTING SLAB ANCHORAGE**

NUMBER OF MCC UNITS	1	2	3	4	5	6	7	8	9	10	11	12
MIN. PAD LENGTH, L	3'-0"	4'-8"	6'-4"	8'-0"	9'-8"	11'-4"	13'-0"	14'-2"	15'-10"	17'-6"	19'-2"	20'-10"
MIN. PAD WIDTH, W	3'-0"	3'-0"	3'-0"	3'-0"	3'-0"	3'-0"	3'-0"	3'-0"	3'-0"	3'-0"	3'-0"	3'-0"
MIN. # OF REBAR ANCHORS (PER LONG SIDE) FOR ANCHORAGE OF PAD TO SLAB	3	5	6	8	10	11	13	15	16	18	20	21
MIN. # OF REBAR ANCHORS (PER SHORT SIDE) FOR ANCHORAGE OF PAD TO SLAB	3	3	3	3	3	3	3	3	3	3	3	3

1	03/08/18	UNCLASS		UPDATED CALCS & DRAWINGS TO IBC 2015 & TO CAD STDS MANUAL REV 5. CHANGED SHEET # FROM S-5000.	BW	BW	GP	GP	TO
NO	DATE	CLASS REV	DC	DESCRIPTION	DWN	DSGN	CHKD	SUB	APP

**ENGINEERING STANDARDS**

**STRUCTURAL**

**MOTOR CONTROL CENTER ANCHORAGE  
HOUSEKEEPING PAD TO EXISTING SLAB ANCHORAGE**

TA-XX BLDG XXXX

DATE: 1/2/2013

DRAWN: S. THOMSON  
DESIGN: S. THOMSON  
CHECKED: S. KOTHARI

Los Alamos NATIONAL LABORATORY  
PO Box 1663, Los Alamos, New Mexico 87545

D.C.: UNCLASSIFIED REVIEWER: E.J. SEAWALT DATE: 1/2/2013

PROJECT ID: CHAPTER 5 DRAWING NO: ST-D5020-3 REV: 1

3 OF 3

00% REVIEW  
NOT FOR CONSTRUCTION