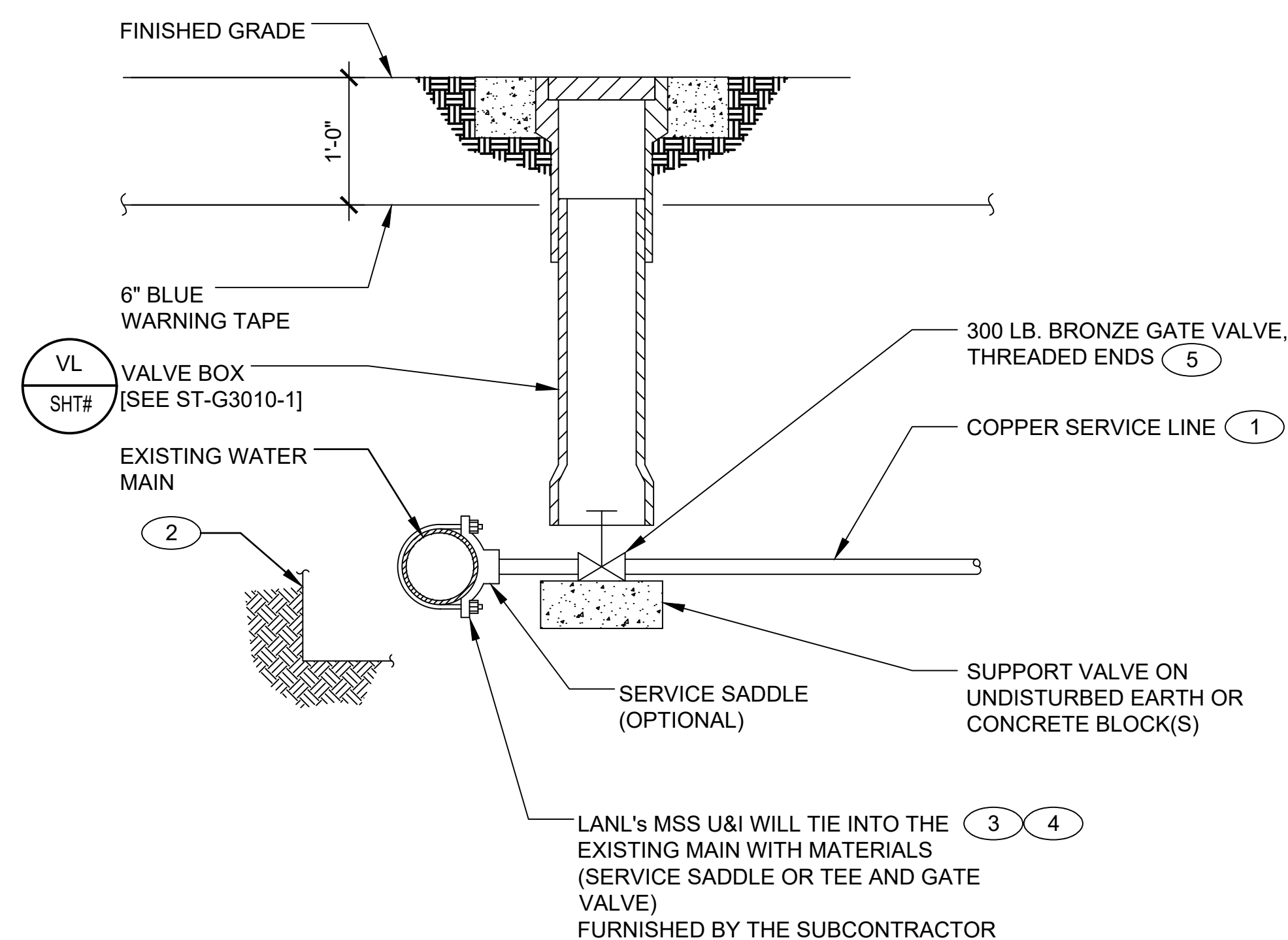


GENERAL NOTES:

- 1. IF THIS SHEET IS NOT 24"X36" USE GRAPHIC SCALE ACCORDINGLY.

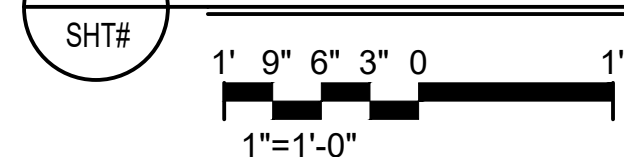
KEYED NOTES:

- 1. RUN NEW SERVICE LINE TO WITHIN 6" OF EXISTING MAIN
- 2. MINIMUM BELL HOLE AT BOTTOM OF TRENCH: 24" FROM CENTERLINE OF NEW PIPE ON EACH SIDE; 18" FROM EDGE ON BACK SIDE; 8'-0" IN FRONT OF MAIN (LENGTH OF BELL HOLE); 18" UNDER MAIN. TAPER OR STEP TRENCH TO MEET OSHA REQUIREMENTS.
- 3. LANL CONSTRUCTION INSPECTOR WILL ENSURE MATERIALS REQUIRED FOR HOT TAP OR CUT IN TEE ARE AT JOB SITE, DISINFECTION AND PRESSURE TESTING OF THE SERVICE LINE HAVE BEEN COMPLETED, AND EXCAVATION OF BELL HOLE IS DONE PRIOR TO NOTIFYING MSS U&I
- 4. LANL CONSTRUCTION INSPECTOR WILL GIVE MSS U&I 15 WORKING DAYS NOTICE OF THE NEED TO SCHEDULE A TIE-IN TO EXISTING UTILITIES.
- 5. LOCATE GATE VALVE NEAR MAIN - PREFERABLY IN UNPAVED AREA.



DRAWING DEVELOPED FOR ML-3/ML-4 PROJECTS. FOR ML-1/ML-2, ADDITIONAL REQUIREMENTS AND QA REVIEWS ARE REQUIRED. (REMOVE THIS NOTE WHEN INSERTED INTO A DRAWING PACKAGE)

VL WATER PIPING TIE-IN DETAIL



NOTES FOR DESIGNER: (DO NOT INCLUDE ON CONSTRUCTION DRAWINGS)

- 1. WHEN EDITING DETAIL TO SUIT PROJECT, ADD JOB SPECIFIC REQUIREMENTS AND DELETE ONLY THOSE PORTIONS THAT DO NOT APPLY. TO SEEK A VARIANCE FROM APPLICABLE REQUIREMENTS, CONTACT THE ESM CIVIL POC.
- 2. REFER TO LANL MASTER STANDARDS FOR ADDITIONAL REQUIREMENTS:
 - 2.1. ENGINEERING MANUAL, CIVIL CHAPTER.
 - 2.2. MASTER SPECIFICATION 31 2000, EARTH MOVING.
 - 2.3. MASTER SPECIFICATION 33 1000, WATER UTILITIES.
 - 2.4. MECHANICAL DRAWING ST-D2020-1, SITE/BUILDING WATER COMPONENTS DIAGRAM.
- 3. CONSULT WITH LANL UTILITIES & INSTITUTIONAL FACILITIES GROUP WATER SYSTEM REPRESENTATIVE FOR ALL TIE-INS DURING DESIGN PHASE.

NO	DATE	CLASS REV	DC	DESCRIPTION	DWN	DSGN	CHKD	SUB	APP
5	07/21/2020	U	DY	GENERAL REVISION	MT	MT	DY	JO	TO
4	09/01/2016	UNCLASS	EJS	ADMIN. CHANGES TO NEW FORMAT CAD STD REV#5. MINOR DESIGN CHANGES	EJS	MS	MS	CJRR	TO
3	01/28/2014	U		GENERAL REVISION	KT	MS	JG	RT	TO
2	08/14/2003	U		EDITORIAL CHANGES & REVISED NOTE 4.	RP	JH	MS	EH	TO
1	08/23/2002	U		GENERAL REVISION & DWG. NO. WAS ST6105.	RP	EH	MS	EH	TO

ENGINEERING STANDARDS

CIVIL		DRAWN	R. PEARSON
WATER PIPING TIE-IN DETAIL		DESIGN	E. HOTH
3/4" TO 2" COPPER SERVICE LINE		CHECKED	M. SMITHOUR
TA- XX	BLDG XXXX	DATE	6-28-99
SUBMITTED DISCIPLINE POC: EDWARD HOTH		APPROVED FOR RELEASE STANDARDS MANAGER: TOBIN ORUCH	
Los Alamos NATIONAL LABORATORY		SHEET 1	
PO Box 1663 Los Alamos, New Mexico 87545		1 OF 2	
D.C.: UNCLASSIFIED	REVIEWER: LARRY BAYS	DATE:	
PROJECT ID	DRAWING NO	REV	
CHAPTER 3	ST-G3010-2.1	5	

00% REVIEW
NOT FOR CONSTRUCTION