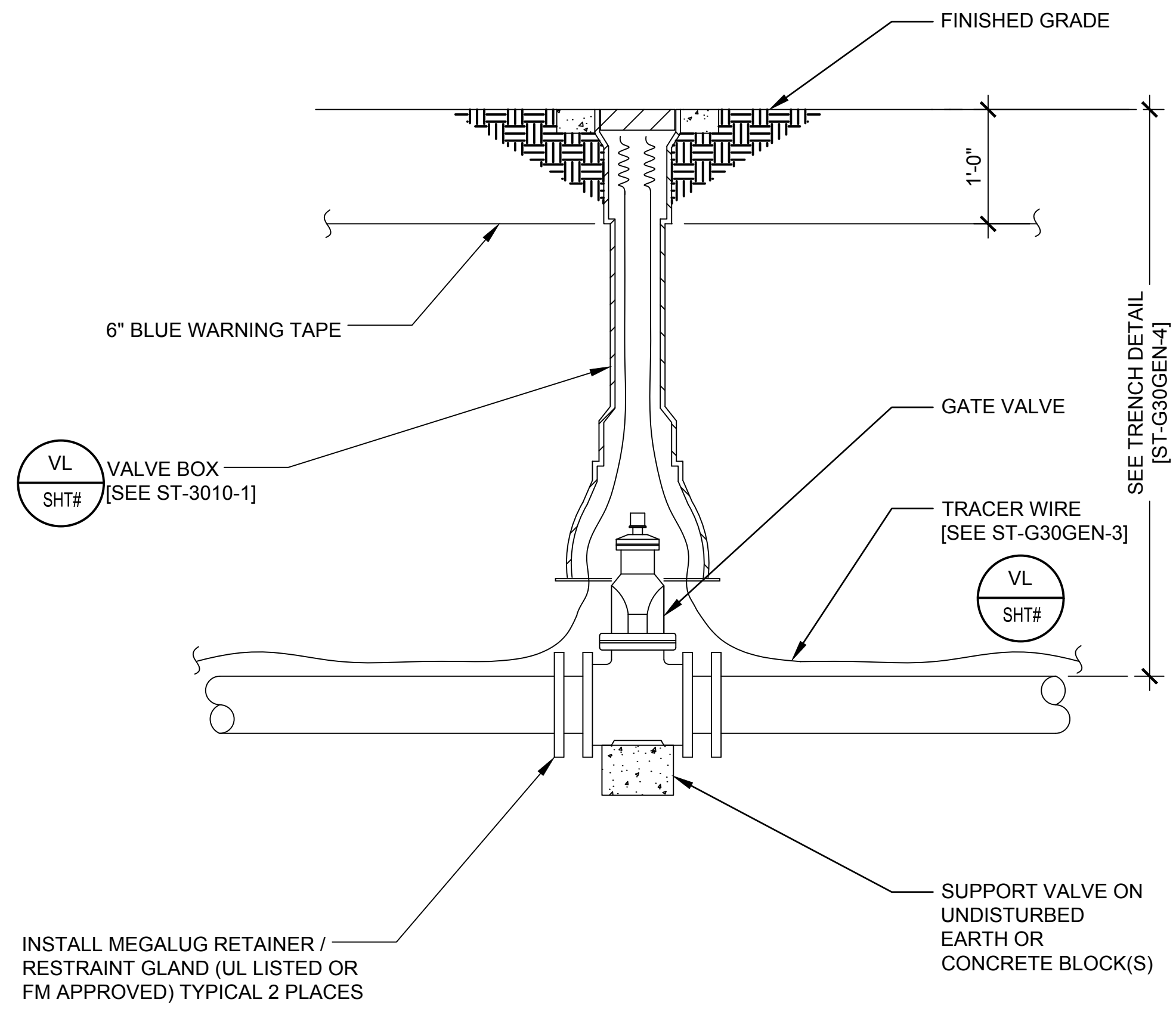


GENERAL NOTES:
 1. IF THIS SHEET IS NOT 24"X36" USE GRAPHIC SCALE ACCORDINGLY.



DRAWING DEVELOPED FOR ML-3/ML-4 PROJECTS. FOR ML-1/ML-2, ADDITIONAL REQUIREMENTS AND QA REVIEWS ARE REQUIRED. (REMOVE THIS NOTE WHEN INSERTED INTO A DRAWING PACKAGE)

WATER PIPING TIE-IN DETAIL
 1"=1'-0"

- NOTES FOR DESIGNER:** (DO NOT INCLUDE ON CONSTRUCTION DRAWINGS)
- WHEN EDITING DETAIL TO SUIT PROJECT, ADD JOB SPECIFIC REQUIREMENTS AND DELETE ONLY THOSE PORTIONS THAT DO NOT APPLY. TO SEEK A VARIANCE FROM APPLICABLE REQUIREMENTS, CONTACT THE ESM CIVIL POC.
 - REFER TO LANL MASTER STANDARDS FOR ADDITIONAL REQUIREMENTS:
 - ENGINEERING MANUAL, CIVIL CHAPTER.
 - MASTER SPECIFICATION 31 2000, EARTH MOVING.
 - MASTER SPECIFICATION 33 1000, WATER UTILITIES.
 - CIVIL DRAWING ST-3010-4, BOLLARD DETAIL.
 - MECHANICAL DRAWING ST-D2020-1, SITE/BUILDING WATER COMPONENTS DIAGRAM.

NO	DATE	CLASS REV	DC	DESCRIPTION	DWN	DSGN	CHKD	SUB	APP
3	09/01/2016	UNCLASS		ADMIN. CHANGES TO NEW FORMAT CAD STD REV#5. MINOR DESIGN CHANGES & INCORPORATED DESIGN NOTES FROM SHEET 3 OF 3.	EJS	MS	MS	CJRR	TO
2	01/28/2014	U		GENERAL REVISION	KT	MS	JG	RT	TO
1	08/23/2002	U		GENERAL REVISION & DWG. NO. WAS ST6108.	RP	EH	MS	EH	TO

ENGINEERING STANDARDS

CIVIL

DRAWN	R. PEARSON
DESIGN	E. HOTH
CHECKED	M. SMITHOUR
DATE	6-28-99

WATER PIPING SHUT-OFF VALVE DETAIL
4" TO 12" LINE SIZE

TA- XX BLDG XXXX

SUBMITTED DISCIPLINE POC: EDWARD HOTH APPROVED FOR RELEASE STANDARDS MANAGER: TOBIN ORUCH

SHEET **1**

1 OF **2**

D.C.: UNCLASSIFIED REVIEWER: LARRY BAYS DATE:

PROJECT ID DRAWING NO **CHAPTER 3 ST-G3010-3.1** REV **3**

00% REVIEW
 NOT FOR CONSTRUCTION

D
 C
 B
 A