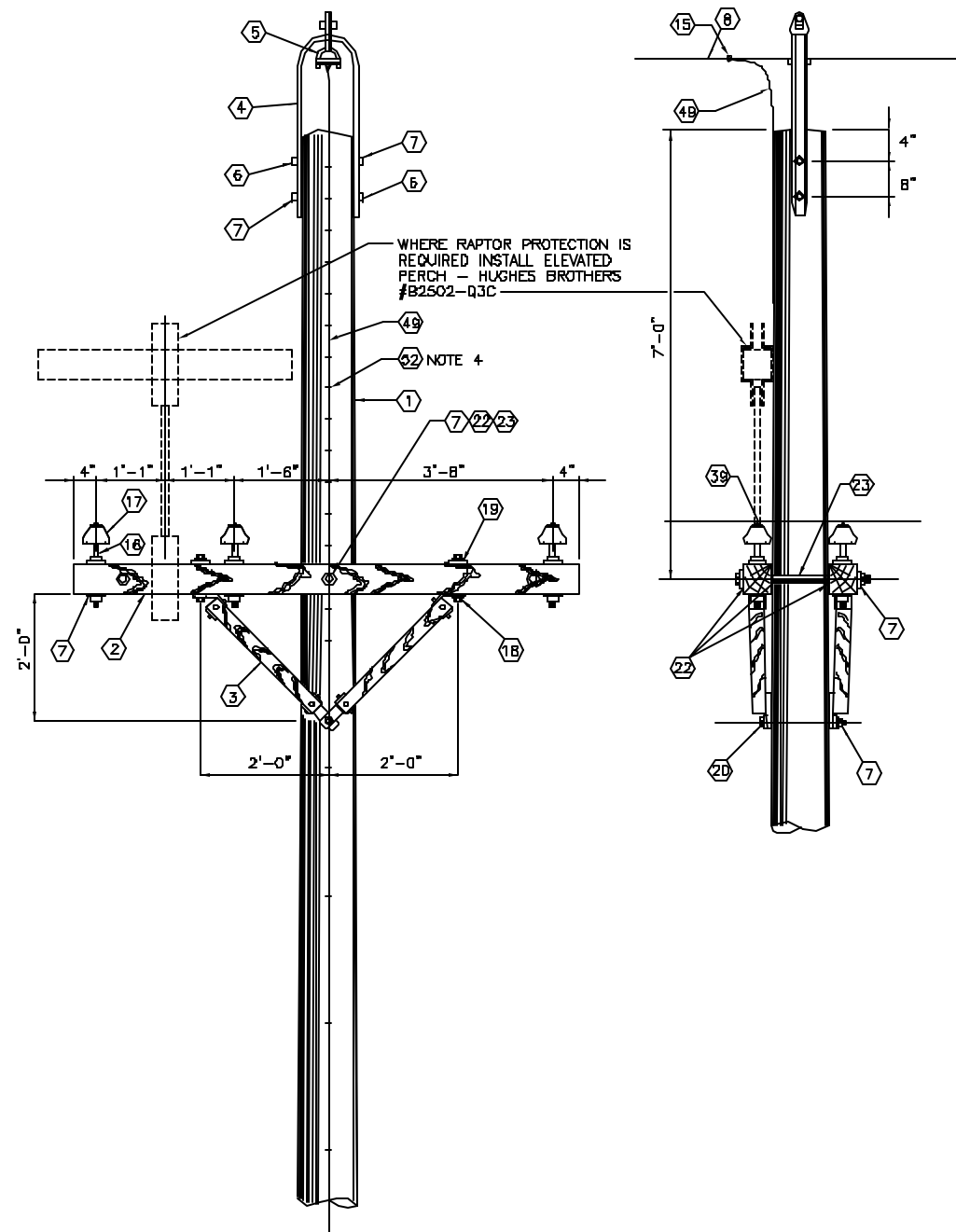
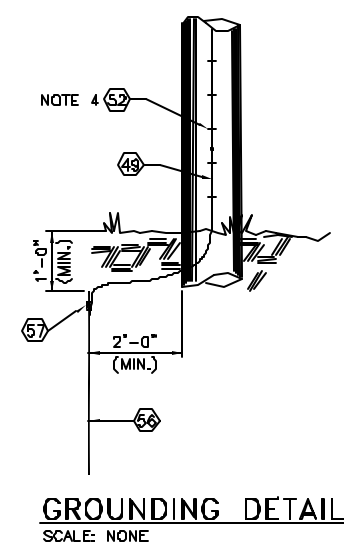


C:\LANL\Engineering\Blamere\Eng. Manual [LEU]2 - Approved\ST-G4010-11E1.dwg, 10/31/02 ■ 11:58 08360B



0°-15° ANGLE STRUCTURE DETAIL
SCALE: NONE



GROUNDING DETAIL
SCALE: NONE

GENERAL NOTES:

1. 7'-0" FRAMING DIMENSION SHALL BE CHANGED TO 8'-0" WHEN POLE BAND IS USED FOR STATIC WIRE.
2. CONSTRUCTION FOR WIRE SIZES #4 SOLID COPPER TO #3/D ACSR (5/1).
3. GROUND OVERHEAD STATIC AT EVERY POLE (SEE GROUNDING DETAIL). WHERE RAPTOR PROTECTION IS REQUIRED, GROUNDING DOWN CONDUCTOR SHALL BE INSULATED TO 3'-0" BELOW CROSS ARM BRACE.
4. STAPLES ON GROUND WIRE SHALL BE 2'-0" APART EXCEPT FOR A DISTANCE OF 8'-0" ABOVE GROUND AND 8'-0" FROM TOP OF POLE WHERE THEY SHALL BE 6" APART.
5. FOR BILL OF MATERIALS, SEE DWG. ST-G4010-11, SH. 2 OF 2.
6. EQUIPMENT ITEM NUMBERS ((1)) REFER TO EQUIPMENT NUMBERS IN LANL SUPPORT SERVICES CONTRACTOR'S MASTER BILL OF MATERIALS. ONLY THOSE NUMBERS USED ON THIS DRAWING ARE SHOWN.

NOTES FOR DESIGNER:
(DO NOT INCLUDE ON CONSTRUCTION DRAWING)

1. COMPLY WITH CURRENT EDITION OF LANL DRAFTING MANUAL FOR CALL-OUTS PROTOCOL AND LOCATION OF SCHEDULES/MATERIAL.
2. ASSIGN AN APPROPRIATE DRAWING NUMBER PER CURRENT EDITION OF LANL DRAFTING MANUAL PROTOCOL FOR DETAILS.

DRAWING DEVELOPED FOR ML-3/ML-4 PROJECTS. FOR ML-1/ML-2, ADDITIONAL REQUIREMENTS AND QA REVIEWS ARE REQUIRED. (REMOVE THIS NOTE WHEN INSERTED INTO A DRAWING PACKAGE).

NO.	DATE	CLASS REV	DESCRIPTION	OWN	VER	CHKD	SUB	APP
FACILITY & WASTE OPERATIONS SYSTEMS ENGINEERING & MAINTENANCE								
LANL ENGINEERING MANUAL SITE ELECTRICAL DISTRIBUTION STDS.							DRAWN	M. BAKER
DISTRIBUTION 0°-15° ANGLE STRUCTURE DETAIL							DESIGN	D. BRYANT
BLDG. X							CHECKED	J. LANDMAN
SUBMITTED							DATE	9/30/02
DISCIPLINE POCI DAVID POWELL				APPROVED FOR RELEASE STANDARDS MANAGER TOSH GRUCH				
							SHEET	1
CLASSIFICATION U							REVIEWER	MICHAEL LADACH
PROJECT ID							DATE	8/30/02
CHAPTER 7							DRAWING NO	ST-G4010-11
REVIEW							REV	0