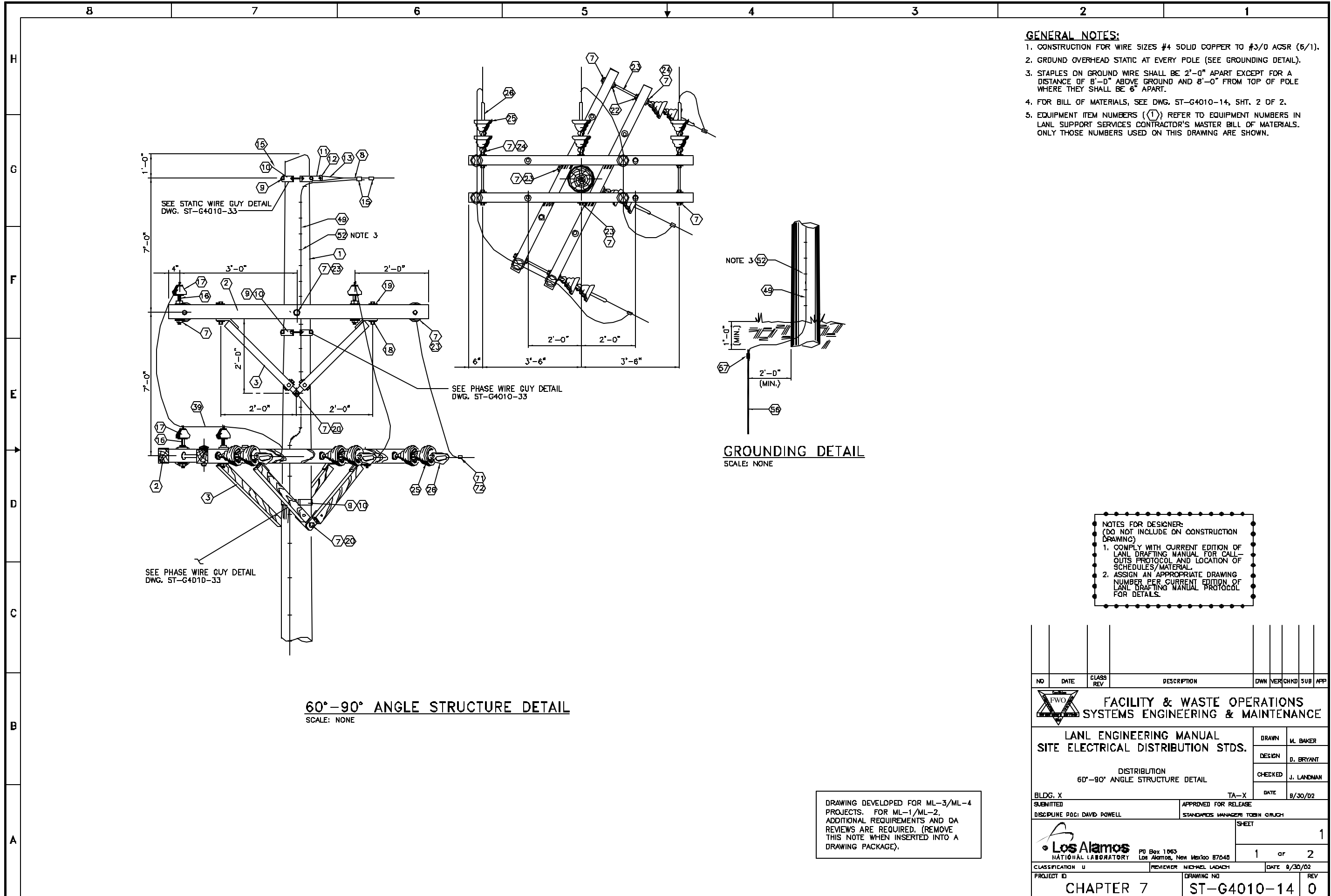
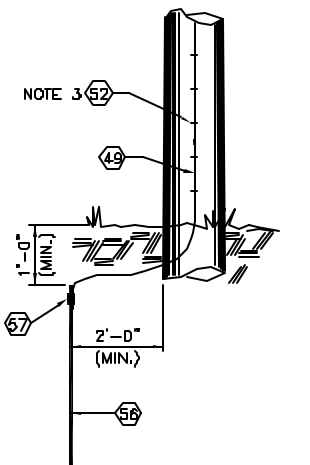


C:\LANL\Engineering\Standards\Eng. Manual [LEU]\2. Approved\ST-G4010-14E1.dwg, 11/04/02 11:20 003508B



60°-90° ANGLE STRUCTURE DETAIL
SCALE: NONE



GROUNDING DETAIL
SCALE: NONE

- GENERAL NOTES:**
1. CONSTRUCTION FOR WIRE SIZES #4 SOLID COPPER TO #3/0 ACGR (6/1).
 2. GROUND OVERHEAD STATIC AT EVERY POLE (SEE GROUNDING DETAIL).
 3. STAPLES ON GROUND WIRE SHALL BE 2'-0" APART EXCEPT FOR A DISTANCE OF 8'-0" ABOVE GROUND AND 8'-0" FROM TOP OF POLE WHERE THEY SHALL BE 6" APART.
 4. FOR BILL OF MATERIALS, SEE DWG. ST-G4010-14, SHT. 2 OF 2.
 5. EQUIPMENT ITEM NUMBERS ((1)) REFER TO EQUIPMENT NUMBERS IN LANL SUPPORT SERVICES CONTRACTOR'S MASTER BILL OF MATERIALS. ONLY THOSE NUMBERS USED ON THIS DRAWING ARE SHOWN.

- NOTES FOR DESIGNER:**
(DO NOT INCLUDE ON CONSTRUCTION DRAWING)
1. COMPLY WITH CURRENT EDITION OF LANL DRAFTING MANUAL FOR CALL-OUTS PROTOCOL AND LOCATION OF SCHEDULES/MATERIAL.
 2. ASSIGN AN APPROPRIATE DRAWING NUMBER PER CURRENT EDITION OF LANL DRAFTING MANUAL PROTOCOL FOR DETAILS.

DRAWING DEVELOPED FOR ML-3/ML-4 PROJECTS. FOR ML-1/ML-2, ADDITIONAL REQUIREMENTS AND QA REVIEWS ARE REQUIRED. (REMOVE THIS NOTE WHEN INSERTED INTO A DRAWING PACKAGE).

NO	DATE	CLASS REV	DESCRIPTION	OWN	VER	CHKD	SUB	APP	
FACILITY & WASTE OPERATIONS SYSTEMS ENGINEERING & MAINTENANCE									
LANL ENGINEERING MANUAL SITE ELECTRICAL DISTRIBUTION STDS.				DRAWN	M. BAKER				
DISTRIBUTION 60°-90° ANGLE STRUCTURE DETAIL				DESIGN	D. BRYANT				
BLDG. X SUBMITTED				CHECKED	J. LANDMAN				
TA-X				DATE	8/30/02				
DISCIPLINE POCI DAVID POWELL			APPROVED FOR RELEASE STANDARDS MANAGER TOSH GRUCH						
				SHEET 1					
CLASSIFICATION U				REVIEWER MICHAEL LADACH		DATE 8/30/02			
PROJECT ID CHAPTER 7				DRAWING NO ST-G4010-14		REV 0			