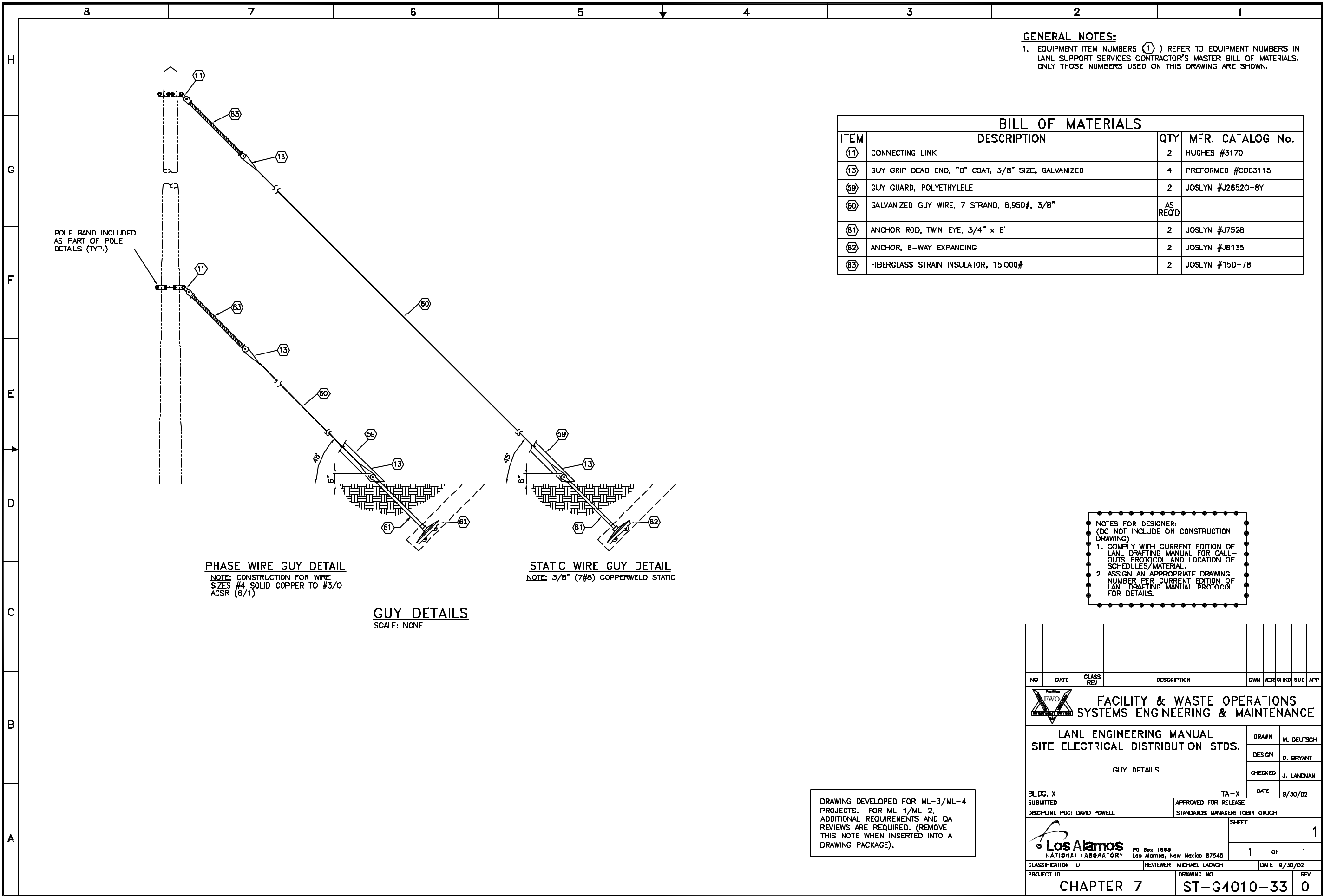


G:\LANL Engineering Standards\Eng. Manual [LEU]\2. Approved\ST-G4010-33E1.dwg, 11/09/02 ■ 02:43 05/09/02



GENERAL NOTES:
 1. EQUIPMENT ITEM NUMBERS () REFER TO EQUIPMENT NUMBERS IN LANL SUPPORT SERVICES CONTRACTOR'S MASTER BILL OF MATERIALS. ONLY THOSE NUMBERS USED ON THIS DRAWING ARE SHOWN.

BILL OF MATERIALS			
ITEM	DESCRIPTION	QTY	MFR. CATALOG No.
(11)	CONNECTING LINK	2	HUGHES #3170
(13)	GUY GRIP DEAD END, "B" COAT, 3/8" SIZE, GALVANIZED	4	PREFORMED #CDE3115
(59)	GUY GUARD, POLYETHYLENE	2	JOSLYN #J26520-8Y
(60)	GALVANIZED GUY WIRE, 7 STRAND, 6,950#, 3/8"	AS REQ'D	
(61)	ANCHOR ROD, TWIN EYE, 3/4" x 8'	2	JOSLYN #J7528
(62)	ANCHOR, 8-WAY EXPANDING	2	JOSLYN #JB135
(63)	FIBERGLASS STRAIN INSULATOR, 15,000#	2	JOSLYN #150-78

PHASE WIRE GUY DETAIL
 NOTE: CONSTRUCTION FOR WIRE SIZES #4 SOLID COPPER TO #3/0 ACSR (6/1)

STATIC WIRE GUY DETAIL
 NOTE: 3/8" (7#8) COPPERWELD STATIC

GUY DETAILS
 SCALE: NONE

NOTES FOR DESIGNER:
 (DO NOT INCLUDE ON CONSTRUCTION DRAWING)
 1. COMPLY WITH CURRENT EDITION OF LANL DRAFTING MANUAL FOR CALL-OUTS PROTOCOL AND LOCATION OF SCHEDULES/MATERIAL.
 2. ASSIGN AN APPROPRIATE DRAWING NUMBER PER CURRENT EDITION OF LANL DRAFTING MANUAL PROTOCOL FOR DETAILS.

DRAWING DEVELOPED FOR ML-3/ML-4 PROJECTS. FOR ML-1/ML-2, ADDITIONAL REQUIREMENTS AND QA REVIEWS ARE REQUIRED. (REMOVE THIS NOTE WHEN INSERTED INTO A DRAWING PACKAGE).

NO	DATE	CLASS REV	DESCRIPTION	OWN	VER	CHKD	SUB	APP
FACILITY & WASTE OPERATIONS SYSTEMS ENGINEERING & MAINTENANCE								
LANL ENGINEERING MANUAL SITE ELECTRICAL DISTRIBUTION STDS.				DRAWN M. DEUTSCH				
GUY DETAILS				DESIGN D. BRYANT				
				CHECKED J. LANDMAN				
				DATE 9/30/02				
BLDG. X		TA-X						
SUBMITTED DISCIPLINE POC: DAVID POWELL			APPROVED FOR RELEASE STANDARDS MANAGER TOBIN GRUCH					
				PO Box 1663 Los Alamos, New Mexico 87545		SHEET 1 of 1		
CLASSIFICATION U		REVIEWER MICHAEL LADACH		DATE 9/30/02				
PROJECT ID CHAPTER 7		DRAWING NO ST-G4010-33		REV 0				