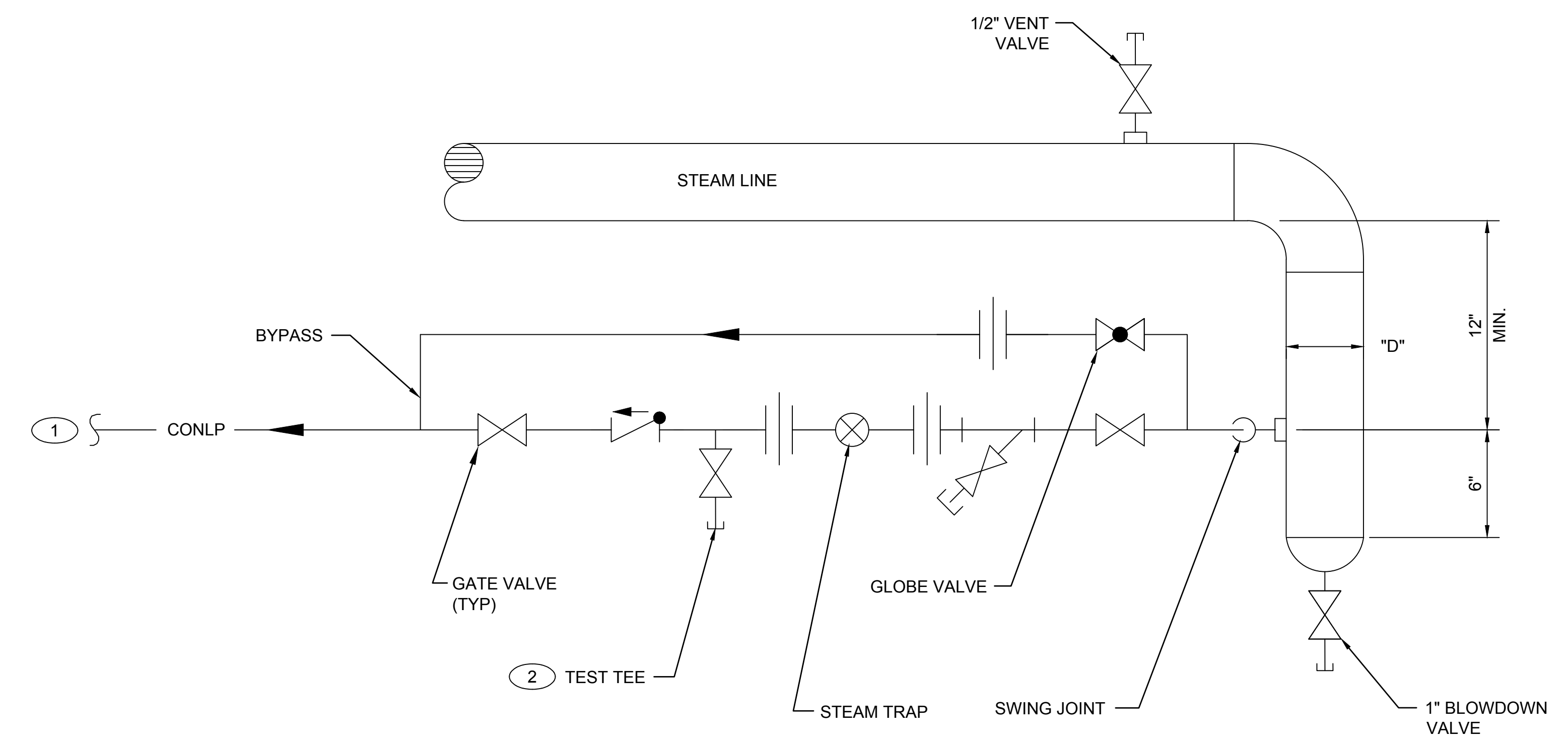


D
C
B
A

KEYED NOTES:

- ① CONNECT STEAM TRAP CONDENSATE BRANCH LINE INTO TOP OF CONDENSATE MAIN OR AT 45° ANGLE FROM TOP OF MAIN.
- ② PROVIDE 1/2" VALVE IN BOTTOM OF CONDENSATE LINE.

STEAM LINE SIZE	"D" (MIN)
UP TO 4"	LINE SIZE
6"	4"
8"	4"
10"	6"
12"	6"
14"	8"
16"	8"



DRAWING DEVELOPED FOR ML-3/ML-4 PROJECTS. FOR ML-1/ML-2, ADDITIONAL REQUIREMENTS AND QA REVIEWS ARE REQUIRED. (REMOVE THIS NOTE WHEN INSERTED INTO A DRAWING PACKAGE).

STEAM DRIP LEG DETAIL (End of Run)
SCALE: NONE

NOTES FOR DESIGNER: (DO NOT INCLUDE ON CONSTRUCTION DRAWINGS)

1. WHEN EDITING DETAIL TO SUIT PROJECT, ADD JOB SPECIFIC REQUIREMENTS AND DELETE ONLY THOSE PORTIONS THAT DO NOT APPLY. TO SEEK A VARIANCE FROM APPLICABLE REQUIREMENTS, CONTACT THE ESM MECHANICAL POC.
2. SIZE CONDENSATE BRANCH LINE NO SMALLER THAN THE TRAP INLET.
3. DRIP LEG PIPING SHALL BE DESIGNED/LOCATED TO BE READILY ACCESSIBLE FOR MAINTENANCE.

2	06-23-2017	UNCLASS	TO	ADMIN. CHANGES TO CAD STD. REV#5 FORMAT	JB	AJ	ML	ML	TO
1	08-13-2003	U	LB	REVISED TO COMPLY WITH DRAFTING MANUAL AND REVISED NOTES. DWG NO. WAS ST6203	RP	RF	JM	GG	TO
NO	DATE	CLASS REV	DC	DESCRIPTION	DWN	DSGN	CHKD	SUB	APP

ENGINEERING STANDARDS

MECHANICAL

**STEAM DRIP LEG DETAIL
END OF MAIN**

DRAWN	R. PEARSON
DESIGN	A. BRIDGE
CHECKED	G. GREWAL
DATE	06-28-99

TA- XX BLDG- XX

SUBMITTED DISCIPLINE POC: GURINDER GREWAL APPROVED FOR RELEASE STANDARDS MANAGER: TOBIN ORUCH

SHEET **2**

2 OF **2**

D.C.: U REVIEWER: LARRY BAYS DATE: 06-28-99

PROJECT ID: **CHAPTER 6** DRAWING NO: **ST-D3020-3** REV: **2**

00% REVIEW
NOT FOR CONSTRUCTION