

1

2

3

4

5

6

D

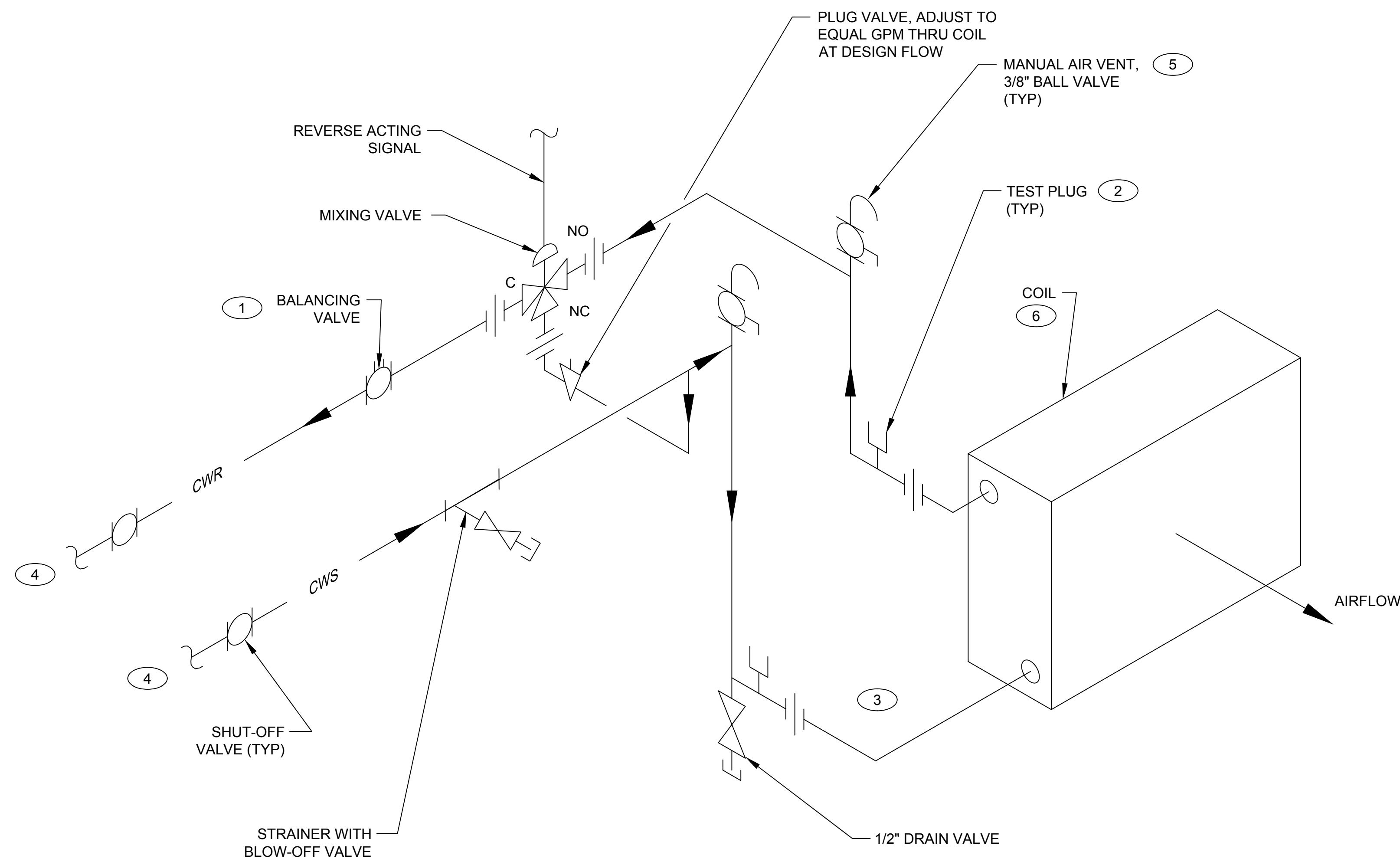
C

B

A

**KEYED NOTES:**

- ① INSTALL BALANCING VALVE WITH MINIMUM OF 3 STRAIGHT PIPE DIAMETERS UPSTREAM AND 1 STRAIGHT PIPE DIAMETER DOWNSTREAM.
- ② MAINTAIN 6" MINIMUM CLEARANCE ABOVE TEST PLUG TO ALLOW GAUGE TO BE INSERTED. DO NOT COVER PLUG WITH INSULATION.
- ③ INSTALL SWING JOINTS AT COIL CONNECTIONS.
- ④ CONNECT BRANCH LINES FROM COIL INTO TOP OR SIDE OF SUPPLY AND RETURN MAINS. CONNECTING INTO BOTTOM OF MAIN IS NOT ACCEPTABLE.
- ⑤ INSTALL MANUAL AIR VENTS IN SUPPLY AND RETURN COIL BRANCH PIPING AS FOLLOWS: A) IN PIPING HIGH POINT WHEN PIPING IS ABOVE MAIN. B) CLOSE TO COIL WHEN PIPING IS NOT ABOVE MAIN (SIDE CONNECTION).
- ⑥ INSTALL COIL SO AIR PASSES THROUGH FINS IN PROPER DIRECTION NOTED ON COIL.



DRAWING DEVELOPED FOR ML-3/ML-4 PROJECTS. FOR ML-1/ML-2, ADDITIONAL REQUIREMENTS AND QA REVIEWS ARE REQUIRED. (REMOVE THIS NOTE WHEN INSERTED INTO A DRAWING PACKAGE).

**CHILLED WATER COIL PIPING DETAIL** (VARIABLE FLOW THROUGH COIL, FAIL TO FULL COOLING)  
SCALE: NONE

**NOTES FOR DESIGNER:** (DO NOT INCLUDE ON CONSTRUCTION DRAWINGS)

- 1. SEE SHEET 9 FOR STACKED COIL PIPING & ADDITIONAL DESIGN NOTES.

NO	DATE	CLASS REV	DC	DESCRIPTION	DWN	DSGN	CHKD	SUB	APP
2	06-08-2017	UNCLASS	TO	ADMIN. CHANGES TO CAD STD. REV#5 FORMAT & SHEET # WAS 2 OF 11.	JB	AJ	ML	ML	TO
1	08-14-2003	U	LB	REVISED TO COMPLY WITH DRAFTING MANUAL. ADDED STRAINER & KEYED NOTE 6 & DWG NO. WAS ST6121.	RP	AB	JM	GG	TO

**ENGINEERING STANDARDS**

MECHANICAL		DRAWN	R. PEARSON
<b>CHILLED WATER COIL PIPING DETAIL</b>		DESIGN	A. BRIDGE
<b>VARIABLE FLOW, FAIL TO FULL COOLING</b>		CHECKED	G. GREWAL
TA- XX	BLDG XX	DATE	6-28-99
SUBMITTED DISCIPLINE POC: GURINDER GREWAL		APPROVED FOR RELEASE STANDARDS MANAGER: TOBIN ORUCH	
Los Alamos NATIONAL LABORATORY		P0 Box 1663 Los Alamos, New Mexico 87545	
D.C.: U		REVIEWER: LARRY BAYS	DATE: 6-28-99
PROJECT ID	DRAWING NO	REVISION	REV
<b>CHAPTER 6</b>	<b>ST-D30GEN-2</b>	<b>2</b>	<b>2</b>

00% REVIEW NOT FOR CONSTRUCTION