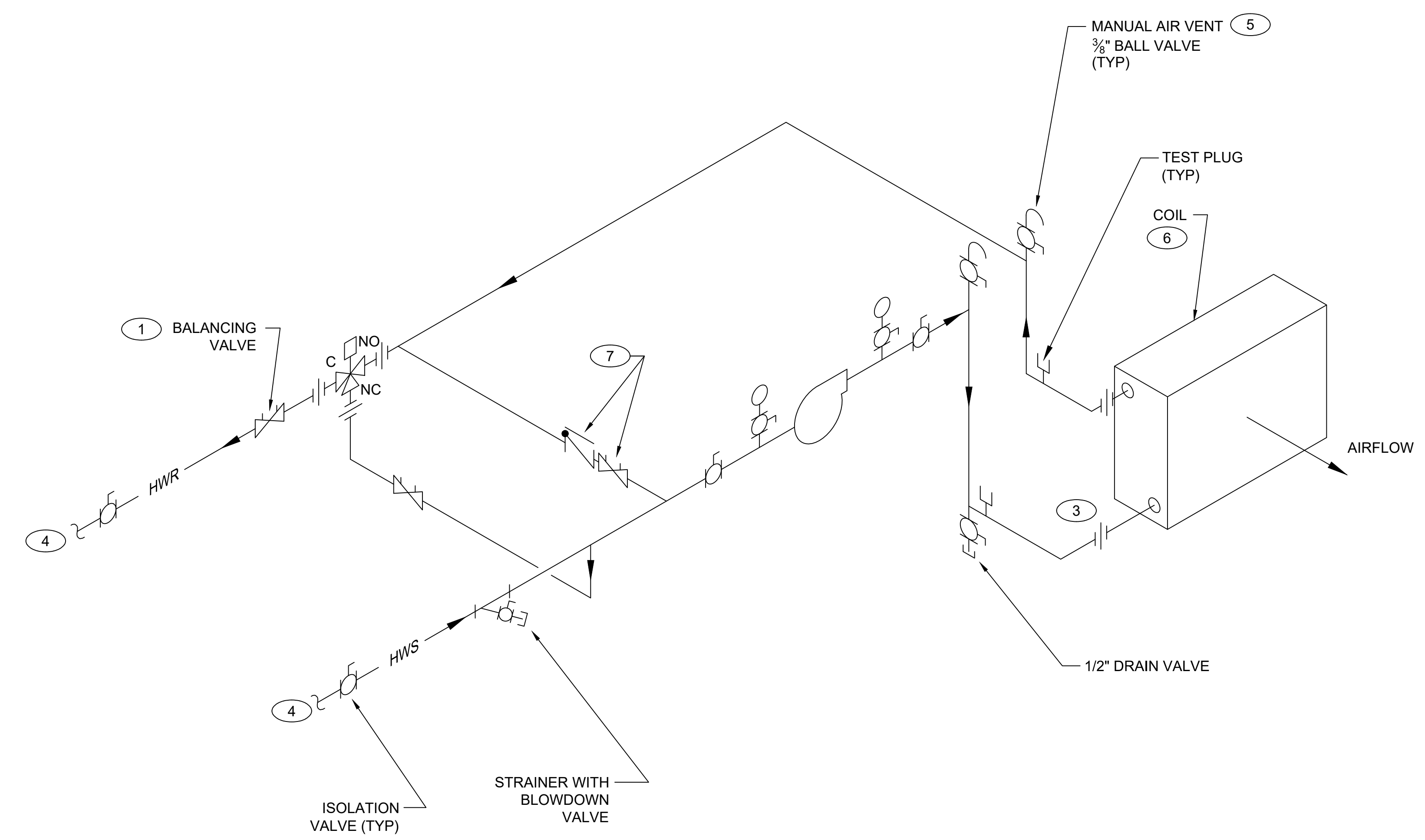


D
C
B
A



KEYED NOTES:

- ① INSTALL BALANCING VALVE WITH MINIMUM OF 3 STRAIGHT PIPE DIAMETERS UPSTREAM AND 1 STRAIGHT PIPE DIAMETER DOWNSTREAM.
- ② MAINTAIN 6" MINIMUM CLEARANCE ABOVE TEST PLUG TO ALLOW GAUGE TO BE INSERTED. DO NOT COVER PLUG WITH INSULATION.
- ③ INSTALL SWING JOINTS AT COIL CONNECTIONS.
- ④ CONNECT BRANCH LINES FROM COIL INTO TOP OR SIDE OF SUPPLY AND RETURN MAINS. CONNECTING INTO BOTTOM OF MAIN IS NOT ACCEPTABLE.
- ⑤ INSTALL MANUAL AIR VENTS IN SUPPLY AND RETURN COIL BRANCH PIPING AS FOLLOWS:
A) IN PIPING HIGH POINT WHEN PIPING IS ABOVE MAIN.
B) CLOSE TO COIL WHEN PIPING IS NOT ABOVE MAIN (SIDE CONNECTION).
- ⑥ INSTALL COIL SO AIR PASSES THROUGH FINS IN PROPER DIRECTION NOTED ON COIL.
- ⑦ CHECK VALVE AND BALANCING VALVE OR TRIPLE-DUTY VALVE.

DRAWING DEVELOPED FOR ML-3/ML-4 PROJECTS. FOR ML-1/ML-2, ADDITIONAL REQUIREMENTS AND QA REVIEWS ARE REQUIRED. (REMOVE THIS NOTE WHEN INSERTED INTO A DRAWING PACKAGE).

HYDRONIC PREHEAT COIL PIPING DETAIL (CONSTANT FLOW THROUGH COIL, FAIL TO FULL HEAT)
SCALE: NONE

NOTES FOR DESIGNER: (DO NOT INCLUDE ON CONSTRUCTION DRAWINGS)

- 1. SEE SHEET 9 FOR STACKED COIL PIPING.
- 2. REQUIRED WHEN CLOSE TEMPERATURE CONTROL IS REQUIRED, AND/OR FOR OUTSIDE AIR PREHEAT.

NO	DATE	CLASS REV	DC	DESCRIPTION	DWN	DSGN	CHKD	SUB	APP
3	4-8-19	UNCLASS		ADMIN. CHANGES TO CAD STD. REV 5 FORMAT AND SHEET NUMBER WAS 6 OF 11.		NJ	TS	ML	ML TO
2	12-17-03	U		REVISED TO PLACE BALANCING VALVES IN MORE EFFICIENT OPERATING POSITION	RP	AB	MB	CD	TO
1	8-14-03	U		REVISED TO COMPLY WITH DRAFTING MANUAL. ADDED STRAINER AND KEYED NOTE 6. DWG NO. WAS ST6121	RP	AB	JM	GG	TO

ENGINEERING STANDARDS

MECHANICAL		DRAWN	R. PEARSON
HYDRONIC PREHEAT COIL PIPING DETAIL CONSTANT FLOW, FAIL TO FULL HEAT		DESIGN	A. BRIDGE
		CHECKED	G. GREWAL
TA- XX		DATE	6-28-99
SUBMITTED DISCIPLINE POC: GURINDER GREWAL		APPROVED FOR RELEASE STANDARDS MANAGER: TOBIN ORUCH	
Los Alamos NATIONAL LABORATORY		SHEET 6	
PO Box 1663, Los Alamos, New Mexico 87545		6 OF 9	
D.C.: U	REVIEWER: LARRY BAYS	DATE:	
PROJECT ID	DRAWING NO	REV 3	
CHAPTER 6	ST-D30GEN-2		

00% REVIEW
NOT FOR CONSTRUCTION