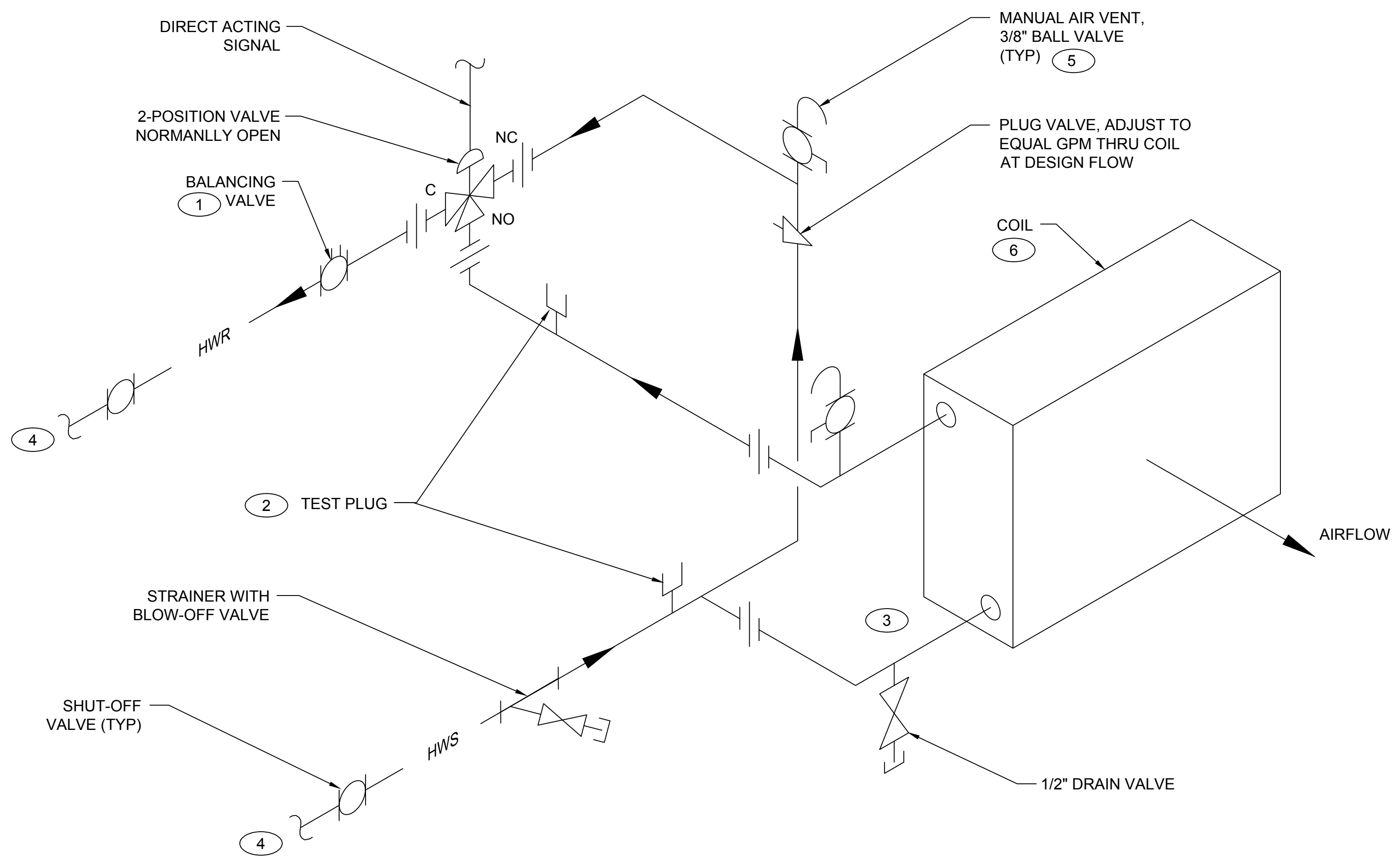


D
C
B
A



KEYED NOTES:

- ① INSTALL BALANCING VALVE WITH MINIMUM OF 3 STRAIGHT PIPE DIAMETERS UPSTREAM AND 1 STRAIGHT PIPE DIAMETER DOWNSTREAM.
- ② MAINTAIN 6" MINIMUM CLEARANCE ABOVE TEST PLUG TO ALLOW GAUGE TO BE INSERTED. DO NOT COVER PLUG WITH INSULATION.
- ③ INSTALL SWING JOINTS AT COIL CONNECTIONS.
- ④ CONNECT BRANCH LINES FROM COIL INTO TOP OR SIDE OF SUPPLY AND RETURN MAINS. CONNECTING INTO BOTTOM OF MAIN IS NOT ACCEPTABLE
- ⑤ INSTALL MANUAL AIR VENTS IN SUPPLY AND RETURN COIL BRANCH PIPING AS FOLLOWS:
A) IN PIPING HIGH POINT WHEN PIPING IS ABOVE MAIN.
B) CLOSE TO COIL WHEN PIPING IS NOT ABOVE MAIN (SIDE CONNECTION).
- ⑥ INSTALL COIL SO AIR PASSES THROUGH FINS IN PROPER DIRECTION NOTED ON COIL.

DRAWING DEVELOPED FOR ML-3/ ML-4 PROJECTS. FOR ML-1/ ML-2, ADDITIONAL REQUIREMENTS AND QA REVIEWS ARE REQUIRED. (REMOVE THIS NOTE WHEN INSERTED INTO A DRAWING PACKAGE).

HOT WATER COIL PIPING DETAIL (ON/OFF FLOW THROUGH COIL, FAIL TO FULL HEAT)
SCALE: NONE

NOTES FOR DESIGNER: (DO NOT INCLUDE ON CONSTRUCTION DRAWINGS)

- 1. SEE SHEET 10 FOR STACKED COIL PIPING & DESIGN NOTES.
- 2. SEE SHEET 11 FOR DESIGN NOTES.
- 3. APPLICATION: OUTSIDE AIR PREHEAT COIL (MODULATING FACE & BYPASS).

2	06-08-2017	UNCLASS	TO	ADMIN. CHANGES TO CAD STD. REV#5 FORMAT & SHEET NUMBER WAS 8 OF 11.	JB	AJ	ML	ML	TO
1	08-14-2003	U	LB	REVISED TO COMPLY WITH DRAFTING MANUEL. ADDED STRAINER & KEYED NOTE 6. REVISED CONTROL VALVE & DWG. NO. WAS ST6121.	RP	AB	JM	GG	TO
NO	DATE	CLASS REV	DC	DESCRIPTION	DWN	DSGN	CHKD	SUB	APP

ENGINEERING STANDARDS

MECHANICAL				DRAWN	R. PEARSON
HOT WATER COIL PIPING DETAIL ON/OFF FLOW, FAIL TO FULL HEAT				DESIGN	A. BRIDGE
				CHECKED	G. GREWAL
TA- XX BLDG XX				DATE	6-28-99
SUBMITTED DISCIPLINE POC: GURINDER GREWAL			APPROVED FOR RELEASE STANDARDS MANAGER: TOBIN ORUCH		
Los Alamos NATIONAL LABORATORY				SHEET 8	
P.O. Box 1663, Los Alamos, New Mexico 87545				8 OF 9	
D.C.: U		REVIEWER: LARRY BAYS		DATE: 6-28-99	
PROJECT ID		DRAWING NO		REV	
CHAPTER 6		ST-D30GEN-2		2	

00% REVIEW
NOT FOR CONSTRUCTION