

CONTENTS

1.0 SCOPE AND APPLICABILITY OF CHAPTER.....2

2.0 CHAPTER ORGANIZATION3

3.0 INTRODUCTION.....3

4.0 SECURITY AREAS4

5.0 SECURITY SIGNS6

6.0 LOCK AND KEY PROGRAM 11

7.0 LANL ORGANIZATIONS..... 12

8.0 CHAPTER ABBREVIATIONS 12

9.0 CHAPTER DEFINITIONS..... 13

10.0 CHAPTER REFERENCES 15

11.0 OTHER RESOURCES 16

12.0 RECORD OF REVISIONS 17

New in this revision (older revisions addressed in subsection 12.0, Record of Revisions)

Divided chapter into three Sections and requirement design/construction tables by security area as attachments to Section III. Changes based on DOE O 473.1A, general updates, org names, chapter organization, updated security area diagram, updated security signs, added project initiation instructions. Requirements numbered and bases captured in separate document.

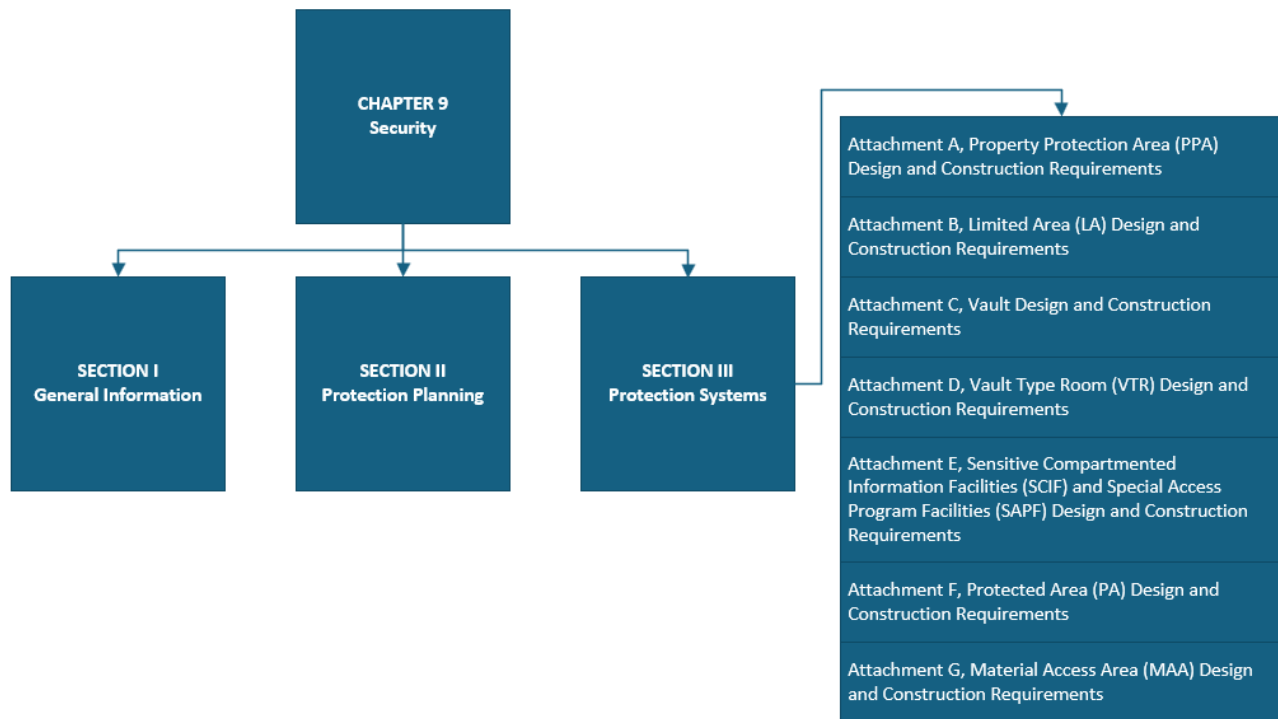
This mandatory functional series document is available online at <http://engstandards.lanl.gov>
 It derives from P342, Engineering Standards, which is issued under the Conduct of Engineering program at the Laboratory.

Please contact the [ESM Security POC](mailto:ESM_Security_POC) for interpretation, variance, and upkeep issues. Physical-security@lanl.gov is delivered to the SO-SS Physical Security Team.

SECTION I – GENERAL INFORMATION**1.0 SCOPE AND APPLICABILITY OF CHAPTER**

- A. This chapter establishes the security approach to be used in the planning and design of security measures for new, and modification of existing, LANL facilities.
- B. It provides requirements and guidance for selecting the appropriate level of physical protection measures, based on a graded approach for each new project as determined by DOE O 473.1A, *Physical Protection Program* and the vulnerability/security risk assessment conducted in accordance with the threat basis per DOE O 470.3C Chg 2, *Design Basis Threat (DBT) Order*.
- C. It establishes a system for evaluating and determining the level of required physical protection measures for each facility, and will guide the user, in coordination with the Security Division SMEs, in selecting and designing cost-effective security features adequate for protection from the established threat which are also efficient, convenient, maintainable, standardized, and adequate for future expansion.
- D. Use this chapter in conjunction with ESM Chapter 1 *General* and other interfacing ESM chapters (or Tailored Standards Manual/TSM if it is the applicable code of record). Also:
 - 1. For secure communications (classified network infrastructure—CNI, or Protected Transmission Systems—PTS), see ESM Chapter 18.
 - 2. For communications, see ESM Chapter 19 G50 *Site Communications* for work outside of buildings, and D60 *Communications* for work inside of buildings.
 - 3. For general design of security fences and gates, also see ESM Chapter 3 *Civil* Section G20.
- E. Usage notes:
 - 1. Guidance is indicated by section titling or italics (except where used to set off document titles).
 - 2. "Requirement (9-WXYZ)" appears throughout. A spreadsheet is available to LANL that provides the contractual, preferential, or other basis for the corresponding material.

2.0 CHAPTER ORGANIZATION

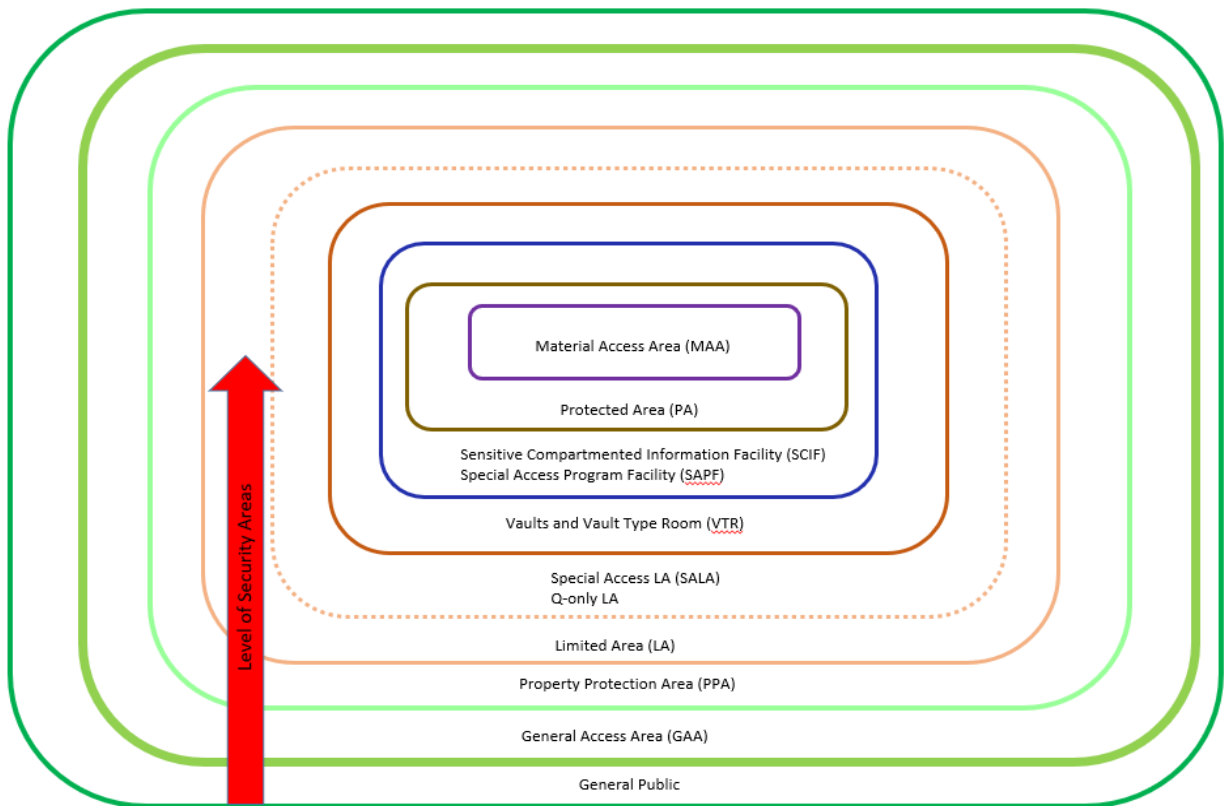


3.0 INTRODUCTION

- A. The term “security” as used throughout this chapter refers to both safeguards and security (S&S) as it is applicable to the project or facility regardless of the type of building or structure that contains a security interest as defined by the DOE Orders.
- B. Physical protection strategies are determined through the application of DOE O 470.3C Chg 2, *Design Basis Threat*; DOE O 470.4B Chg 3, *Safeguards and Security Program*; and other contractual, successor orders/policies for determining the level of protection required based on facility functions and potential security risks and graded approach defined by Section I subsection 4, *Security Areas*.
- C. Physical protection requirements are defined in DOE O 473.1A, *Physical Protection Program*. Its implementation is addressed by Section III, *Protection Systems Attachments A – G*.
- D. The objectives, guiding principles and core functions of Integrated Safeguards and Security Management (ISSM) are incorporated into this document. *ISSM is a formal, organized process used throughout the DOE complex for planning, performing, assessing, and improving the secure conduct of work in accordance with risk-based protection strategies.*
- E. The security related assets at LANL requiring protection under DOE Orders include, but are not limited to, Government property and facilities, special nuclear material (SNM), radiological materials, hazardous chemicals, biological agents, facilities, classified matter, controlled unclassified matter, federal employees, contractors, and the general public on Departmental property and government leased properties.

4.0 SECURITY AREAS

- A. LANL uses a layered access-control concept for security areas and a graded approach in designing physical protection systems that meet or exceed DOE requirements.
- B. Inspection programs are tailored for each type of security area, based on DOE requirements and mission need to prevent or manage the introduction or removal of specific items.
- C. LANL posts signs and notices at respective security areas, based on regulatory requirements and to meet mission needs. See Section I, subsection 5.0 *Security Signs* for additional details.
- D. Security areas are depicted in increasing rigor as follows¹, in relation to General Public area:



¹ Areas of highest rigor may be contained within those of lower rigor; however, all possible levels in between are not always present.

SECTION I - GENERAL INFORMATION

REV. 6, 05/06/2026

- E. Security areas are defined by DOE Order 473.1A and summarized below in order of increasing security.

DP-PO, Program Office, DP-PO-PA Planning and Analysis, SO-SS Security Systems and Physical Security must be involved in determining the security requirements to ensure compliance with DOE O 473.1A and the current DBT Policy. Additionally, see LANL Policy P202-1, *Security Areas and General Access Areas* for Upgrading and Downgrading Security Areas.

1. General Access Area (GAA)
 - a. GAAs designated by the ODSA to allow access to certain areas with minimum security requirements. GAAs are generally accessible to all personnel, including the public during normal business hours and locked outside of normal business hours.
 - b. The ODFSA must approve security requirements for GAA designated areas based on a risk management process.
 - c. Security requirements must be posted to inform all personnel, including the public, that entry into these areas subjects them to requirements. [Requirement 9-1001]
 - d. Where video surveillance is used in GAAs, signs must be posted to ensure the public is aware that they are under surveillance. [Requirement 9-1002]
2. Property Protection Area (PPA)
 - a. PPAs protect employees and government owned or leased, buildings, facilities and assets.
 - b. PPAs are configured to control public access and protect security interests and government-owned property and equipment against damage, destruction or theft. Section III, Attachment A, has detailed requirements.
 - c. PPAs have defined boundaries and access controls.
3. Limited Area (LA)
 - a. LAs are the minimum level security area designated for the protection of classified matter, Category III SNM, or departmental assets requiring limited access. Section III, Attachment B, has detailed requirements.
4. Special Access Limited Areas (SALAs) and Q-Only LAs
 - a. Special Access Limited Areas (SALAs) and Q-only LAs, such as CAS, SAS, secure communications centers, and automated information systems centers, are established according to the Laboratory mission or as designated by the RLM per P202-1, *Security Areas and General Access Areas*.
5. Vault and Vault Type Room (VTR)
 - a. Vaults and VTRs are established for the protection of classified matter and DOE assets requiring limited access and security in depth. Section III Attachments C and D have detailed requirements.
 - b. Physical security requirements are based on the classification, value, or sensitivity of the assets to be protected.

SECTION I - GENERAL INFORMATION

REV. 6, 05/06/2026

6. Sensitive Compartmented Information Facilities (SCIF)
 - a. A SCIF is an area, room, group of rooms, or installation where SCI is stored, used, discussed, and processed. Section III, Attachment E, has detailed requirements.
7. Special Access Program Facilities (SAPF)
 - a. A SAPF is an area, room, or group of rooms, or installation where SAP-level information is stored, used, discussed, and processed. SAP is a program established for a specific class of classified information that imposes safeguarding and access requirements that exceed those normally required for information at the same classification level. Section III, Attachment E, has detailed requirements.
8. Protected Area (PA)
 - a. PAs are security areas that are established to protect Category II or greater quantities of SNM, classified matter and/or to provide a concentric security zone surrounding an MAA. Section III, Attachment F has detailed requirements.
 - b. Privately-owned vehicles are prohibited in a PA unless specifically authorized in writing per P202-1, *Security Areas and General Access Areas*.
9. Material Access Area (MAA)
 - a. MAAs are security areas that are established to protect Category I SNM and Category II SNM with credible rollup to Category I. Section III, Attachment G has detailed requirements.
 - b. MAAs have specifically defined physical barriers, are located within a PA, and are subject to specific access controls.
 - c. Vehicles (including government-owned/rented/leased, vendor, private, and emergency) are not allowed in the MAA.

5.0 SECURITY SIGNS



GUIDANCE: All these signs are LANL-furnished

- A. DOE real property must have signs posted according to statutes, regulations, and the administrative requirements for posting as stated in DOE O 473.1A, *Physical Protection Program*. [Requirement 9-1003].
 1. No Trespassing [Requirement 9-1004]
 2. Prohibited Articles [Requirement 9-1005]
 3. Controlled Articles [Requirement 9-1006]
 4. Atomic Weapons and Special Materials Rewards Act [Requirement 9-1007]
 5. Use of Deadly Force [Requirement 9-1008]
 6. Video Surveillance [Requirement 9-1009]
- B. Placement of signs on fences must not interfere with the function of the fence-mounted IDS. If the signage could interfere with the IDS or video assessment and surveillance system (VASS), mount on posts outside the fenced area. [Requirement 9-1010]

SECTION I - GENERAL INFORMATION

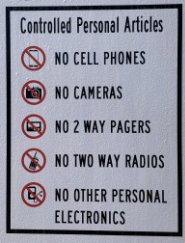
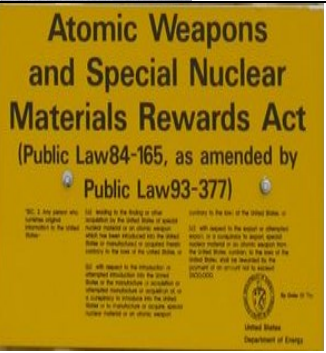

REV. 6, 05/06/2026

- C. The signage must be mounted to establish demarcation of boundaries and must be easily discernable to provide reasonable assurance of notice to persons about to enter, and documented in the approved SP. [Requirement 9-1011]
- D. The following signs are posted and controlled by SO-SS Physical Security, physical-security@lanl.gov. Consult with SO-SS Physical Security, physical-security@lanl.gov before posting or removing from designates security areas or buildings.
 - 1. No Trespassing
 - 2. Prohibited Articles
 - 3. Controlled Articles
 - 4. Atomic Weapons and Special Materials Rewards Act
 - 5. Use of Deadly Force
 - 6. Video Surveillance
 - a. See Paragraph E below for additional video surveillance sign posting requirements.

Image	Message	Minimum Size and Color	Material	Posting Location
 <p>A yellow sign with black text and a red border. The top line reads "No Trespassing" in large, bold letters. Below it, in smaller text, it says "By Order Of The United States Department Of Energy". The sign contains several paragraphs of text regarding trespassing regulations and prohibited items.</p>	<p>No Trespassing By Order of the United States Department of Energy Whoever willfully violates these regulations shall, upon conviction, be punishable by a fine of not more than \$5,000. Whoever willfully violates these regulations with respect to any facility, installation, or real property enclosed by a fence, wall floor, roof, or other structure barrier, shall be guilty of a misdemeanor and, upon conviction, shall be punished by a fine not to exceed \$100,000 or imprisonment for not more than 1 year, or both. (Title 42, United States Code section 2278(a); Title 18, United States Code section 3571). By authority of section 229 of the Atomic Energy Act of 1954, as amended (Title 42, United States Code section 2278(a)). The unauthorized entry upon any facility, installation, or real property subject to the jurisdiction, administration, or in the custody of the Department of Energy, which has been designated as subject to the provisions contained in the Title 10 Code of Federal regulation, Part 860, is prohibited. The unauthorized carrying, transporting, or otherwise introducing or causing to be introduced, any dangerous weapon, explosive, or other dangerous instrument or material likely to produce substantial injury or damage to persons or property, into or upon such facility, installation, or real property is likewise prohibited. United States Code, 2278(a) and Title 10, Code of Federal Regulation, Part 860 of the rules and regulations of the Department of Energy, this facility, installation, or real property has been designated as subject to these regulations by the United States Department of Energy. Trespassers may be subject to the provisions stated above. Prohibited Articles Prior Authorization is Needed for Admitting: Dangerous Weapons Explosives Other dangerous instrument or material likely to produce substantial injury or damage to persons or property (Title 10 Code of Federal Regulations S 860.4) By Order of the United States Department of Energy Packages, vehicles, and hand-carried items may be inspected to assure compliance.</p>	<p>10.5 IN x 13.5 IN White or Yellow background and black lettering</p>	<p>Posted Outside: 18-gauge sheet metal</p>	<p>PPA LA</p>
 <p>A white sign with a red border and red text. The top line reads "PROHIBITED ARTICLES" in bold. Below it, it says "Prior Authorization is Needed for Admitting:". There is a list of prohibited items with red arrowheads: "Dangerous Weapons", "Explosives", and "Other dangerous instrument or material likely to produce substantial injury or damage to persons or property (Title 10 Code of Federal Regulations S 860.4)". At the bottom, it says "By Order of the United States Department of Energy" and "Packages, vehicles, and hand-carried items may be inspected to assure compliance."</p>	<p>Prohibited Articles Prior Authorization is Needed for Admitting: <ul style="list-style-type: none"> ➤ Dangerous Weapons ➤ Explosives ➤ Other dangerous instrument or material likely to produce substantial injury or damage to persons or property (Title 10 Code of Federal Regulations S 860.4) By Order of the United States Department of Energy Packages, vehicles, and hand-carried items may be inspected to assure compliance.</p>	<p>10.5 IN x 13.5 IN White or Yellow background and black lettering (LANL uses red lettering)</p>	<p>Posted Outside: 18-gauge sheet metal Posted Inside: Laminated or Foam Board</p>	<p>PPA LA</p>


SECTION I - GENERAL INFORMATION

REV. 6, 05/06/2026

 <p>Controlled Personal Articles NO CELL PHONES NO CAMERAS NO 2 WAY PAGERS NO TWO WAY RADIOS NO OTHER PERSONAL ELECTRONICS</p>	<p>Controlled Personal Articles No Cell Phones No Cameras No 2 Way Pagers No Two Way Radios No Other Personal Electronics</p>	<p>Minimum size and color not stated in DOE Orders. LANL size: 10 IN x 14 IN</p>	<p>Adhesive label</p>	<p>LA</p>
 <p>Atomic Weapons and Special Nuclear Materials Rewards Act (Public Law 84-165, as amended by Public Law 93-377)</p>	<p>Atomic Weapons and Special Nuclear Materials Rewards Act (Public Law 84-165, as amended by Public Law 93-377) "SEC. 2. Any person who furnishes original information to the United States – (a) leading to the finding or other acquisition by the United States of special nuclear material or an atomic weapon which has been introduced into the United States or manufactured or acquired therein contrary to the laws of the United States, or (b) with respect to the introduction or attempted introduction into the United States or the manufacture or acquisition or attempted manufacture or acquisition of, or a conspiracy to introduce into the United States or to manufacture or acquire, special nuclear material or an atomic weapon contrary to the laws of the United States, or (c) with respect to the export or attempted export, or a conspiracy to export, special nuclear material or an atomic weapon from the United States, shall be rewarded by the payment of an amount not to exceed \$500,000. By Order of the United States Department of Energy.</p>	<p>14 IN x 20 IN Yellow background and black lettering</p>	<p>Posted Outside: 18-gauge sheet metal Posted Inside: Laminated or Foam Board</p>	<p>LA</p>
 <p>Los Alamos NNSA WARNING!! DO NOT ENTER!! (WITHOUT AUTHORIZATION) USE OF DEADLY FORCE AUTHORIZED Atomic Energy Act OF 1954 (as amended 42 USC 2201K, section 161.k. and 10CFR1047.7)</p>	<p>WARNING!!! DO NOT ENTER!! (WITHOUT AUTHORIZATION) USE OF DEADLY FORCE AUTHORIZED Atomic Energy Act OF 1954 (As amended 42 USC 2201K), section 161.k. and 10CFR1047.7</p>	<p>Minimum size not stated in DOE Orders. LANL size: 11 IN x 14 IN White background with red lettering for the words "WARNING USE OF DEADLY FORCE AUTHORIZED" and be clearly legible and commensurate with the size of the sign. The remaining words in black lettering.</p>	<p>Posted Outside: 18-gauge sheet metal Posted Inside: Laminated or Foam Board</p>	<p>See Section III Attachment F Subsection 16, <i>Security Signs</i></p>

SECTION I - GENERAL INFORMATION

REV. 6, 05/06/2026

	<p>NOTICE THIS AREA IS UNDER VIDEO SURVEILLANCE</p>	<p>Minimum size and color not provided in DOE Orders.</p> <p>LANL size: 11 IN x 14 IN</p> <p>LANL color: White background with white lettering for the word "NOTICE" and remaining words in black lettering.</p>	<p>Posted Outside: 18-gauge sheet metal</p> <p>Posted Inside: Laminated or Foam Board</p>	<p>See Section I, Subsection 5.0, E, <i>Video Surveillance Signs</i></p>
---	---	--	---	--

- E. Video Surveillance Signs
 - 1. Where used in GAAs, signs must be posted to ensure the public is aware they are under surveillance. [Requirement 9-1012]
 - 2. Where used in Limited areas as documented in the approved SP. [Requirement 9-1013]
 - 3. Video Surveillance Systems designed and installed through IDS-TS, Infrastructure Services Division – Telecommunications Services, Video Surveillance Systems, videoSurveillance@lanl.gov.
- F. LANL Administrative signs.
 - 1. LANL has developed a series of administrative signs to be used in designated security areas based on the security interest to be protected, security clearance level and access controls. Consult with SO-SS Physical Security, physical-security@lanl.gov before posting or removing from designates security areas or buildings.
 - 2. The LANL administrative signs are as follows and illustrations are located at <https://int.lanl.gov/org/ddops/alddp/security-operations/security-systems/security-areas.shtml>.
 - a. Limited Area / Q Only
 - b. Limited Area / Q or L
 - c. Material Access Area / Q
 - d. Property Protection Area / U
 - e. Protected Area / Q or L
 - f. L-cleared Person in Area
 - g. Attention Uncleared Person(s) in Area
 - h. L-cleared Visitor in Area
 - i. Mobile Devices Prohibited
 - j. No Piggybacking

6.0 LOCK AND KEY PROGRAM

- A. The LANL Lock & Key Program provides programmatic oversight in accordance with DOE O 473.1A, *Physical Protection Program*. The Program ensures proper protection of S&S assets.
 - 1. Non-security locks and keys are not addressed in DOE O 473.1A.
- B. Security lock and key categories are based on the type of assets being protected and the level of controls associated with locks and keys.
- C. Non-security locks and keys that are LANL-administrative in nature generally used to protect property and CUI are managed by the Lock & Key Program (i.e., keys under direct control of worker).
- D. Non-security locks and keys that are non-LANL-administrative in nature are not managed by the Lock & Key Program (e.g., desk, cabinet, vehicle).
- E. For additional guidance on security locks and keys, contact SO-SS Lock & Key Program, lockandkeyprogram@lanl.gov and refer to P202-4, *Security Locks and Keys*.

7.0 LANL ORGANIZATIONS

Org	Organization Name	Group E-mail (if applicable)
DP-PO	Defense Protection – Program Office	alddp-project-po@lanl.gov
DP-PO-PA	Defense Protection – Program Office – Planning and Analysis	va-team@lanl.gov
SO-SS	Security Operations - Security Systems - Physical Security - Lock & Key Program	physical-security@lanl.gov Lockandkeyprogram@lanl.gov
ISD-TS	Infrastructure Services Division – Telecommunications Services	

8.0 CHAPTER ABBREVIATIONS

See [GLOS-COE-1](#), *Conduct of Engineering Glossary* for additional abbreviations. The DOE EHSS S & S Policy Information Resource page with additional acronyms and terms is [here](#).

ACS	Access Control System
AFP	Argus field panel
AVCO	Activation Validation and Cutover
BMS	Balanced magnetic switch
CAS	Central Alarm Station
DBT	Design Basis Threat
DCF	Design Change Form
DOE	Department of energy
EOR	Engineer of Record
ESB	Enterprise Standard Booth
ESM	Engineering Standards Manual
GAA	General Access Area
GFE	Government Furnished Equipment
GSA	General Service Administration
HGU	Hand Geometry Units
HVAC	Heating, Ventilation, and Air Conditioning
IDS	Intrusion Detection System
LA	Limited Area
LANL	Los Alamos National Laboratory
LFP	LANL Field Panel
MAA	Material Access Area
NNSA	National Nuclear Security Administration
ODFSA	Officially Designated Federal Security Authority
ODSA	Officially Designated Security Authority
PA	Protected Area
PAR	Project and Activity Review
PACS	Physical Access Control System

PF	Proforce
PIDADS	Perimeter Identification Detection Assessment and Delay System
PIDAS	Perimeter Identification Detection and Assessment System
PIN	Personal Identification Number
PIV	Personal Identity Verification
PL	Protection Level
POC	Point of Contact
PPA	Property Protection Area
RAP	Remote Access Panel
RFI	Request for Information
S&S	Safeguards & Security
SALA	Special Access Limited Area
SAPF	Special Access Program Facilities
SAS	Secondary Alarm Station
SAT	Site Acceptance Test
SCIF	Sensitive Compartmented Information Facilities
SME	Subject Matter Expert
SNM	Special Nuclear Material
SP	Security Plan
SRA	Security Risk Assessment
SSP	Site Security Plan
STC	Sound Transmission Class
TSCM	Technical Surveillance Countermeasures
UPS	Uninterruptible Power Supply
VA	Vulnerability Assessment
VAR	Vulnerability Analysis Report
VAS	Vehicle Access System
VASS	Video Assessment and Surveillance System
VBIED	Vehicle Borne Improvised Explosive Device
V/VTR	Vault/Vault-Type Room

9.0 CHAPTER DEFINITIONS

See [GLOS-COE-1](#), *Conduct of Engineering Glossary* for additional definitions (and the CoE-official ones, where these may differ). The DOE EHSS S & S Policy Information Resource page with additional acronyms and terms is [here](#).

Anti-Passback	An access control feature which prevents authorized users from accessing an area and subsequently passing their credential to a second person to gain access.
Argus Field Panel (AFP)	LANL's security field gathering panel in an Intrusion Detection/Access Control system
Balanced Magnetic Switch (BMS)	A magnetically operated switch using a balanced magnetic field, designed to detect the opening of a secured door, window, or other point of entry. In addition, it

	detects attempts to defeat the switch by substituting a magnetic field and may have provisions for internal adjustments and detection of switch tampering attempts.
Category I, II, III and IV	A designation of the significance of nuclear material based on the material types, the material forms, and the amount of material. Categories for amounts of SNM, with Category I being the highest.
Central Alarm System (CAS)	A continuously staffed centralized location from which a facility's IDS(s) and other security activities are monitored.
Complex	The centralized equipment of an ACS or AACS, normally mounted on the wall of an equipment room.
Controlled Articles	Technology, equipment, electronic devices that are restricted due to security concerns or regulatory laws. Refer to LANL Policy P217, <i>Controlled Portable Electronic Devices</i> for the most current listing of controlled articles on LANL property.
Enterprise Standard Booth (ESB)	Single lane interlocking access control booth, for high security environments, used to deny access to unauthorized personnel, from and exit and an entry door. Neither of which can be unlocked at the same time.
Host System	In the context of the Argus Security System refers to the central, software-driven management platform that acts as the command-and-control unit for the sensors.
Intrusion Detection System (IDS)	A physical security system consisting of sensors capable of detecting one or more types of phenomena, signal media, annunciators, energy sources, alarm assessment systems, and alarm reporting elements including alarm communications and information display equipment.
LANL Field Panel (LFP)	A type of controller in an Intrusion Detection/Access Control subsystem that is sometimes installed but is being phased out in favor of Argus (and AFPs)
Project and Activity Review (PAR)	A work planning and execution tool that facilitates communication among project and activity personnel, subject matter experts (SMEs), and facility operations.
Physical Access Control System (PACS)	An electronic system that controls the ability of people to enter an area by means of authentication and authorization at access control points. (NIST Special Publication (SP)800-116. Rev. 1, Appendix G).
Perimeter Intrusion Detection and Assessment System (PIDAS)	A mutually supporting combination of barriers, clear zones, lighting, and electronic intrusion detection, assessment, and access control systems constituting the perimeter of the protected area and designed to detect, impede, control, or deny access to the protected area.
Personal Identity Verification (PIV) Credential	The HSPD-12 compliant credential is a physical identity card/smart card issued to Federal employees and contractors that contains authentication mechanisms that are used to verify the claimed identity of the cardholder. Often referred to a "badge".
Prohibited Articles	Any item, material, or substance forbidden from being brought into a specific area, facility, by law, regulation, or security policy. Refer to LANL Policy P202-5, <i>Prohibited Articles</i> for the most current listing of prohibited articles on LANL property.
Protection Level (PL)	A graded protection approach which categorizes Department assets into levels or categories based on consequence of loss. Protection levels are defined for specific assets. Since Departmental facilities have multiple asset categories, sites will have multiple protection levels.
Remote Access Panel (RAP)	Badge reader that requires a badge swipe and entering a security or PIN code for authentication.

Secondary Alarm Station (SAS)	A continuously staffed location, physically separated from the Central Alarm Station, with the capability to provide alarm annunciation and response as a back-up to the Central Alarm Station, so that a single act cannot remove the capability of calling for assistance or otherwise responding to an alarm.
Security Area	A defined area containing safeguards and security interests that requires physical protection measures.
Security Plan (SP)	An official document that describes the methodologies, implementation, and the use of resources by a facility to protect the facility, its sites, and its assets.
Security Risk Assessment (SRA)	An evaluation of potential threats against a safeguards and security interest and the development of potential countermeasures to address vulnerabilities. It also provides the decision-maker with a firm foundation on which to make informed decisions regarding the effectiveness of a safeguards and security system.
Site Security Plan (SSP)	The site security plan (SSP) is a risk management document that provides summary information used to describe existing security programs and vulnerability and risk assessments at LANL. This SSP also describes the existing condition of site protection programs.
Three-Factor Authentication	Authenticating something you have, and something you know, and something you are. In the context of this chapter, the PIV is something you have, something you know is a PIN, and something you are is biometric authentication.
Two-Factor Authentication	Authenticating something you have, and something you know or something you are. In the context of this chapter the PIV is something you have; something you know is a PIN and something you are is biometric authentication.
Video Assessment and Surveillance System (VASS)	Video systems used in the assessments used in the assessment of intrusion detection alarms and for the remote surveillance of DOE assets.

10.0 CHAPTER REFERENCES

- A. Department of Energy (DOE) Orders
 - 1. DOE O 470.3C, Change 2, Attachment 1 CRD, *Design Basis Threat (DBT) Order*
 - 2. DOE O 470.4C, Attachment 1 CRD and Attachment 2 CRD, *Safeguards and Security Planning*
 - 3. DOE O 413.3B, CHANGE 7 (LtdChg), *Program and Project Management for the Acquisition of Capital Assets*
 - 4. DOE O 470.6, *Technical Security Program*
 - 5. DOE O 471.5, current version, *Special Access Programs*
 - 6. DOE O 471.6, current version, *Information Security*
 - 7. DOE O 473.1A, Attachment 1 CRD, *Physical Protection Program*

NOTE: The DOE EHSS S & S Policy Information Resource page [here](#) includes DOE and national requirements, drivers, and reference documents.
- B. LANL Master Specifications and Policy (Procedures, System Descriptions)
 - 1. 26 0533, *Raceways and Boxes for Electrical Systems*
 - 2. 28 1321, *Administrative Access Control System Rough-In*

SECTION I - GENERAL INFORMATION

REV. 6, 05/06/2026

3. 28 0528, *Pathways for Electronic Security*
 4. 33 8126, *Communication Underground Ducts, Manholes and Handholes*
 5. P202-1, Revision 13, *Security Areas and General Access Areas*
 6. P202-2, Revision 8, *Vaults and Vault-Type Rooms*
 7. SD200, Revision 5, Administrative Change 3, *Integrated Safeguards and Security Management*
 8. SD350, Revision 13, *Project Management for Capital Asset Acquisition and Construction* (and RN350-02, [FY26 Revisions to SD350, Project Management for Capital Asset Acquisition and Construction](#))
- C. Miscellaneous References
1. NNSA SD 470.4-2, *Implementation Instructions*
 2. FED-STD-832, *Construction Methods and Materials for Vaults*
 3. Intelligence Community Standard (ICS) ICD/ICS 705, current version, *Technical Specifications for Construction and Management of Sensitive Compartmented Information*
 4. National Fire Protection Association (NFPA) Life Safety Code 101
 5. UL 752, current version, *Standard for Bullet Resisting Equipment*
 6. UL634, current version, *Connectors and Switches for Use with Burglar-Alarm Systems*
 7. Section 229 of the Atomic Energy Act of 1954 as amended (42 U.S.C. § 2278a), as implemented by 10 CFR Part 860.
 8. Section 662 of the DOE Organization Act (42 U.S.C. § 7270b), as implemented by 10 CFR Part 1048.
 9. The Federal Property and Administrative Services Act of 1949 (P. L. 152, Ch. 288, 63 Stat. 377, as amended).
 10. 41 CFR Part 102-74, Subpart C governing entry to public buildings and grounds under the charge and control of the General Services Administration (GSA).

11.0 OTHER RESOURCES

- A. P202-4, Revision 8, *Security Locks and Keys*
- B. P202-5, Revision 5, Administrative Change 2, *Prohibited Articles*
- C. P217, Revision 13, Administrative Change 3, *Controlled Portable Electronic Devices*
- D. DOE G 413.3-3A, Change 1, *Safeguards and Security for Program and Project Management*

12.0 RECORD OF REVISIONS

Rev	Date	Description	POC	Resp. Mgr.
0	5/17/06	Initial issue. Supersedes similar material in Ch 7 Sections D5030 and G4030 on PTS and PSS.	Robert Gonzales, <i>S-1</i>	Mitch Harris, <i>ENG-DO</i>
1	10/27/06	Admin changes only. Org and contract reference updates from LANS transition. IMP and ISD number changes based on new CoE IMP 341. Master Spec number/title updates, other admin changes.	Robert Gonzales, <i>SEC-PPS1</i>	Kirk Christensen, <i>CENG</i>
1 Chg. 1	04/02/07	Standard Details references and links corrected to latest (2004/2005) documents.	Robert Gonzales, <i>SEC-PPS1</i>	Kirk Christensen, <i>CENG</i>
2	1/26/11	Admin change that moved secure communications to new Chapter 18; reference and org updates; renumbered Section to FP&S.	Robert Gonzales, <i>SS-1</i>	Larry Goen, <i>CENG</i>
3	4/30/15	Major revision to implement new orders, primarily DOE O 473.3A, and organize into Apps. Added DoD UFC manuals for planning and design of systems, V/VTR table, and AACS requirements from ESM Ch 19. Resolved issues from internal and field office assessments.	Robert Gonzales, <i>PS-1</i>	Larry Goen, <i>ES-DO</i>
4	1/8/18	Minor revision to add temporary fencing in App D, clarify SCIF/SAPF App. E, and revise App. F IIDS/AACS to include Apollo from Ch 19. Updated orgs, orders, and other references throughout.	Jeff Mccale, <i>SEC-PSS</i>	Larry Goen, <i>ES-DO</i>
5	11/04/22	Incorporated VAR-10381 , <i>Vault Door and X-ray Machine Purchase Approvals</i> . Reduced signs listing. Minor change to VTR and SAPF construction (latter moved to new App I) and SAPF and SCIF intrusion detection (App F). Updated organization and Federal references, other minor changes throughout.	Jeff Mccale <i>SEC-PPO</i>	Michael Richardson, <i>ES-DO</i>
5.1	1/23/25	Updated OUO markings to CUI//PHYS as an admin change.	Jeff Mccale <i>SO-PPO</i>	Michael Richardson, <i>ES-DO</i>
6	05/06/26	Divided chapter into three Sections and requirement design/construction tables by security area as attachments to Section III. Changes based on DOE O 473.1A, general updates, org names, chapter organization, updated security area diagram, updated security signs, added project initiation instructions. Requirements numbered and bases captured in separate document.	Tina Vigil, <i>SO-SS</i>	Michael Richardson, <i>ES-DO</i>